



沉著 · 前進

Keep
Calm
and
Carry
On



04	使命與核心價值 Mission and Core Values		
05	社會效益亮點 Social Impact Highlight		
06	機構組織架構 Organizational Chart		
07	職員團隊 Staff Team		
09	主席序言 Foreword by the Chairman		
11	行政報告 Executive Report	24	企業成就 Corporate Achievements
14	業務版圖 Business Presense	25	員工參與及成就 Employee Participation & Achievements
16	業務發展 Business Development	28	財務回報 2014-2015 Financial Return
	▶ 「卓思廊」便利店 "Cheers Gallery" Convenience Store	29	審計報告 2014-2015 Auditor's Report
	▶ 「卓思廊」復康用品專賣店 "Cheers Gallery" Rehab Shop	33	鳴謝 Acknowledgement
	▶ 「復康速遞」直銷業務 "Rehab Express" Direct Sales Service	36	聯絡我們 Contact Us
	◆ 「復康速遞」網上商店 "Rehab Express" Online Shop		
	◆ 《復康速遞》雜誌 "Rehab Express" Magazine		
			▶ 「卓思」市場推廣服務 "Cheers" Marketing and Promotion Service
			▶ 機構消費計劃 Organization Consumption Scheme
			◆ 悅購網 Cheers Point Net
			◆ 悅購點 Cheers Point
			▶ 餐飲業務 Catering Service



使命與核心價值

Mission and Core Values



使命

聯繫四方商機，導向光輝前路

作為香港具規模的「社會企業」，我們積極結合官、商、民三方面的資源，以「市場導向」和「顧客導向」為營運基礎；

- 聯繫各方商機，為殘疾人士及弱勢社群創造就業機會；
- 經營溢利會全數重投於業務的未來發展。

核心價值

- 以人為本
- 團隊精神
- 工作承諾
- 持續學習
- 創新思維

Mission

Building Partnership • Sharing Success

As a well-established "Social Enterprise" in Hong Kong, we proactively synergize social capitals from the Government, the business sector and the public adopting a "market-driven" and "customer-oriented" approach:

- We strive for business possibilities around to create employment opportunities for people with disabilities and the disadvantaged groups.
- Operating surpluses are fully reinvested into the business for future development.

Core Values

- People Oriented
- Teamwork
- Commitment
- Continuous Learning
- Innovation



社會效益亮點(2002-2015)

Social Impact Highlight (2002-2015)

營運中社企項目總數 No. of Operating SE projects	25
歷年僱員數目 (年度累計) No. of Accumulated Employees	1,996
歷年弱勢僱員數目 (年度累計) No. of Accumulated Disabled Employees	1,415
歷年營運收入 Accumulated Total Revenue	HK\$ 539,498,957
歷年政府種籽基金資助 Accumulated Grant from the Government	HK\$ 15,529,400
歷年發放給弱勢僱員薪酬 Accumulated Salary to Disabled Employees	HK\$ 54,178,563
歷年減省社會成本 Reduced Social Cost Over the years	HK\$ 69,100,800
《復康速遞》雜誌讀者人數 (53 期累計) No. of Readers of Rehab Express Magazine (Accumulated for 53 issues)	3,180,000
《復康速遞》雜誌對外慈善贊助 (53 期累計) Rehab Express Magazine Sponsored for Charity (Accumulated for 53 issues)	HK\$ 1,356,800
歷年採購社企及庇護工場產品 Responsible Procurement from SEs and Sheltered Workshops Over the Years	HK\$ 3,062,000



機構組織圖表

Organization Chart

香港心理衛生會執行委員會
Executive Committee of the Mental Health Association of Hong Kong

明途聯繫有限公司董事會
Board of Directors of MentalCare Connect Co., Ltd.



董事會主席：黎守信醫生
Chairman : Dr. Benjamin Lai



董事：盧德臨醫生
Director : Dr. Lo Tak Lam



董事：梁士雄先生
Director : Mr. Carlos Leung



董事：黃銘光醫生
Director : Dr. Wong Meng Kong



董事：鍾偉成先生
Director : Mr. Chung Wai Shing

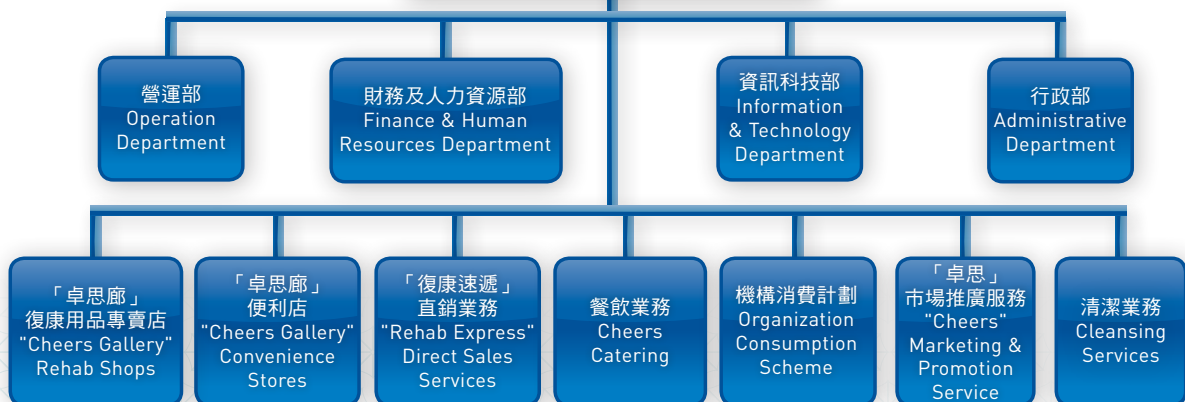


公司義務秘書：高淑蘭博士
Hon. Secretary : Dr. Flora Ko Suk Lan



列席：香港心理衛生會總幹事
何惠娟小姐
In attendance : Ms. Kimmy Ho Wai Kuen
(Director of MHAHK)

明途聯繫有限公司
MentalCare Connect Co. Ltd.
董事總經理：鍾偉成先生
Mr. Chung Wai Shing (Managing Director)





職員團隊

Staff Team





職員團隊

Staff Team

董事總經理 Managing Director

鍾偉成先生 Mr. Chung Wai Shing

高級經理 Senior Manager

黃秀花小姐 (財務及人力資源)
Ms. Christine Wong (Finance and Human Resources)

余志賢小姐 (銷售及市場推廣)
Ms. Cecilia Yu (Sales and Marketing)

林栩彤小姐 (零售及業務發展)
Ms. Rachel Lam (Retail and Business Development)

黃美賢小姐 (資訊科技及物流)
Ms. Cathy Wong (Information Technology and Logistic)

行政經理 Administrative Manager

黃子卓先生 Mr. Dobe Wong

業務經理 Business Manager

陳彩嫻小姐 (便利店)
Ms. Aggie Chan (Convenience Store)

蔡曉東先生 (機構消費計劃)
Mr. Tony Choy (Organization Consumption Scheme)

王國榮先生 (電子商務及市場推廣)
Mr. Dennis Wong (E-Commerce & Marketing)

陳玉鳳小姐 (餐飲服務)
Ms. Corinna Chan (Catering Service)

財務及人力資源 / 行政 / 業務主任 Finance and Human Resources/Administration/Shop Supervisor

關嘉穎小姐 (人力資源)
Ms. Wing Kwan (Human Resources)

陳倩嫻小姐 (會計)
Ms. Annis Chan (Accounting)

樊燕玲小姐 (會計)
Ms. Anita Fan (Accounting)

李詩敏小姐 (會計)
Ms. Mandy Lee (Accounting)

李 春小姐 (行政)
Ms. Printemps Lee (Administration)

梁孟威先生 (資訊科技)
Mr. Barry Leung (Information Technology)

李曜廷先生 (資訊科技)
Mr. Tony Li (Information Technology)

伍偉照先生 (銷售及市場推廣)
Mr. Wilfred Ng (Sales and Marketing)

王佩珊小姐 (銷售及市場推廣)
Ms. Rosetta Wong (Sales and Marketing)

郭素珊小姐 (物流)
Ms. Tiffany Kwok (Logistic)

店務主任

盧靜寧小姐
Ms. Ning Loo

李銘基先生
Mr. Andy Li

林玉青小姐
Ms. Dee Lam

李萍小姐
Ms. Don Lee

黃桂萍小姐
Ms. May Wong

李玉英小姐
Ms. Lee Yuk Ying

倪鎮惠先生
Mr. Amen Ngai

何美蓮小姐
Ms. Ho Mei Li

林映余小姐
Ms. Jenny Lam

卓馮美珍小姐
Ms. Monica Fung

陳玉鳳小姐 (兼任)
Ms. Corinna Chan

黃少娟小姐
Ms. Wendy Wong

林月娥小姐
Ms. Lam Yuet Agor

醫管局職員合作社
Hospital Authority Staff Co-op Shop

「卓思廊」律敦治醫院便利店
"Cheers Gallery" Ruttonjee Hospital Convenience Store

「卓思廊」威爾斯親王醫院便利店
"Cheers Gallery" Prince of Wales Hospital
Convenience Store

「卓思廊」瑪麗醫院復康生活幹線
"Cheers Gallery" Queen Mary Hospital Rehab Links

「卓思廊」香港防癌會賽馬會癌症康復中心
復康用品專賣店
"Cheers Gallery" The Hong Kong Anti-Cancer Society
Jockey Club Cancer Rehabilitation Centre

「卓思廊」明愛醫院復康生活幹線
"Cheers Gallery" Caritas Medical Centre Rehab Links

「卓思廊」九龍醫院復康用品專賣店
"Cheers Gallery" Kowloon Hospital Rehab Shop

「卓思廊」伊利沙伯醫院復康用品專賣店
"Cheers Gallery" Queen Elizabeth Hospital Rehab Shop

「卓思廊」屯門醫院復康用品專賣店
"Cheers Gallery" Tuen Mun Hospital Rehab Shop

「卓思廊」將軍澳醫院復康用品專賣店
"Cheers Gallery" Tseung Kwan O Hospital Rehab Shop

「卓思廊」博愛醫院復康用品專賣店
"Cheers Gallery" Pok Oi Hospital Rehab Shop

屯門醫院「喜点」
Cheers Bakery @ Tuen Mun Hospital

北區醫院「Cheers Café」
Cheers Cafe @ North District Hospital

九龍塘教育服務中心「Cheers Café」
Cheers Cafe @ Kowloon Tong Education Services Centre

南京街「悅購点」
Cheers Point @ Nanking Street

中半山「悅購点」
Cheers Point @ Mid-Levels





主席序言

Foreword by the Chairman

我懷著興奮及喜悅的心情與董事會成員，「明途聯繫」各員工及其他持份者分享公司過往 13 年的成長，尤其是過往一年的發展。

公司的總體營業額較過去一年增長約 11.6%，達至港幣一億零一百萬餘元。復康用品專賣店、便利店及機構消費計劃的營業額均錄得可觀的增幅。至 2015 年 3 月，公司共有 18 間店舖，大部份均已續約到 2016 至 2017 年。公司亦不斷優化產品的規模，並配合相宜的價格推銷，為公司的客群提供優質服務。

機構消費計劃與各機構正持續進行合作。「網購」於中國大陸及海外均高速增長，但香港人的購物習慣和生活模式卻稍有不同。但長遠而言，網上消費是一種合乎成本效益和方便的購物模式。公司與各加盟機構正緊密合作，相信網上消費計劃應可錄得不俗的增長，並能夠滿足各機構成員的需要。

在過去一年的財政年度，公司員工的總人數為 154 人，大約 7 成的員工屬於弱勢群體。公司在過去一年亦為 80 名學員提供了培訓機會。公司的發展體現了員工的努力不懈及無私奉獻。董事會相信，公司的管理層將一如既往尋找新的商機，為弱勢社群提供新的工作和培訓機會，以幫助他們能重投社會。

「明途聯繫」各社企項目的成功實有賴政府及公營機構在政策及執行上的支持。另外，私人企業的合作及配合亦同樣重要。董事會藉此鳴謝民政事務局、社會福利署、醫院管理局、各供應商，名譽顧問和其他持份者對公司一直以來的支持。董事會亦感謝鍾偉成先生及其團隊過往緊守崗位和辛勤工作，開創公司的成功。我亦要感謝麥香煥卿女士於過去 12 年期間擔任公司秘書一職，向董事會及公司提供寶貴意見及支援。最後，我需感謝董事會各成員對公司的獨到意見和不懈的支持。



明途聯繫有限公司
董事會主席
黎守信醫生

我怀着兴奋及喜悦的心情与董事会成员，「明途联系」各员工及其他持份者分享公司过往 13 年的成长，尤其是过往一年的发展。

公司的总体营业额较过去一年增长约 11.6%，达至港币一亿零一百万余元。复康用品专卖店、便利店及机构消费计划的营业额均录得可观的增幅。至 2015 年 3 月，公司共有 18 间店铺，大部份均已续约到 2016 至 2017 年。公司亦不断优化产品的规模，并配合相宜的价格推销，为公司的客群提供优质服务。

机构消费计划与各机构正持续进行合作。「网购」于中国大陆及海外均高速增长，但香港人的购物习惯和生活模式却稍有不同。但长远而言，网上消费是一种合乎成本效益和方便的购物模式。公司与各加盟机构正紧密合作，相信网上消费计划应可录得不俗的增长，并能够满足各机构成员的需要。

在过去一年的财政年度，公司员工的总人数为 154 人，大约 7 成的员工属于弱势群体。公司在过去一年亦为 80 名学员提供了培训机会。公司的发展体现了员工的努力不懈及无私奉献。董事会相信，公司的管理层将一如既往寻找新的商机，为弱势社群提供新的工作和培训机会，以帮助他们能重投社会。

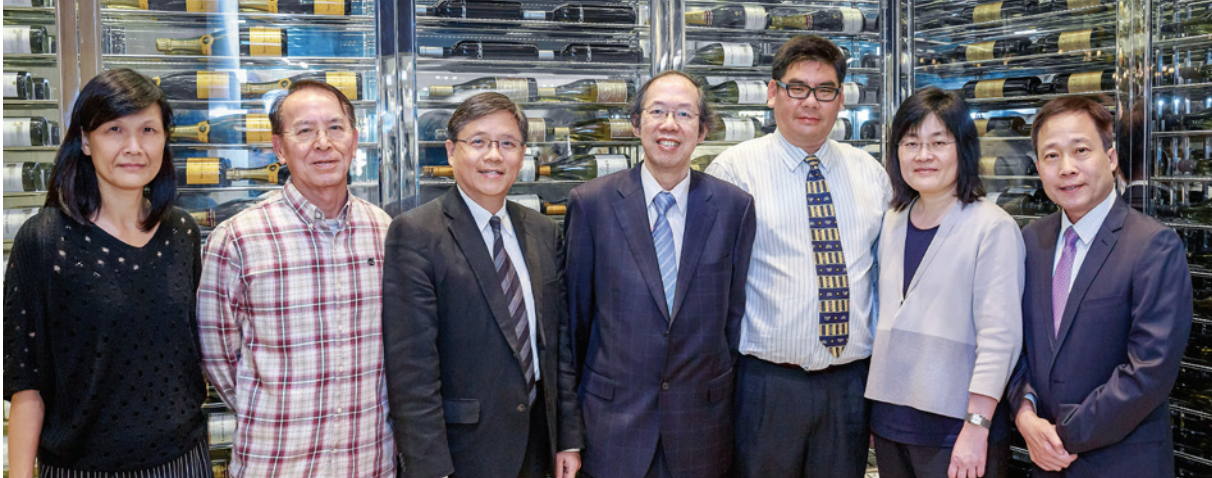
「明途联系」各社企项目的成功实有赖政府及公营机构在政策及执行上的支持。另外，私人企业的合作及配合亦同样重要。董事会藉此鸣谢民政事務局、社会福利署、医院管理局、各供应商，名誉顾问和其他持份者对公司一直以来的支持。董事会亦感谢钟伟成先生及其团队过往紧守岗位和辛勤工作，开创公司的成功。我亦要感谢麦香煥卿女士于过去 12 年期间担任公司秘书一职，向董事会及公司提供宝贵意见及支援。最后，我需感谢董事会各成员对公司的独到意见和不懈的支持。

明途联系有限公司
董事會主席
黎守信醫生



主席序言

Foreword by the Chairman



I am pleased to share the excitement and joy with Board members, staff of MentalCare Connect and other stakeholders on the continuing growth and development of the Company over the past thirteen years and particularly so in the past one year.

The turnover of the business of Company has grown to a hundred and one million Hong Kong dollars in the year with an overall growth of about 11.6% over the preceding year. There have been pleasing increases in turnover in sales of rehabilitation shops, convenience stores and the organization consumption products. Up to March 2015, the Company is operating 18 stores, with most of their contracts are renewed to 2016 - 2017. The Company is in a favorable position to enhance the range of our products with a reasonable price, and to provide a high level of service to those in need of our products.

The development of organization consumption scheme with various organizations is on-going. While on-line shopping has been fast growing in Mainland China and countries abroad, the buying habit and style of daily living in Hong Kong appear to be different. In the long run on-line shopping for a product appears to be a cost-effective and convenient alternative to buying the product in a shop. With the collaborative efforts of the Company and the various organizations, the service of on-line purchase of products should have a favorable progress and be able to meet the need of members of the organizations.

At the end of the fiscal year the total number of staff is 154, and about 70% of the staff belongs to the disadvantaged group. The Company has also provided training opportunities for 80 persons over the past

year. The growth of the Company cannot be achieved without the dedication, incessant effort and commitment of our staff. The Board is confident that the management of the Company will maintain its effort to look for new business opportunities, and to provide new work and training opportunities to the disadvantaged group and to facilitate their work integration.

The current model of the majority part of our projects depends on the continual support of the policy by the Government and public organizations, and the means by which the policy is supported and executed. It also depends on the continual support of and collaboration with private enterprises. The Board will like to thank the Home Affairs Bureau, Social Welfare Department, the Hospital Authority, suppliers, honorary advisors and other stakeholders for their continual support and advice to the Company. The Board is grateful to Mr. Chung Wai Shing and his staff for their dedication and hard work for the success of the Company. I wish to thank Mrs. Jenny Mak who had served as the Company secretary and provided guidance and support to the Board and the Company in the past twelve years. I also need to thank members of the Board for their insightful advice and untiring support to the Company.

Dr. Benjamin Lai
Chairman, Board of Directors
MentalCare Connect Co. Ltd.



行政報告

Executive Report

「沉著·前進」是英國在第二次世界大戰面對德軍的猛烈攻擊下，於風雨飄搖的日子呼籲國民保持冷靜，堅持信念，持續前行的口號。今天「明途聯繫」也是陷於苦戰的環境，昔日分享共同信念而出資發展社企的部門，為殘疾人士創造就業機會的親密戰友，現在竟出現「不回本不值得做」的心態；昔日為支持殘疾人士就業及社會共融而提供局限性服務合約 (Restricted Tender) 的公營機構，現在也變得有點唯利是圖，甚至考慮如果投標價不令他們滿意，不排除會將標書改回公開招標；更難測的是一些大型企業，對「明途聯繫」幾近無利可圖的業務也虎視眈眈。面對逆境，我不斷提醒自己及鼓勵同事，「沉著前進·毋忘初衷」。

財務表現

2014 - 2015 年度，公司收入為港幣 \$101,881,212 元，其中「創業展才能計劃」及「伙伴倡自強」社區協作計劃合共資助港幣 \$1,349,323 元作為多項社企項目的種籽基金，約佔整體收入的 1.32%。公司連續第三年獲得盈利，純利為港幣 \$166,457 元，比上年度倒退 80%，主要受工資上升、零售銷售增長放緩、租金高居難下及資本開支增加所影響。

履行核心使命

至 2015 年 3 月止，公司共聘用 154 位僱員，其中 106 名為殘疾人士。比對 2014 年度同期的 143 位僱員，增長率約為 8%，殘疾僱員的增長率也為 8%。是年度由各機構轉介到公司轄下各作業單位培訓的學員達 80 名。

業務發展

為配合網購及物流業務方面的發展，14 年 12 月公司開始租

用總部毗鄰工業大廈一個 3,000 多呎單位作為倉庫、客戶服務中心及物流基地。而更新所有店舖 POS 系統的改善工程及培訓亦於 15 年 3 月完成，過程雖然艱辛，但前線員工逐漸體驗到系統改善後對營運帶來的效益。

15 年 3 月成功投得大埔醫院便利店，進一步增加「卓思廊」在醫院的據點。由於醫院可供競投的店舖已近飽和，公司仍會積極在社區尋找合適經營零售生意的店舖。

協會消費計劃的網購平台已獲多間協會及大型社福機構加盟，有關電子商貿的業務已有明顯增長，年度營業額增長達 137%，期望獲利能力可逐步提昇。

餐飲業務轄下的 Cheers Café 及喜點的業績理想，在產品種類及成本控制方面都有改善，毛利率能保持在 60% 以上，年度營業額增長達 21%。

展望

展望未來，「明途聯繫」已擬定 3 年計劃 (2015-2018)，包括研究發行社會影響力債券 (Social Impact Bond) 的可行性、發展企業資源規劃系統 (ERP System)、擴展零售及餐飲門市、提升網上商店的營業額及獲利能力、加強新入職殘疾員工的支援等。可以預計，2015 - 2016 年度將會是驚濤駭浪的一年，營利前景未許樂觀，但相信「明途聯繫」的同事，本著共事共榮的精神，「沉著·前進」，再創佳績。在此感謝董事會對本人的指導及對公司各級同事的信任。祝願每位「明途聯繫」的持份者，身心康泰！

明途聯繫有限公司
董事總經理
鍾偉成



「沉著·前进」是英国在第二次世界大战面对德军的猛烈攻击下，于风雨飘摇的日子呼吁国民保持冷静，坚持信念，持续前行的口号。今天「明途联系」也是陷于苦战的环境，昔日分享共同信念而出资发展社企的部门，为残疾人士创造就业机会的亲密战友，现在竟出现「不回本不值得做」的心态；昔日为支持残疾人士就业及社会共融而提供局限性服务合约 (Restricted Tender) 的公营机构，现在也变得有点唯利是图，甚至考虑如果投标价不令他们满意，不排除会将标书改回公开招标；更难测的是一些大型企业，对「明途联系」几近无利可图的业务也虎视眈眈。面对逆境，我不断提醒自己及鼓励同事，「沉著前进·毋忘初衷」。

财务表现

2014 - 2015 年度，公司收入为港币 \$101,881,212 元，其中「创业展才能计划」及「伙伴倡自强」社区协作计划合共资助港币 \$1,349,323 元作为多项社企项目的种籽基金，约占整体收入的 1.32%。公司连续第三年获得盈利，纯利为港币 \$166,457 元，比上年度倒退 80%，主要受工资上升、零售销售增长放缓、租金高居难下及资本开支增加所影响。

履行核心使命

至 2015 年 3 月止，公司共聘用 154 位雇员，其中 106 名为残疾人士。比对 2014 年度同期的 143 位雇员，增长率约为 8%，残疾雇员的增长率也为 8%。是年度由各机构转介到公司辖下各作业单位培训的学员达 80 名。

业务发展

为配合网购及物流业务方面的发展，14 年 12 月公司开始租用总部毗邻工业大厦一个 3,000 多呎单位作为仓库、客户服务中心及物流基地。而更新所有店舖 POS 系统的改善工程及培训亦于 15 年 3 月完成，过程虽然艰辛，但前线员工逐渐体验到系统改善后对营运带来的效益。

15 年 3 月成功投得大埔医院便利店，进一步增加「卓思廊」在医院的据点。由于医院可供竞投的店舖已近饱和，公司仍会积极在社区寻找合适经营零售生意的店舖。

协会消费计划的网购平台已获多间协会及大型社福机构加盟，有关电子商贸的业务已有明显增长，年度营业额增长长达 137%，期望获利能力可逐步提升。

餐饮业务辖下的 Cheers Café 及喜点的业绩理想，在产品种类及成本控制方面都有改善，毛利率能保持在 60% 以上，年度营业额增长长达 21%。

展望

展望未来，「明途联系」已拟定 3 年计划 (2015-2018)，包括研究发行社会影响力债券 (Social Impact Bond) 的可行性、发展企业资源规划系统 (ERP System)、扩展零售及餐饮门市、提升网上商店的营业额及获利能力、加强新入职残疾员工的支援等。可以预计，2015 - 2016 年度将会是惊涛骇浪的一年，营利前景未许乐观，但相信「明途联系」的同事，本著共事共荣的精神，「沉著·前进」，再创佳绩。在此感谢董事会对本人的指导及对公司各级同事的信任。祝愿每位「明途联系」的持份者，身心康泰！

明途联系有限公司
董事总经理
锺伟成

"Keep Calm and Carry On" is a motivational slogan produced by British Government in World War II in preparation for the mass attacks from German army. The slogan is intended to raise the morale of the British public in remaining calm and keeping the faith to move forward. Today, MentalCare Connect faces similar scenario as the British public at that time. In the past time, Government departments and the comrades shared the same mission in developing social enterprises (SEs) to create working opportunities for the disabled and disadvantaged, but now they expressed that SE should be started up and operated in break-even basis. The Public Utilities skewed to be money-minded and considered to switch the restricted tender to be open only if they are satisfied with the tender price. In addition, some enterprises even eye on the business of MentalCare Connect despite the profit margin is extremely low. In such adverse situation, I continually remind myself and encourage my colleagues to keep calm and move forward with adhering to the dogma of setting up SE.

Financial Performance

MentalCare Connect recorded the revenue at HK\$101,881,212 in the fiscal year of 2014 -2015. The Grants from "Enhancing Employment of People with Disabilities through Small Enterprise" and "Enhancing Self-Reliance Through District Partnership Programme" Projects funded a total of HK\$1,349,323 as the seed money for various SE projects. It accounts for around 1.32% of total revenue. This is the third consecutive year that the Company making profit, with the net profit as HK\$166,457. However it showed a growth reduction by 80%. The reasons are the rise of wages, the deceleration of growth in retail sales, the increase in rental and the capital expenditure.

Core Mission Implementation

Up to March 2015, the Company employed a total of 154 staff, with 106 as disabled and disadvantaged person. With reference to 143 staff employed in the same period of Year 2014, the growth rate in staff and disabled employment are both 8%. Number of trainee from the referral organizations were 80.

Business Development

To comply with the development of online shopping and logistics service, the Company rented a unit of 3,000 sq ft in the adjacent industrial building, as the warehouse, customer service centre and

logistic hub. The revamping of POS system for all stores and the related training were completed in March 2015. Despite the process is difficult, the frontline staff can gradually enjoy and experience the benefits brought by the system later on.

In March 2015, MentalCare Connect secure the convenience store contract in Tai Po Hospital and further expand the number of outlets. Since the store for restricted tender is limited in hospitals, the Company will continue to look for appropriate business opportunities in the community.

Organization Consumption Scheme is co-operating with different large association and non-government organizations. The revenue relating to e-business shows a significant growth, with the revenue is up by 137%. The profitability is expected to be persistently growing.

Catering business includes Cheers Café and Cheers Bakery, which the business performance is satisfactory. The product range and cost control are keep improving, with gross profit can be maintained at above 60%, equivalent to a growth of revenue at 21 %.

Future

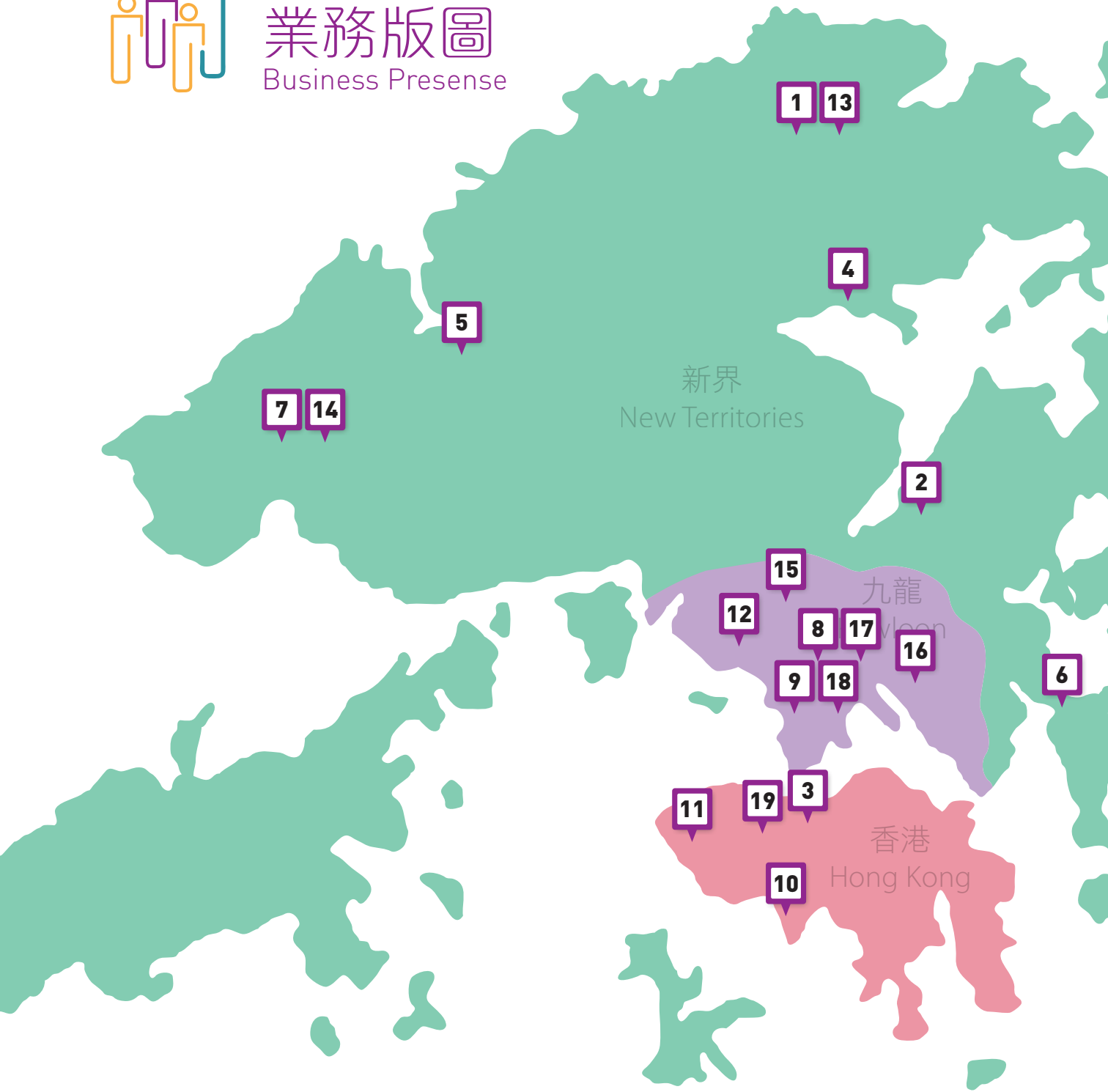
MentalCare Connect had developed a three-year business plan (Years 2015 to 2018), including the feasibility study of issuing social impact bond, development of Enterprise Resource Planning (ERP) system, expand the retail and catering outlets, enhance the revenue and profitability of e-Commerce and online shopping, strengthen the support for disabled and disadvantaged staff etc. It is anticipated that Year 2015 to 16 will be critical and maybe perilous, due to a pessimistic revenue forecast. I believed all MentalCare Connect staff will be capable to chart a new horizon by "keeping calm and carry on". I will take this opportunity to thank the Board of Directors for their unfailing guidance to myself and trust all tiers of staff. I wish all stakeholders of MentalCare Connect every best in the coming year.

Chung Wai Shing
Managing Director
MentalCare Connect Co. Ltd.



業務版圖

Business Presence





1 「卓思廊」北區醫院 24 小時便利店
"Cheers Gallery" North District Hospital
Convenience Store (24 hour)



2 「卓思廊」威爾斯親王醫院便利店
"Cheers Gallery" Prince of Wales
Hospital Convenience Store



3 「卓思廊」律敦治醫院 24 小時便利店
"Cheers Gallery" Ruttonjee Hospital
Convenience Store (24 hour)



4 「卓思廊」大埔醫院便利店
"Cheers Gallery" Tai Po Hospital
Convenience Store



5 「卓思廊」博愛醫院復康用品專賣店
"Cheers Gallery" Pok Oi Hospital
Rehab Shop



6 「卓思廊」將軍澳醫院復康用品專賣店
"Cheers Gallery" Tseung Kwan O
Hospital Rehab Shop



7 「卓思廊」屯門醫院復康用品專賣店
"Cheers Gallery" Tuen Mun Hospital
Rehab Shop



8 「卓思廊」九龍醫院復康用品專賣店
"Cheers Gallery" Kowloon Hospital
Rehab Shop



9 「卓思廊」伊利沙伯醫院復康用品專賣店
"Cheers Gallery" Queen Elizabeth
Hospital Rehab Shop



10 「卓思廊」香港防癌社會癌症康復
中心復康用品專賣店
"Cheers Gallery" The Hong Kong Anti-
Cancer Society Jockey Club Cancer
Rehabilitation Centre Rehab Shop



11 「卓思廊」瑪麗醫院復康生活幹線
"Cheers Gallery" Queen Mary Hospital
Rehab Links



12 「卓思廊」明愛醫院復康生活幹線
"Cheers Gallery" Caritas Medical
Centre Rehab Links



13 北區醫院「Cheers Café」
Cheers Café @ North District Hospital



14 屯門醫院「喜点」
Cheers Bakery @ Tuen Mun Hospital



15 教育局教育服務中心「Cheers Café」
Cheers Café @ ESC



16 東華三院黃大仙醫院職員餐廳
TWGHs Wong Tai Sin Hospital
Staff Canteen



17 醫院管理局職員合作社
Hospital Authority Staff Co-op Shop



18 「悦購点」(南京街)
Cheers Point @ Nanking Street



19 「悦購点」(中半山)
Cheers Point @ Mid-Levels



業務發展

Business Development



「卓思廊」零售網絡

以「卓思廊」為品牌的店舖有 12 間，業務範疇包括便利店、復康用品專賣店及復康生活幹線，分店主要遍佈於港九新界的公營醫院，為病人、照顧者及醫護人員提供方便快捷及貼心的零售服務。產品來自超過 400 個供應商，可供選擇的產品接近 5,000 種。

業務狀況

在資訊科技部門及各店舖主管的努力下，經歷近一年的 POS 系統更新計劃終於順利完成，特此感謝員工的學習精神及對新系統作出的適應，共同完成像是不可能的任務。系統更新結合了零售系統、倉存、網店、會員系統各類報表於一身，提供了全面線上及線下銷售，並且有助產品及市場分析，對日後推行中央採購及配送有莫大幫助，有利降低成本，增加效益。

2015 年 3 月成功投得大埔醫院便利店的經營權，店舖聘用 6 位僱員，其中 4 位為精神病康復者。

"Cheers Gallery" Retail Networks

MentalCare Connect currently operates 12 Cheers Gallery outlets, including Convenience Stores, Rehab Shop and Rehab Links, in public hospitals territory wide. They render convenient and attentive retail services to patients, caregivers and healthcare professionals. The outlets provide a total of approximately 5,000 products provided by over 400 suppliers.

Business Overview of Cheers Gallery

Under the unfailing endeavours from Information Technology Department and the store supervisors, POS system was successfully launched after a year's modification and update. MentalCare Connect thanks all staff's learning attitude and adaptation to the new system, which converts an impossible mission to be possible. The modified system integrates retail system, warehousing, online store and membership system to be under one platform, supporting on-line and off-line sales. In addition, the new system furnishes useful information for product sales market analyses and further promotes the central purchasing and delivery. All these are paramount in reducing the cost and enhancing the effectiveness.

In March 2015, MentalCare Connect secured a contract in the operations of Tai Po Hospital Convenience Store. It hires 6 workers and 4 of them are mentally ill person.



「卓思廊」便利店分店網絡：

【北區醫院】【威爾斯親王醫院】

【律敦治醫院】【大埔醫院】

「卓思廊」復康用品專賣店及
復康生活幹線分店網絡：

【博愛醫院】【將軍澳醫院】

【屯門醫院】【香港防癌症會癌症康復中心】

【九龍醫院】【伊利沙伯醫院】【瑪麗醫院】【明愛醫院】

"Cheers Gallery" Convenience Store Branches:

【North District Hospital】【Prince of Wales Hospital】

【Ruttonjee Hospital】【Tai Po Hospital】

"Cheers Gallery" Rehab Shop and
Rehab Links Branches:

【Pok Oi Hospital】【Tseung Kwan O Hospital】

【Tuen Mun Hospital】

【The Hong Kong Anti-Cancer Society Jockey Club
Cancer Rehabilitation Centre】

【Kowloon Hospital】【Queen Elizabeth Hospital】

【Queen Mary Hospital】【Caritas Medical Centre】



復康速遞直銷業務

www.rehabexpress.com.hk

全港最多元化的復康用品網上商店
提供復康用品價格及資訊平台

電話訂購熱線：8206 6160

傳真訂購熱線：2710 8322

全港家居送貨服務

www.rehabexpress.com.hk 為全港長者及病友提供「一站式」及「直接到戶」的復康用品家居送貨服務，為行動有障礙的市民補充日常所需的復康用品，衝破地域的限制，為病友及照顧者帶來無限方便。為顧及病者的經濟需要，購貨滿 300 元便可獲免費送貨服務。

業務狀況

「復康速遞」的購物網站已於 2014 年下旬完成介面及流程改革，強化了會員系統。由於會員資料連結了銷售紀錄，公司可以了解會員購物習慣，有利定期為會員介紹新產品及優惠，從而增加銷售量。



Rehab Express Direct Sales Service

www.rehabexpress.com.hk

Most Diversified Rehab Product Online Platform in Hong Kong

A Platform for Providing Price and Information of Rehab Products

Purchase Hotline: 8206 6160

Fax Purchase Hotline: 2710 8322

Home Delivery Service in Hong Kong

www.rehabexpress.com.hk provides one-stop and direct delivery service of rehabilitation products for elderly/chronic patients and home-bound patients in Hong Kong. Our objective is to help home-bound patients to restock consumable rehabilitation products for their daily use. Patients and carers can enjoy a tremendous convenience without geographical limitations.

Business Overview

The interface and operational flow of Rehab Express online shopping platform was revamped and completed in late 2014. The membership system was also strengthened. The particulars of members and their shopping record were linked up, which enables us to realise their shopping habits and facilitate the formulation of promotional strategies for new products and membership privilege, in turn increase the sales.



《復康速遞》雙月刊

全港首創的復康專題雜誌

由醫護及專業人士執筆，為病友提供具公信力的復康資訊，加強病友及照顧者在復康過程中掌握日常護理及照顧的知識技巧，配合復康用品的使用資訊，促進病友康復。

派發數量：20,000 本（雙月刊）

派發渠道：透過「醫管局健康資訊天地」派發至全港所有公立醫院，並於各「卓思廊」分店交易時免費附贈。

網上瀏覽內容 Content online : www.rehabexpress.com.hk

"Rehab Express" Magazine

The First Magazine on Rehabilitation in Hong Kong

Featuring articles written by health care experts and professionals to provide reliable rehabilitation information to patients and thus facilitating their recovery process.

Distribution figure: 20,000 copies (bi-monthly issue)

Distribution channels: "Rehab Express" Magazine are distributed to all public hospitals in Hong Kong through the "HA Health Info World". It is also distributed free of charge at all "Cheers Gallery" branches.



「卓思」市場推廣服務

由「卓思」市場推廣服務主要為醫療及復康用品供應商及各大藥廠提供一站式市場推廣服務，包括度身訂造市場推廣計劃，宣傳刊物設計、印刷及派發服務，協辦醫院展銷及舉辦健康教育講座等，為全港病友及長者提供全面的健康教育資訊。

營銷及推廣渠道包括：

- 300 多間醫療復康用品供應商網絡；
- 「卓思廊」駐本港各大醫院的零售店網絡；
- 《復康速遞》雙月刊及網上銷售平台；
- 「卓思廊」會員；
- 公營醫院的病人資源中心及病人組織；
- 與長者安居服務協會等團體合辦健康教育講座，加強全港各區長者的健康及自我照顧意識。

業務狀況

透過「復康速遞」的會員計劃，我們累積了超過 5 萬名會員，我們會定期透過電子通訊將健康訊息、產品推廣及健康活動的資訊發放予會員。同時，由於掌握了會員的消費模式及習慣，供應商亦可透過此「會員資料庫」，針對性向其目標顧客群發放相關產品資訊及優惠，增加推廣效益。

"Cheers" Marketing and Promotion Services

"Cheers" Marketing and Promotion Service provides a one-stop marketing services to medical and rehabilitation product suppliers, as well as pharmaceutical companies. The services include tailor-made marketing plans, promotional publication design, printing and logistic services. We will assist in organising hospital exhibition, health talk and seminars etc. for rendering comprehensive health education to patients and elderly in Hong Kong.

Marketing and promotion channels include:

- More than 300 medical rehabilitation product supplier networks;
- Retail network of "Cheers Gallery" operating in Hong Kong major hospital
- "Rehab Express" bimonthly magazine and online sales platforms;
- "Cheers Gallery" membership;
- Patient resource centers in public hospitals and patients' organizations;
- Collaborated with Senior Citizen Home Safety Association and other organizations to jointly organise health talk for promoting health and self-care awareness to elderly.

Business Overview

Through the membership programme of "Rehab Express", more than 50,000 members are registered. We would regularly deliver health news, promotion and activity information to members. In addition, supplier can retrieve the information with studying members' spending pattern and habits for targeting specific customer segments. This can synergize the promotional effectiveness.





機構消費計劃

此計劃開立的目的是為不同協會，專業團體及機構的會員及員工，提供切合個別機構需要的採購項目及高折扣的會員消費平台，以比市價優惠的價格提供各種日常生活產品。

計劃涵蓋三個部份，結合刊物、實體店及虛擬網店，為會員提供最大的優惠及便利。

實體商店

計劃現時設有兩間實體商店 - 「醫管局職員合作社」及「女青會員優惠坊」，分別為超過 70,000 名醫管局職員及 30,000 名「香港女青年會」職員及會員提供優質的產品和銷售服務。

網上商店 www.cheerspointnet.com.hk

建基於現有醫管局及香港保險從業員協會的專屬網購平台，本年度更拓展「悅購網」網上商店，讓更多不同類形的協會及專業團體參與，以擴大經營規模，增加效益，同時接受社福機構將其產品上架，支持良心消費。新加入的團體包括香港心理衛生會、香港工程師學會、聖雅各福群會、香港社會工作者總工會及香港職業發展服務處。

Organization Consumption Scheme

The objective of the project is to tailor-made shopping platforms for members of different associations, professional groups and organizations at competitive price.

The scheme composed of magazine, physical shops and online store which all render incomparable discount and convenience to customers.

Physical Shop

The scheme has two physical shop – HA Co-op shop and YWCA Y-Delight, which provide high quality products and services to 70,000 HA staff and 30,000 YWCA staff and members respectively.

"Online store" www.cheerspointnet.com.hk

Based on the success of online platform of Hospital Authority and Life Underwriter Association of Hong Kong, Cheers Point Net is developed. It can allow different professional associations and organizations to participate, which further expand and enhance the operation scale and effectiveness. In addition, this serves as a channel for products produced by other social service organizations to reach the public. The newly joined organizations include the Mental Health Association of Hong Kong, the Hong Kong Institution of Engineers, St. James 'Settlement, Hong Kong Social Workers' General Union and the Hong Kong Employment Development Service.



瑞士殿堂級「肌膚細胞再生專家」



業務發展

Business Development

實體商店分店網絡

- 【醫院管理局職員合作社】
- 【悅購點 - 佐敦南京街】
- 【悅購點 - 中半山】

主要加盟機構

- 香港人壽保險從業員協會
- 香港女青年會
- 香港心理衛生會
- 香港工程師學會
- 聖雅各福群會
- 香港社會工作者總工會
- 職業發展服務處

Physical Shop network

- 【Hospital Authority Staff Co-op Shop】
- 【Cheers Point @ Nanking Street】
- 【Cheers Point @ Mid-Levels】

Newly joined organizations

- Life Underwriters Association of Hong Kong
- YWCA
- The Mental Health Association of Hong Kong
- The Hong Kong Institution of Engineers
- St. James 'Settlement
- Hong Kong Social Workers' General Union
- The Hong Kong Employment Development Service.



雜誌

除了現有的「醫管局員工優惠計劃」外，更計劃於下年度為「悅購網」會員編制聖誕及賀年小冊子，讓更多會員可於佳節享受節慶購物樂趣。

Magazine

In addition to the existing "HA staff welfare scheme", Christmas and New Year brochures are prepared for members of Cheers Point Net next financial year. This further enhance the client base for enjoying the festivals.





餐飲業務

業務狀況

「明途聯繫」轄下的餐飲業務主要以提供輕食的 Café 及 Bakery 為主，初期大部份食品均由供應商提供，至現在店面的前線同事已能處理更多自家製作的食品，如熱狗、三文治、窩夫及其他特色小食。員工的持續學習和嘗試，一方面減低成本、增加毛利，另邊廂亦可提高顧客的滿意度。

剛知道「明途聯繫」投得東華三院黃大仙醫院職員餐廳的合約，相信同事要花更多的努力，經營一家規模更大和服務要求更高的餐廳。

分店網絡：

Cheers Café

- 【北區醫院】
- 【教育局教育服務中心】
- 【東華三院黃大仙醫院職員餐廳】

Cheers Bakery「喜点」

- 【屯門醫院】

Catering Service

Business Overview

MentalCare Connect operates catering service as Cheers Café and Cheers Bakery, specializing in offering light refreshment. At the start of the business, most of the products are supplied by vendors. Currently, our frontline staffs are capable of making products in the restaurants, such as hot dog, sandwiches, waffle and other featured snacks. Our staff will try and learn persistently in the operations, for reducing the cost and maximizing the profit, along with enhancing customer satisfactions.

Good news arrived just in time. Our catering service has secured the contract of staff canteen at TWGHs Wong Tai Sin Hospital. Our staffs are required to further contribute more efforts in operating an eatery with unprecedented scale and expectations.

Cheers Café

- 【North District Hospital】
- 【EDB Education Services Centre】
- 【TWGHs Wong Tai Sin Hospital Staff Canteen】

Cheers Bakery

- 【Tuen Mun Hospital】



「明途聯繫」致力實踐企業社會責任，一直以來主動關心社會弱勢社群的需要，為精神病康復者創造就業及訓練的機會，並積極參與有關社企的交流與經驗分享，及實踐責任採購，期望能夠起著示範的作用，帶來對社會更大的影響力。

MentalCare Connect is committed to the practice of corporate social responsibility, and proactively care about the needs of disadvantaged. The Company also creates job and training opportunities to the people with mental disabilities, as well as shares and exchanges experience in operating social enterprises. We would also practise responsible procurement and act as a role model to other enterprises, and further generate positive impact to the society.

10年 Plus「商界展關懷」嘉許標誌

「明途聯繫」履行良好社會責任已連續超過十年，於本年度「商界展關懷」繼續榮獲香港社會服務聯會頒發 10年 Plus「商界展關懷」標誌。

"MentalCare Contact" has fulfilled the good social responsibility for more than 10 years, she awarded the "Caring Company Logo 10-year Plus" presented by the Hong Kong Council of Social Service this year.



關懷大使

Caring Ambassadors

伍偉照先生 陳玉鳳小姐 陳彩嫻小姐

Mr. Wilfred Ng Ms. Corinna Chan Ms. Aggie Chan

「第五屆香港傑出企業公民獎」(社會企業組)

「復康速遞直銷業務」榮獲由香港生產力促進局及公民教育委員會主辦「第五屆香港企業公民計劃」設立的「香港企業公民嘉許計劃」社會企業組中的金獎及餐飲業務獲頒優異獎殊榮。

"Rehab Express" Direct Sales Service and Catering Service won the Golden Award and Merit Award of "The 5th Hong Kong Outstanding Corporate Citizenship Award" (Social Enterprise Category) organized by HKPC, co-organized by the Committee on the Promotion of Civic Education.



傑出友善家庭僱主

「明途聯繫」獲選由家庭議會舉辦的「家庭友善僱主獎勵計劃」機構組的「傑出家庭友善僱主」及連續參與的「特別獎」。

"MentalCare Connect" awarded the "Distinguished Family-Friendly Employer Certificate" under Organizations Category organized by the Family Council and also received "Special Award".



至尊共融機構獎項

獲勞務局及康復諮詢委員會舉辦的「有能者・聘之約章」之「共融機構嘉許計劃」所頒發的最高級別「至尊共融機構獎」。

The Labour and Welfare Bureau, in collaboration with the Rehabilitation Advisory Committee launched the "Talent-Wise Employment Charter and Inclusive Organizations Recognition Scheme", "MentalCare Connect" received the highest honour of the recognition – "Supreme Inclusive Organizations Award".



社企認證（創越級）標誌

「卓思廊」榮獲由社企總會主辦，由財政司司長曾俊華先生頒發的最高級別的社企認證（創越級）標誌，彰顯「卓思廊」在社企界卓著的營運，規模及成就。

"Cheers Gallery" won the Advanced award – the highest tier in "Social Enterprise Endorsement Marks", epitomizing its outstanding operations, scale and achievement in SE industry. Mr. John Tsang, The Financial Secretary of HKSAR, presented the SEE Marks.



十八區關愛僱主

「明途聯繫」獲香港復康聯會頒發 2014 年國際復康日「十八區關愛僱主」及「連續 5 年或以上大獎」嘉許，以表揚公司聘用及推動殘疾人士平等就業機會。

"MentalCare Connect" was awarded with "18 Districts Caring Employers 2014 Award" cum "Special Award for being awarded for 5 consecutive years or above" for recognizing our Company's effort in promoting and employing people with disabilities.





員工參與及成就

Employee Participation & Achievement

快樂工作間僱員嘉許禮 "Happy Work Place for Disabled Employee" Ceremony

「悅購點」店長林月娥及 Cheers Café @ ESC 高級店員羅惠瓊分別在社會福利署舉辦的「快樂工作間」殘疾僱員嘉許禮獲署長嘉許，並在特刊中分享復康經歷。

Lam Yuet Agor, shop supervisor of "Cheers Point" and Law Wai King, senior shop assistant of "Cheers Café" were awarded in the "Happy Work Place for Disabled Employee" organized by Social Welfare Department and they also shared their SE working experience and awards presented by the Director of Social Welfare.



發揮所長 互勉共融

CheersCafé
地址：九龍九龍城沙福道19號悅康閣
九龍維多利亞道中心商場地下202室
電話：2794 1101 傳真：2794 1102
網頁：www.mentalfcare.com.hk
電郵：cheers_cafetering@mentalfcare.com.hk

營業時間
星期一至六 上午8:00至晚上7:00
(公眾假期休息)



羅惠瓊(阿瓊)最初加入明達聯豐有限公司是在旗下北區醫院的 Cheers Café 任職店員。公司提供了一個相對穩定及和諧的工作環境給阿瓊工作；阿瓊透過工作，能夠與外界接觸，亦尋找到嚮往的工作樂趣及人生方向，她亦感到非常高興。阿瓊能在工作中與同事互勉共融，表現理想，與同事相處融洽並彼此合作無間。當時的店長亦相當賞識阿瓊，認為她能接受新的工作挑戰，故此提拔她為高級店員。並調往至九龍補教育服務中心的 Cheers Café。阿瓊亦感到自己的努力得到上司的認同，工作的滿足感油然而生，引以為豪。

「首先，非常感謝公司在我最迫切需要幫助的時候，拉了我一把，讓我得到一個重新融入社會的機會，還教曉了我不少擔任工作的新知識和技能，在日常工作環境中獲得實踐，另外更增強了我工作的技能。現在的我，對自力更生充滿濃厚信心。同時，我要多謝上下各同事、合作伙伴及客人一直以來的包容、支持和鼓勵，讓我有機會繼續學習和成長。

最後，我希望藉著在這裏工作，讓更多社會人士明白康復者，了解康復者也能貢獻社會，消除並化解彼此的誤解和歧視，達致和諧共融。」

阿瓊員工
羅惠瓊



「快樂工作間」僱員嘉許禮頒發給僱員嘉許禮
Happy Work Place Award
Appreciation Programme for Disabled Employee



「快樂工作間」僱員嘉許禮頒發給僱員嘉許禮
Happy Work Place Award
Appreciation Programme for Disabled Employee



悅購點 Cheers Point
地址：九龍佐敦南京街12號地下
電話：2264 8027 傳真：2264 8029
網頁：www.mentalfcare.com.hk
電郵：cesc_yu@mentalfcare.com.hk

營業時間
星期一至五 上午10:00至晚上8:00
星期六至日及公眾假期
上午11:00至晚上8:00



提起殘疾人士，大眾相對地較以前接納殘疾人士在工作上如平凡人一般。但在十數年前，我們的同事-林月娥（娥姐），一個平凡人卻擁有一段不凡的經歷。

娥姐曾獲聘於私人機構任職，雖然行動不便，但仍然自食其力，以努力賺取薪酬。可惜，她屢遭同事們質疑她的工作能力，令娥姐飽受歧視之苦。儘管如此，娥姐仍敬業樂業。後來只因行業式微，娥姐只好無奈地接受被公司解僱的現實。好景不常，娥姐的丈夫亦因病不能工作，唯有依靠綜援維持生計。

雖然禍不單行，但娥姐絕無自怨自艾。她希望自力更生，於是積極尋找工作，可惜其後數份工作，都因不同原因而辭職。在一次偶然的機會下，娥姐接觸到明達聯豐有限公司，於2008年經同事介紹下奉派為店員任職。工作表現理想，與同事相處融洽並合作無間，公司亦知人善任，於2011年獲升娥姐到管理層負責合作任職店長。娥姐亦感到自己的努力得到回報，從而略略到工作的滿足感。公司亦信任娥姐，明白她可接受挑戰，故於2013年調動娥姐參與南京街康復用品店轉型及機械化的店長工作。她勇於接受改變，工作態度更獲得同事信賴。

「在公司工作的幾年間，我很感謝同事對我的包容。與我之前的任職的機構相比，這裏同事之間的關係實在和諧得多。我很感謝公司給予我機會接受不同的挑戰，令我覺得積極和快樂。而我的女兒兒我的遭遇得到改善，立志將來要從事社會服務工作，幫助更多弱勢社群。」

阿瓊員工
林月娥





員工參與及成就

Employee Participation & Achievement

「社企優秀員工計劃 2014」嘉許禮

"Social Enterprise Outstanding Employee Recognition Project 2014" Ceremony

12位員工獲香港社企總會舉辦之「社企優秀員工計劃2014」的嘉許。

12 staff were awarded in "Social Enterprise Outstanding Employee Recognition Project 2014".



優秀員工名單

「卓思廊」復康用品專賣店(九龍醫院) 李玉英小姐
 「卓思廊」復康用品專賣店(瑪麗醫院) 李 萍小姐
 「卓思廊」復康用品專賣店(伊利沙伯醫院) 何焯娥小姐
 「卓思廊」復康用品專賣店(將軍澳醫院) 許慧妍小姐
 「卓思廊」復康用品專賣店(明愛醫院) 何靜儀小姐
 「卓思廊」復康用品專賣店(屯門醫院) 葉笙胡小姐
 「卓思廊」便利店(北區醫院) 潘志偉先生
 「卓思廊」便利店(律敦治醫院) 李銘基先生
 「卓思廊」便利店(博愛醫院) 王佩君小姐
 「復康速遞」直銷業務 黃詠汶小姐
 機構消費計劃 - 悅購網 陳頌敏小姐
 機構消費計劃 - 醫管局職員合作社 劉顯庭先生

Outstanding Employee

"Cheers Gallery" Kowloon Hospital Rehab Shop Ms. Lee Yuk Ying
 "Cheers Gallery" Queen Mary Hospital Rehab Links Ms. Lee Ping
 "Cheers Gallery" Queen Elizabeth Hospital Rehab Shop Ms. Ho Mau Ngor
 "Cheers Gallery" Tseung Kwan O Hospital Rehab Shop Ms. Hui Wai Yin
 "Cheers Gallery" Caritas Medical Centre Rehab Links Ms. Ho Ching Yee
 "Cheers Gallery" Tuen Mun Hospital Rehab Shop Ms. Yip Sang Wu
 "Cheers Gallery" North District Hospital Convenience Shop Mr. Pan Chi Wai
 "Cheers Gallery" Ruttonjee Hospital Convenience Shop Mr. Li Ming Kee
 "Cheers Gallery" Pok Oi Hospital Convenience Shop & Rehab Shop Ms. Wong Pui Kwan
 "Rehab Express" Direct Sales Service Mr. Wong Wing Man
 Organization Consumption Project - Cheers Point Net Ms. Chan Chung Man
 Organization Consumption Scheme - Hospital Authority Staff Co-op Shop Mr. Lau Hin Ting

賣旗日及「同心喜跑慈善馬拉松」 Flay Day and "Run for Positive Mental Health"

公司員工積極參與母機構舉辦的賣旗日及六十周年「同心喜跑慈善馬拉松」。

"MentalCare" staff participated actively in the Flag Day organized by mother organization and "Run for Positive Mental Health" for her 60th Anniversary.



「明途聯繫」培訓工作坊 MentalCare Connect Training Workshop

母會的訓練及就業服務中心於2014年11月15日為「明途聯繫」管理層員工在香港心理衛生會賽馬會大樓舉行培訓工作坊，內容包括「明途聯繫」的發展歷程、互動工作坊、及督導精神病康復者員工的個案分享。

Training and Employment Service Centre of MHAHK organized a training workshop to the managerial staff of "MentalCare", in relation to the development of the Company, interactive workshop and case study in supervising employee with mental disabilities at the Hong Kong Jockey Club Building of the Mental Health Association of Hong Kong on 15 November 2014.



「明途聯繫」週年聚餐 "MentalCare" Annual Dinner 2014-2015

公司於3月14日舉行周年聚餐，當晚頒發5年及10年長期服務獎予得獎員工。董事會主席黎守信醫生、董事黃銘光醫生及近100位員工出席。

"MentalCare" held its annual dinner and presented 5-year and 10-year long service awards. Board Chairman Dr. Benjamin Lai, Board member Dr. Wong Meng Kong and approx. 100 staff attended the dinner.

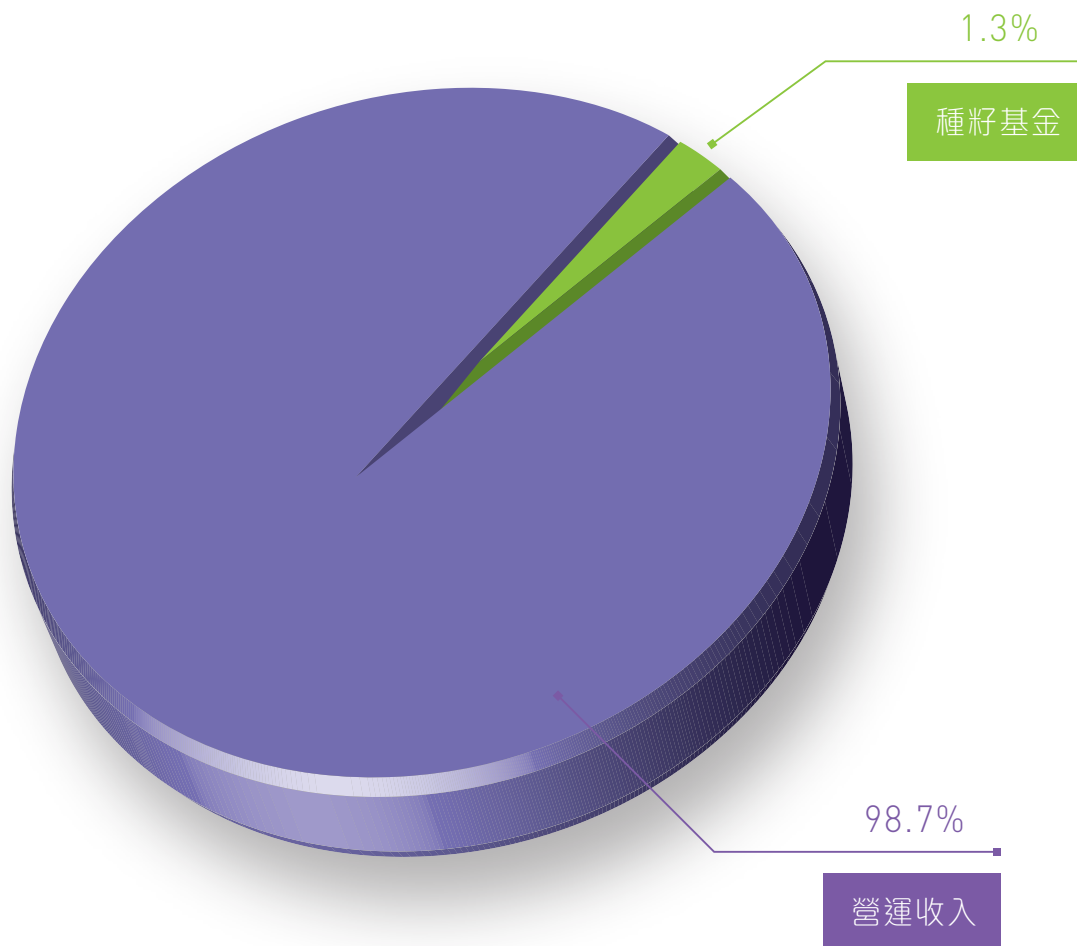




財務回報 2014-2015

Financial Return

2014-2015 年度 總收入 Annual Revenue	: HK\$101,881,212
種籽基金贊助 Grant Sponsorship	: HK\$1,349,323
營運收入 Revenue	: HK\$100,469,889





審計報告 2014-2015

Auditor's Report



T M HO SO & LEUNG CPA LIMITED

CERTIFIED PUBLIC ACCOUNTANTS (PRACTISING)

RMS 405 A, KAI TAK COMM. BLDG., 317-319 DES VOEUX ROAD CENTRAL, HONG KONG

TEL : (852) 2526 1277 FAX : (852) 2845 3900

E-mail: info@thoalingcpa.com

何錫文 蘇漢東 梁樹賢會計師行有限公司

香港中環德輔道中317-319號

香港商業大廈405室

電話：(852) 2526 1277

傳真：(852) 2845 3900

INDEPENDENT AUDITOR'S REPORT

TO THE MEMBERS OF MENTALCARE CONNECT COMPANY LIMITED

明達聯繫有限公司

(incorporated in Hong Kong with limited liability)

We have audited the financial statements of Mentalcare Connect Company Limited ("the Company") set out on pages 5 to 18, which comprise the statement of financial position as at 31 March 2015, and the statement of comprehensive income, the statement of cash flows and the statement of changes in equity for the year then ended, and a summary of significant accounting policies and other explanatory information.

Directors' Responsibility for the Financial Statements

The directors are responsible for the preparation of financial statements that give a true and fair view in accordance with the Hong Kong Financial Reporting Standard for Private Entities issued by the Hong Kong Institute of Certified Public Accountants and the Hong Kong Companies Ordinance, and for such internal control as the directors determine is necessary to enable the preparation of financial statements that are free from material misstatement, whether due to fraud or error.

Auditor's Responsibility

Our responsibility is to express an opinion on these financial statements based on our audit and to report our opinion solely to you, as a body, in accordance with section 405 of the Hong Kong Companies Ordinance and for no other purpose. We do not assume responsibility towards or accept liability to any other person for the contents of this report. We conducted our audit in accordance with Hong Kong Standards on Auditing issued by the Hong Kong Institute of Certified Public Accountants. Those standards require that we comply with ethical requirements and plan and perform the audit to obtain reasonable assurance about whether the financial statements are free from material misstatement.

An audit involves performing procedures to obtain audit evidence about the amounts and disclosures in the financial statements. The procedures selected depend on the auditor's judgment, including the assessment of the risks of material misstatement of the financial statements, whether due to fraud or error. In making those risk assessments, the auditor considers internal control relevant to the entity's preparation of financial statements that give a true and fair view in order to design audit procedures that are appropriate in the circumstances, but not for the purpose of expressing an opinion on the effectiveness of the entity's internal control. An audit also includes evaluating the appropriateness of accounting policies used and the reasonableness of accounting estimates made by the directors, as well as evaluating the overall presentation of the financial statements.

Page 3

T M HO SO & LEUNG CPA LTD.

CERTIFIED PUBLIC ACCOUNTANTS

We believe that the audit evidence we have obtained is sufficient and appropriate to provide a basis for our audit opinion.

Opinion

In our opinion, the financial statements give a true and fair view of the financial position of the Company as at 31 March 2015, and of its financial performance and cash flows for the year then ended in accordance with the Hong Kong Financial Reporting Standard for Private Entities and have been properly prepared in compliance with the Hong Kong Companies Ordinance.

Emphasis of Matter

Without qualifying our opinion, we draw attention to the financial statements which indicates that the total liabilities have exceeded its total assets as at 31 March 2015. This condition indicates the existence of a material uncertainty which may cast doubt about the Company's ability to continue as a going concern. As stated in Note 23 to the financial statements we are assured that continuing financial support from the immediate parent and ultimate controlling party will be forthcoming.

T.M. Ho So & Leung CPA Ltd.

T.M. Ho So & Leung CPA Limited
Certified Public Accountants (Practising)
Hong Kong

Date: 23 SEP 2015

Practising Director: Kwok Kam Sim
Practising Certificate No.: P03736

Page 4



審計報告 2014-2015

Auditor's Report

MENTALCARE CONNECT COMPANY LIMITED
明途聯繫有限公司
STATEMENT OF FINANCIAL POSITION
AS AT 31 MARCH 2015

	NOTE	2015 HK\$	2014 HK\$
NON-CURRENT ASSETS			
Plant and equipment	4	2,487,244	1,991,038
CURRENT ASSETS			
Inventories	5	4,793,917	4,405,332
Deposits		314,380	256,693
Payment in advance		58,501	70,670
Trade and other receivables		2,138,434	3,096,307
Cash and bank balances		5,927,546	3,137,615
		13,232,778	10,966,617
CURRENT LIABILITIES			
Accrued expenses		2,518,149	1,269,230
Trade and other payables		10,210,593	8,640,325
Received in advance		269,611	361,417
Deferred income	6	1,022,416	1,153,887
		14,020,769	11,424,859
NET CURRENT LIABILITIES			
		(787,991)	(458,242)
TOTAL ASSETS LESS CURRENT LIABILITIES			
		1,699,253	1,532,796
NON-CURRENT LIABILITIES			
Amount due to immediate parent and ultimate controlling party	7	(3,075,984)	(3,075,984)
NET LIABILITIES			
		(1,376,731)	(1,543,188)
Represented by:			
Share capital	8	4	4
SWD funds		161,986	161,986
Accumulated losses		(1,538,721)	(1,705,178)
TOTAL FUND AND RESERVES			
		(1,376,731)	(1,543,188)

The accompanying accounting policies and explanatory notes form an integral part of, and should be read in conjunction with, these financial statements.

These financial statements were approved and authorised for issue by the Company's Board of Directors on 22 SEP 2015

Lai Benjamin
Director

Wong Meng Kong
Director

Page 5

MENTALCARE CONNECT COMPANY LIMITED
明途聯繫有限公司
STATEMENT OF COMPREHENSIVE INCOME
FOR THE YEAR ENDED 31 MARCH 2015

	NOTE	2015 HK\$	2014 HK\$
INCOME			
Grant income	6	1,349,323	2,344,296
Sales income - Rehab products		42,315,937	39,088,465
Sales income - Convenience stores		9,947,447	9,398,991
Sales income - Others		739,208	649,986
Sales income - Cheers café and bakery		4,689,683	3,856,065
Sales income - Organizational consumption projects		37,359,854	31,632,517
Income from cleaning services		344,200	409,996
Income from advertising		4,919,698	3,806,061
Sundry income		205,862	268,240
Total Income	10	101,881,212	91,454,867
EXPENDITURE			
Cost of sales - Rehab products	11	30,361,681	28,174,177
Cost of sales - Convenience stores	12	5,974,144	5,690,539
Cost of sales - Cheers café and bakery	13	1,738,610	1,696,878
Cost of sales - Organizational consumption projects	14	33,320,517	28,492,319
Cost of sales - Others	15	0	18,445
Direct cost of cleaning services		244,553	102,452
Direct cost of advertising income		1,303,460	1,131,910
Staff Cost			
- Salaries, wages and allowances		14,879,820	12,993,577
- Contribution to MPF		686,379	586,684
Depreciation on plant and equipment	4	1,073,320	901,846
Management fee to immediate parent and ultimate controlling party		601,956	533,053
Other operating expenses	16	11,530,315	10,291,726
Total Expenditure		101,714,755	90,613,606
PROFIT AND TOTAL COMPREHENSIVE INCOME FOR THE YEAR	10	166,457	841,061

The accompanying accounting policies and explanatory notes form an integral part of, and should be read in conjunction with, these financial statements.

Page 6



鳴謝

Acknowledgement

義務法律顧問

周靜嫻律師
許宗盛太平紳士

Honorary Legal Advisor

Loretta C. H. Chow
Herman Hui, JP

義務商業顧問

莫華勳先生
紀治興先生
周允松先生

Honorary Business Advisors

Mr. Peter Mok
Mr. Kee Chi Hing
Mr. Winston Chow

政府部門

社會福利署康復服務
市場顧問辦事處

Government Departments

Marketing Consultancy Office
(Rehabilitation),
Social Welfare Department
Social Welfare Department
Home Affairs Bureau

社會福利署
民政事務局

商業夥伴

醫院管理局
醫院管理局健康資訊天地
北區醫院
博愛醫院
九龍醫院

Business Partners

Hospital Authority
Health InfoWorld, Hospital Authority
North District Hospital
Pok Oi Hospital
Kowloon Hospital

伊利沙伯醫院
律敦治醫院
將軍澳醫院
屯門醫院
瑪麗醫院
明愛醫院
大埔醫院
東華三院黃大仙醫院
威爾斯親王醫院
香港防癌會賽馬會癌症
康復中心
教育局九龍塘教育服務中心

Queen Elizabeth Hospital
Ruttonjee & Tang Shiu Kin Hospital
Tseung Kwan O Hospital
Tuen Mun Hospital
Queen Mary Hospital
Caritas Medical Centre
Tai Po Hospital
Wong Tai Sin Hospital, TWGHs
Prince of Wales Hospital
The Hong Kong Anti-Cancer Society,
Jockey Club Cancer Rehabilitation Centre

香港基督教女青年會
黑暗中的對話有限公司
香港人壽保險從業員協會

Education Bureau Kowloon Tong
Education Services Centre
The Hong Kong Young Women's Christian
Association
Dialogue in the Dark Ltd.
The Life Underwriters Association of
Hong Kong Ltd
St. James' Settlement
The Hong Kong Institution Of Engineers
Hong Kong Employment Development Service
Hong Kong Social Workers' General Union

聖雅各福群會
香港工程師協會
職業發展服務處
香港社會工作者總工會

《復康速遞》雜誌名譽顧問團 (排名不分先後)

方玉輝醫生
社會醫學專科醫生

Dr. Ben Fong
Specialist in Community Medicine

何惠娟女士
香港心理衛生會總幹事

Ms. Kimmy Ho
Director, The Mental Health
Association of Hong Kong

余秋良醫生
香港中西醫結合學會會長

Dr. Edwin Yu
President, Hong Kong Association for
Integration of Chinese-Western
Medicine

李俊傑醫生
養和醫院家庭醫學專科醫生

Dr. Tony Lee
Specialist in Family Medicine,
Hong Kong Sanatorium & Hospital

吳美君女士
名卓護綜合專科護理及顧問
中心顧問護士

Ms. May Ng
Nurse Consultant, Nu Pro Nurse
Clinic Centre of Excellence

吳劍華先生
香港醫院藥劑師學會及香港
藥物教育資源中心創辦人

Mr. Kim Ng
Founder, The Society of Hospital
Pharmacists of Hong Kong & Hong
Kong Drug Education Resources
Centre

吳慕賢博士
伊利沙伯醫院普通科護士學
校校長

Dr. Tina Ng
School Principal, Queen Elizabeth
Hospital School of General Nursing

高永文醫生
食物及衛生局局長

高淑蘭博士
北區醫院部門經理
(職業治療)

孫外主教授
香港中文大學中醫學院
專業顧問

莫恩榮醫生
九龍醫院胸肺內科
部門主管

莫華勳先生
新大嶼山巴士(一九七三)
有限公司執行董事

許偉智先生
葵涌醫院高級物理治療師

麥基恩醫生
資深精神科醫生

麥香煥卿女士
宏濬有限公司董事

Dr. Ko Wing Man
Chairman, The Hong Kong Anti-
Cancer Society

Dr. Flora Ko
Department Manager (Occupational
Therapy), North District Hospital

Prof. Sun Waizhu
Professional Consultant, School
of Chinese Medicine, The Chinese
University of Hong Kong

Dr. Thomas Mok
Chief of Service, Respiratory Medical
Department, Kowloon Hospital

Mr. Peter Mok
Executive Director, New Lantao Bus
Company (1973) Limited

Mr. Simon Hui
Senior Physiotherapist, Kwai Chung
Hospital

Dr. Mak Ki Yan
Specialist in Psychiatry

Mrs. Jenny Mak
Director, Master Atrium Limited



鳴謝 Acknowledgement

楊慧珍女士
瑪麗醫院高級營養師

葉維國醫生
香港中文大學內科及藥物
治療學系心臟專科醫生

黎守信醫生
資深精神科醫生

詹華強教授
香港科技大學中藥研發中心
主任

Ms. Emily Yeung
Senior Dietitian, Queen Mary Hospital

Dr. Gabriel Yip
Specialist in Cardiology, Dept. of
Medicine & Therapeutics, The
Chinese University of Hong Kong

Dr. Benjamin Lai
Specialist in Psychiatry

Dr. Karl Tsim
Director, Division of Life Science,
Center for Chinese Medicine R&D,
The Hong Kong University of Science
& Technology

劉業添醫生
將軍澳醫院內科部顧問醫生
及部門主管

盧德臨醫生
葵涌醫院行政總監

龐曹聖玉女士
香港護理及衛生管理學院
院長

Dr. Lau Ip Tim
Consultant and Chief of Service,
Department of Medicine,
Tseung Kwan O Hospital

Dr. Lo Tak Lam
Hospital Chief Executive,
Kwai Chung Hospital

Ms. Alice Tso
President, The Hong Kong College
of Nursing and Health Care
Management

《復康速遞》雜誌封面故事人物 (排名不分先後)

梁卓偉教授
香港大學醫學院院長

施永青先生
中原集團董事

梁智仁教授
前醫院管理局主席

Mr. Gabriel Leung
Dean, Li Ka Shing Faculty of Medicine,
The University of Hong Kong

Mr. Shih Wing Ching
Director, Centaline Group

Prof. John Leong
Former Chairman, Hospital Authority

陳明恩小姐
演藝人士

C AllStar
樂隊

Ms. Corinna Chamberlain
Artist

C AllStar
Band

《復康速遞》雜誌作者及編輯團隊 (排名不分先後)

醫院管理局
醫院管理局健康資訊天地
香港防癌會
香港職業治療學會

香港心理衛生會社區教育部

香港中文大學中醫學院

香港新聲會
香港視網膜病變協會

再生會
**香港黏多醣症暨罕有遺傳病
互助小組**

活得妙成年關注協會

Hospital Authority
Health Info World, Hospital Authority
The Hong Kong Anti-Cancer Society
**Hong Kong Occupational Therapy
Association**

**Division of Community Education,
The Mental Health
Association of Hong Kong**

**School of Chinese Medicine, The
Chinese University of Hong Kong**
The New Voice Club of Hong Kong

Retina Hong Kong

Regeneration Society
**Hong Kong Mucopolysaccharidoses
& Rare Genetic Diseases Mutual Aid
Group**

ADDult Value Association

李浩宏醫師
註冊中醫生

劉錦偉醫生
註冊中醫師

吳梓新醫師
香港中文大學中醫學院講師

李宇銘博士
香港中文大學中醫學院講師

張宏偉博士
香港中文大學中醫學院
副研究員

張海藝醫師
香港中文大學醫學院
中西醫結合醫務中心

Dr. Lee Ho Wang
Registered Chinese Medicine
Practitioner

Dr. Lau Kam Wai
Registered Chinese Medicine
Practitioner

Dr. Ng Chi Sun
Lecturer, School of Chinese
Medicine, The Chinese University of
Hong Kong

Dr. Lee Yu Ming
Lecturer, School of Chinese
Medicine, The Chinese University of
Hong Kong

Dr. Zhang Hongwei
Research Associate, School of
Chinese Medicine, The Chinese
University of Hong Kong

Dr. Cheung Hoi Ngai
Integrative Medical Centre, Faculty of
Medicine, The Chinese University of
Hong Kong

劉玉麟醫生

香港中文大學醫學院中西醫
結合醫務中心副醫務主管

黃麗詩醫生

北區醫院內分泌科專科醫生

張晉元博士

香港理工大學專業進修學院
講師

謝俊仁醫生

醫院管理局臨床倫理委員會
主席

林庭璋小姐

香港科技大學中藥研發中心

遊子覺醫生

臨床腫瘤專科醫生

王振宇醫生

腸胃肝臟專科醫生

陳林醫生

威爾斯親王醫院臨床腫瘤科

宋崧醫生

東區尤德夫人那打素醫院
臨床腫瘤科

李陳麗裳女士

前東區尤德夫人那打素醫院
營養部部門經理

周倩明醫生

臨床腫瘤專科醫生

蕭粵中醫生

北區醫院急症室顧問醫生

劉建明先生

大埔醫院一級物理治療師

許碧斯小姐

雅麗氏何妙齡那打素醫院
一級物理治療師

黃筱儀小姐

威爾斯親王醫院
一級物理治療師

龍彥平先生

沙田醫院物理治療師

Dr. Lau Yuk Lun

Deputy Medical Director, Integrative
Medical Centre, Faculty of Medicine,
The Chinese University of Hong Kong

Dr. Wong Lai Sze

Associate Consultant, Department of
Medicine, North District Hospital

Dr. Simon Cheung

Lecturer, The School of Professional
Education and Executive
Development of The Hong Kong
Polytechnic University

Dr. Tse Chun Yan

Chairman, Hospital Authority Clinical
Ethics Committee, Hospital Authority

Ms. Candy Lam

Center for Chinese Medicine R & D,
The Hong Kong University of Science
and Technology

Dr. Yau Tsz Kok

Specialist in Clinical Oncology

Dr. Wong Chun Yu

Specialist in Gastroenterology

Dr. Chan Lam

Department of Clinical Oncology,
Prince of Wales Hospital

Dr. Soong Sung

Department of Clinical Oncology,
Pamela Youde Nethersole Eastern
Hospital

Mrs. Li Chan Lai Sheung

Former Manager, Dietetic
Department, Pamela Youde
Nethersole Eastern Hospital

Dr. Chow Sin Ming

Clinical Oncologist

Dr. Axel Siu

Consultant, Accident & Emergency
Department, North District Hospital

Mr. Lau Kin Ming

Physiotherapist I, Physiotherapy
Department, Tai Po Hospital

Ms. Hui Pik Si

Physiotherapist I, Alice Ho Miu Ling
Nethersole Hospital, Tai Po

Ms. Wong Shiu Yee

Physiotherapist I, Physiotherapy
Department, Prince of Wales Hospital

Mr. Lung Yim Ping

Physiotherapist, Shatin Hospital

張傑醫生

皮膚科專科醫生

羅兆倫小姐

英國註冊音樂治療師

陳頌瑩小姐

香港醫院藥劑師學會

張翠芬小姐

註冊營養師

林思為小姐

註冊營養師

劉碧珊小姐

註冊營養師

梁淑卿小姐

註冊營養師

曾媚小姐

香港心理衛生會行政主任

鍾偉成先生

董事總經理

李春小姐

總編輯

Cynthia

特約記者

關詠賢小姐

特約記者

邱妙勤小姐

特約記者

陳安琪小姐

特約記者

Natalie

攝影師

Visionaire

發行及印刷

Dr. Jacky Chang

Specialists in Dermatology

Ms. Fanny Lo

Registered Music Therapist

Ms. Amy Chan

The Society of Hospital Pharmacists
of Hong Kong

Ms. Lorena Cheung

Registered Dietitian

Ms. Sylvia Lam

Registered Dietitian

Ms. Lau Pik Shan

Registered Dietitian

Ms. Sallie Leung

Registered Dietitian

Ms. Echo Tsang

Administrative Officer

Chung Wai Shing

Managing Director

Ms. Printemps Lee

Chief Editor

Cynthia

Freelance Reporter

Ms. Janet Kwan

Freelance Reporter

Ms. Miu Yau

Freelance Reporter

Ms. Angel Chan

Freelance Reporter

Natalie

Photographer

Visionaire

Publishing & Printing



聯絡我們 Contact Us

總公司

九龍觀塘鴻圖道 16 號志成工業大廈 12 樓 1206 室
電話 : 2710 8860 傳真 : 2710 8210

Head Office

Room 1206, 12/F, Houtex Industrial Building, 16 Hung To Road,
Kwun Tong, Kowloon
Tel: 2710 8860 Fax: 2710 8210

「卓思廊」便利店

「Cheers Gallery」 Convenience Stores

「卓思廊」北區醫院 24 小時便利店

新界粉嶺保健路 9 號北區醫院地下大堂
電話 : 2669 7959 傳真 : 2669 7959

「Cheers Gallery」 North District Hospital Convenience Store (24 hrs)

Shop A, G/F Lobby, North District Hospital, 9 Po Kin Road,
Fan Ling, N.T.
Tel: 2669 7959 Fax: 2669 7959

「卓思廊」威爾斯親王醫院便利店

新界沙田銀城街 30-32 號威爾斯親王醫院
李嘉誠專科診所北翼地下
電話 : 2645 0333 傳真 : 2645 0333

「Cheers Gallery」 Prince of Wales Hospital Convenience Store

G/F, Li Ka Shing Specialist Clinic (North Wing),
Prince of Wales Hospital, 30-32, Ngan Shing Street, Shatin, N.T.
Tel: 2645 0333 Fax: 2645 0333

「卓思廊」律敦治醫院便利店

香港灣仔皇后大道東 266 號律敦治醫院地庫 3 樓
電話 : 2836 0780 傳真 : 2836 0780

「Cheers Gallery」 Ruttonjee Hospital Convenience Store

LG3, Ruttonjee Hospital, 266 Queen's Road East, Wan Chai, H.K.
Tel: 2836 0780 Fax: 2836 0780

「卓思廊」大埔醫院便利店

新界大埔全安路 9 號大埔醫院大堂地下
電話 : 2607 6540 傳真 : 2607 6540

「Cheers Gallery」 Tai Po Hospital Convenience Store

G012, Main Block, Tai Po Hospital, 9 Chuen On Road, Tai Po, N.T.
Tel: 2607 6540 Fax: 2607 6540

「卓思廊」復康用品專賣店及復康生活幹線 「Cheers Gallery」 Rehab Shops & Rehab Links

「卓思廊」博愛醫院復康用品專賣店

新界元朗坳頭博愛醫院中座地下大堂
電話 : 2470 7065 傳真 : 2470 7026

「Cheers Gallery」 Pok Oi Hospital Rehab Shop

G/F Lobby, Central Wing, Pok Oi Hospital, Au Tau, Yuen Long, N.T.
Tel: 2470 7065 Fax: 2470 7026

「卓思廊」將軍澳醫院復康用品專賣店

九龍將軍澳坑口寶寧里 2 號將軍澳醫院 1 樓
電話 : 2208 0456 傳真 : 2209 4764

「Cheers Gallery」 Tseung Kwan O Hospital Rehab Shop

1/F, Tseung Kwan O Hospital, 2 Po Ning Lane,
Tseung Kwan O, N.T.
Tel: 2208 0456 Fax: 2209 4764

「卓思廊」屯門醫院復康用品專賣店

新界屯門青松觀道屯門醫院主座地下大堂 6 號舖
電話 : 2463 1905 傳真 : 2463 1906

「Cheers Gallery」 Tuen Mun Hospital Rehab Shop

Shop 6, G/F Lobby, Tuen Mun Hospital, Tsing Chung Koon Road,
Tuen Mun, N.T.
Tel: 2463 1905 Fax: 2463 1906

「卓思廊」九龍醫院復康用品專賣店

九龍亞皆老街 147A 九龍醫院正座地下
電話 : 2244 3133 傳真 : 2244 3122

"Cheers Gallery" Kowloon Hospital Rehab Shop

G/F, Main Block, Kowloon Hospital, 147A Argyle Street, Kowloon
Tel: 2244 3133 Fax: 2244 3122

「卓思廊」伊利沙伯醫院復康用品專賣店

九龍加士居道 30 號伊利沙伯醫院 D 座地下底層大堂
電話 : 3586 1525 傳真 : 3586 1526

"Cheers Gallery" Queen Elizabeth Hospital Rehab Shop

LG/F, Block D, Queen Elizabeth Hospital,
30 Gascoigne Road, Kowloon
Tel: 3586 1525 Fax: 3586 1526

「卓思廊」香港防癌會癌症康復中心復康用品專賣店

香港黃竹坑南朗山道 30 號香港防癌會賽馬會癌症康復中心 6 樓
電話 : 2552 7061 傳真 : 2552 7061

"Cheers Gallery" The Hong Kong Anti-Cancer Society Cancer Rehabilitation Centre Rehab Shop

6/F, The Hong Kong Anti-Cancer Society Jockey Club Cancer
Rehabilitation Centre, No. 30 Nam Long Shan Road,
Wong Chuk Hang, Hong Kong
Tel: 2552 7061 Fax: 2552 7061

「卓思廊」瑪麗醫院復康生活幹線

香港薄扶林道 102 號瑪麗醫院 K 座地下 B 舖
電話 : 2762 2728 傳真 : 2762 2728

"Cheers Gallery" Queen Mary Hospital Rehab Links

Shop B, G/F, Block K, Queen Mary Hospital,
102 Pokfulam Road, Hong Kong
Tel: 2762 2728 Fax: 2762 2728

「卓思廊」明愛醫院復康生活幹線

九龍深水埗永康街 111 號明愛醫院懷明三樓
電話 : 2242 6313 傳真 : 2242 6312

"Cheers Gallery" Caritas Medical Centre Rehab Links

3/F Wai Ming Block, Caritas Medical Centre,
111 Wing Hong Street, Kowloon
Tel: 2242 6313 Fax: 2242 6312

「復康速遞」直銷業務

"Rehab Express" Direct Sales Service

「復康速遞」訂購熱線

九龍觀塘鴻圖道 12 號精棉工業大廈 3 樓 A 室
訂購熱線 : 8206 6160 訂購傳真 : 2710 8322
網站訂購 : www.rehabexpress.com.hk

"Rehab Express" Hotline Ordering

Room A, 3/F, Gemmy Factory Building, 12 Hung To Road,
Kwun Tong, Kowloon.
Order Hotline: 8206 6160 Order Fax: 2710 8322
Order Online: www.rehabexpress.com.hk

《復康速遞》雜誌

九龍觀塘鴻圖道 16 號志成工業大廈 12 樓 1206 室
電話 : 2710 8860 傳真 : 2710 8210

"Rehab Express" Magazine

Room 1206, 12/F, Houtex Industrial Building, 16 Hung To Road,
Kwun Tong, Kowloon
Tel: 2710 8860 Fax: 2710 8210

餐飲業務

Catering Service

北區醫院「Cheers Café」

新界粉嶺保健路 9 號北區醫院地下大堂
電話 : 2672 9733 傳真 : 2672 9733

"Cheers Café" North District Hospital

Shop B, G/F Lobby, North District Hospital, 9 Po Kin Road,
Fan Ling, N.T.
Tel: 2672 9733 Fax: 2672 9733

教育局教育服務中心「Cheers Café」

九龍塘沙福道 19 號教育局九龍塘教育服務中心東座平台 02 室
電話 : 2794 1101 傳真 : 2794 1102

"Cheers Café" Education Bureau Education Services Centre

EP02, Education Bureau Kowloon Tong Education Services
Centre, 19 Suffolk Road, Kowloon Tong, Kowloon
Tel: 2794 1101 Fax: 2794 1102



聯絡我們 Contact Us

屯門醫院 Cheers Bakery「喜点」

新界屯門青松觀道屯門醫院主座地下大堂 E 號舖
電話 : 2463 6871 傳真 : 2463 6872

"Cheers Bakery" Tuen Mun Hospital

Shop E, G/F Lobby, Tuen Mun Hospital, Tsing Chung Koon Road,
Tuen Mun, N.T.
Tel: 2463 6871 Fax: 2463 6872

黃大仙醫院「Cheers Cafe」

九龍黃大仙沙田坳道 124 號東華三院黃大仙醫院 A 座 1 樓
電話 : 2404 0760 傳真 : 2690 5090

"Cheers Cafe" Wong Tai Sin Hospital

Level 1, Block A, TWGHs Wong Tai Sin Hospital, 124 Shatin Pass
Road, Wong Tai Sin, Kowloon
Tel: 2404 0760 Fax: 2690 5090

機構消費計劃

Organizational Consumption Scheme

醫院管理局職員合作社

九龍亞皆老街 147B 醫院管理局大樓 207-S 室
電話 : 2300 6981 傳真 : 2194 6867

Hospital Authority Staff Co-op Shop

Room 207S, Hospital Authority Building, 147B Argyle Street,
Kowloon.
Tel: 2300 6981 Fax: 2194 6867

「悦購点」(南京街)

九龍佐敦南京街 12 號地舖 (伊利沙伯醫院小巴總站)
電話 : 2264 8027 傳真 : 2264 8029

Cheers Point @ Nanking Street

G/F, 12 Nanking Street, Jordan, Kowloon
(Queen Elizabeth Hospital mini-bus terminal)
Tel: 2264 8027 Fax: 2264 8027

「悦購点」(中半山)

香港麥當勞道一號香港基督教女青年會總會所大堂
電話 : 2445 6713 傳真 : 2624 6865

"Cheers Point @ Mid-Levels

G/F, Hong Kong Young Women's Christian Association
Headquarters, 1 MacDonnell Road, Hong Kong
Tel: 2445 6713 Fax: 2624 6865

「悦購網」

www.cheerspointnet.com.hk

「卓思」市場推廣服務

"Cheers" Marketing & Promotion Service

九龍觀塘鴻圖道 16 號志成工業大廈 12 樓 1206 室
電話 : 2710 8860 傳真 : 2710 8210
Room 1206, 12/F., Houtex Industrial Building, 16 Hung To Road,
Kwun Tong, Kowloon
Tel: 2710 8860 Fax: 2710 8210

傳單速遞

九龍觀塘鴻圖道 16 號志成工業大廈 12 樓 1206 室
電話 : 2710 8860 傳真 : 2710 8210

Handbill Service

Room 1206, 12/F., Houtex Industrial Building, 16 Hung To Road,
Kwun Tong, Kowloon
Tel: 2710 8860 Fax: 2710 8210

清潔業務

Cleaning Service

九龍觀塘鴻圖道 16 號志成工業大廈 12 樓 1206 室
電話 : 2710 8860 傳真 : 2710 8210

Room 1206, 12/F., Houtex Industrial Building, 16 Hung To Road,
Kwun Tong, Kowloon
Tel: 2710 8860 Fax: 2710 8210

香港心理衛生會

www.mhahk.org.hk

「明途聯繫」有限公司

www.mentalcare.com.hk

