

開啟持續增長新篇章 Unveiling a New Chapter for Sustainable Growth

17-18年報
ANNUAL REPORT





目錄 CONTENT

04 ▶ 願景、使命與核心價值	Vision, Mission & Core Values
05 ▶ 主席序言	Foreword by the Chairman
06 ▶ 行政報告	Executive Report
08 ▶ 組織架構	Organization Chart
09 ▶ 員工團隊	Staff Team
10 ▶ 社會效益亮點	Social Impact Highlight
11 ▶ 尊嚴與未來	Dignity & Future
12 ▶ 創業十五週年紀念花絮	15th Anniversary Celebration Titbits
20 ▶ 業務版圖	Business Presence
22 ▶ 主要業務	Major Operations
36 ▶ 員工參與及成就	Employee Participation & Achievement
42 ▶ 交流分享及參觀	Sharing & Visits
48 ▶ 財務回報 2017-2018	Financial Return 2017-2018
49 ▶ 核數報告 2017-2018	Audit Report 2017-2018
51 ▶ 鳴謝	Acknowledgement
55 ▶ 聯繫我們	Contact Us

願景、使命與核心價值

Vision, Mission & Core Values

公司簡介

明途聯繫有限公司成立於 2002 年，以社會企業模式經營便利店、復康用品專賣店、「復康速遞」直銷業務、市場推廣服務、網購、餐飲業務、清潔服務及機構消費計劃，以商業營運模式致力為殘疾人士及弱勢社群創造就業機會，更有尊嚴地融入社會工作。

Company Brief

MentalCare Connect Co Ltd was established in 2002. We create job opportunities for the disabled and disadvantaged people via operating social enterprises through the business such as Convenience Stores, Rehab Shops, "Rehab Express" Direct Sales Services, Marketing & Promotion Service, Online Shopping Platform, Catering Service, Cleaning Service and Organizational Consumption Project.

願景

每一個人都應該擁有平等且具尊嚴的就業機會。

Vision

Everyone should have an equal and dignified employment opportunity.

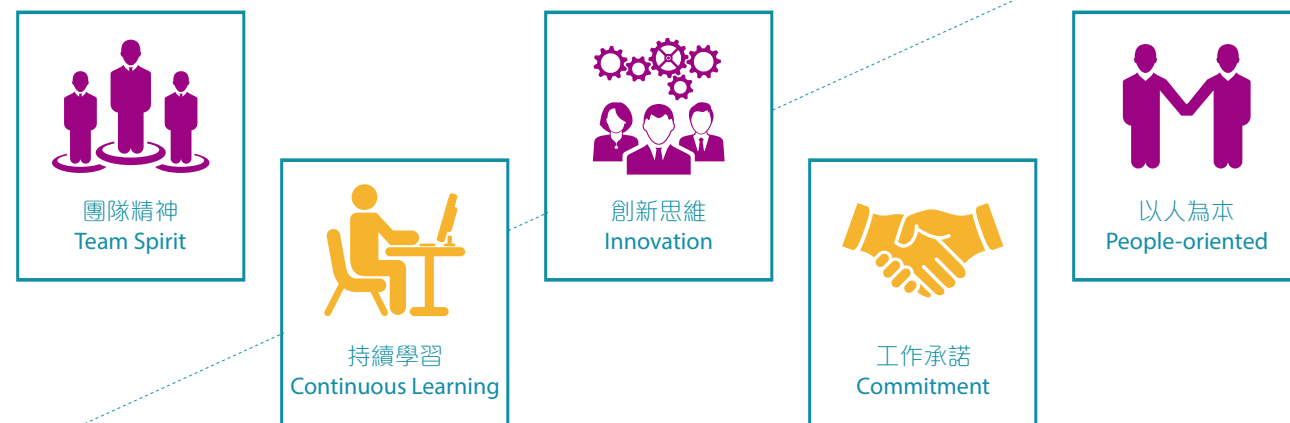
使命

- 以社會企業模式為殘疾人士及弱勢社群創造具尊嚴的就業機會，並且促進工作間的精神健康；
- 推動社會企業的可持續發展和推廣「幫襯社企」運動；
- 經營溢利會全數重投於業務的未來發展。

Mission

- To create employment opportunities with dignity for the disabled and disadvantaged people through social enterprise model and further promote the mental health in workplace;
- To enable the self-sustainability of social enterprises and promote "Buy Social" Movement;
- All profit is reinvested in the future business development.

核心價值 Core Values



主席序言

Foreword by the Chairman

黎守信醫生

明途聯繫有限公司董事會主席

Dr. Benjamin Lai

Chairman
MentalCare Connect Company Limited



董事會以振奮歡欣的心情與「明途聯繫」員工和其他持份者分享過去一年公司業務的長足增長和發展。

過去一年，「明途聯繫」的營業額達一億四千五百萬港元，比去年整體增長約為 20%，年內公司淨利潤約為一百萬港元。當中復康產品，便利店，餐飲服務和機構消費計劃的銷售額持續上升。在 2017-18 年期間，公司獲得及更新了共 21 個店舖專營權。以現時「明途聯繫」的市場地位，公司既增加了產品系列及規模，配以合理的價格及提供高質量的服務，公司將能夠更好地應對市場不斷的挑戰和持續的競爭，實現為殘疾人士提供就業和培訓機會的經營目標。

令人喜悅的是，不少非政府機構和社會企業與我們攜手合作，以共同推動社會企業的目標，為香港的殘疾人士和弱勢社群爭取福利。公司除與該些機構建立更緊密合作關係外，亦會尋找合適的機會來擴充在社區的業務。

在本財政年度，「明途聯繫」員工總數為 179 人，約 67% 的員工屬於弱勢社群。公司並於過去一年為 280 人提供了培訓機會。

董事會謹此感謝民政事務局、社會福利署、醫院管理局、供應商，名譽顧問及其他持份者對「明途聯繫」的持續支持及意見。董事會亦向鍾偉成先生及其團隊為公司付出的努力，達致公司的成功表示謝意。我亦感激董事會成員對公司作出卓越的建議和不懈的支持。

The Board of Directors is pleased to share the excitement and joy with the staff of MentalCare Connect and other stakeholders on the exceptional growth and development of the Company over the past year.

The turnover of the business of the Company has grown to a hundred and forty five million Hong Kong dollars in the year with an overall growth of around 20% over the previous year and the net profit of the Company in the year is around one million Hong Kong dollars. There has been continuous growth in turnover in sales of rehabilitation products, convenience stores, catering service and the organization consumption products. Over the past year the Company has been able to obtain/renew licences for 21 of our stores. The Company is in a favorable position to

enhance the range of our products with a reasonable price, and to provide a high quality of service to those in need of our products. The Company will be in a good position to face the rising challenges and continuing competition in the market and to pursue our goals to provide job and training opportunities for the disabled persons.

It is pleasing to learn that a number of non-government organizations and social enterprise have joined hands with us in joint projects with the shared goal of the promotion of social enterprise for the benefit of the disabled and disadvantaged persons in Hong Kong. While the Company will pursue further collaboration with NGOs and social enterprise, it will continue to look for suitable opportunities to expand its business in the community.

At the end of the fiscal year the total number of staff is 179, and around 67% of our staff belongs to the disadvantaged group. The Company has also provided training opportunities for 280 persons over the past year.

The Board will like to thank the Home Affairs Bureau, Social Welfare Department, the Hospital Authority, suppliers, honorary advisors and other stakeholders for their continual support and advice to the Company. The Board is grateful to Mr. Chung Wai Shing and his staff for their dedication and hard work for the success of the Company. I wish to thank members of the Board for their insightful advice and untiring support to the Company.

業務報告 Executive Report

鍾偉成先生

明途聯繫有限公司行政總裁

Chung Wai Shing

Chief Executive Officer
MentalCare Connect Company Limited

履行核心使命

至 2018 年 3 月止，「明途聯繫」營運中的社企項目達 30 個，共聘用 179 位僱員，其中 120 名為殘疾人士，是年度各機構轉介到公司轄下店舖實習的學員達 280 人次。



為了推廣「幫襯社企」運動，公司運用自身的資源和業務平台分別推動「社企淘」及「曲奇公社」兩項計劃。「社企淘」暫有十四間社企加盟，而「曲奇公社」亦協同了 4 家社企製作曲奇禮盒，在「明途聯繫」的策動和推廣下，共出售近 3,000 盒曲奇，口碑良好。

業務發展

很喜歡一位殘疾僱員分享的金句，「路雖難走，但欄杆處處」，十六年來「明途聯繫」走的社企路雖然艱辛，但在不同的階段有母會和公營部門、政府的種籽基金、願意拼搏的員工和背後發功的董事會成員給予公司無比的信任和支持！

十五周年的紀念酒會，二百多位來自政府部門及公營機構、社企界、社福界，大小供應商及學院的朋友濟濟一堂，見證「明途聯繫」在這十五年間怎樣茁壯成長，在「明途聯繫」工作的殘疾僱員怎樣經歷具尊嚴的工作和生活。作為香港最具規模的社會企業，未來要走的路已不止於為弱勢社群創造就業機會，如何透過「明途聯繫」的營運經驗、產業優勢和銷售平台去推動「幫襯社企」的運動，建構共享價值的嶄新平台將是公司的重大挑戰！

財務表現

2017-2018 年度，公司收入為 HK\$144,741,133，其中「創業展才能」計劃及「伙伴倡自強」社區協作計劃合共資助 HK\$1,584,043 作為多項社企項目的種籽基金，約佔整體收入的 1.09%。公司已是第六年錄得盈利，更是公司成立以來第一次需要納稅，稅後盈利達 HK\$996,197。營運收入大增主要受惠於瑪麗醫院「卓思廊」的擴充營業和三間街舖的收入逐漸提升，加上去年成功投得多項回歸二十周年福袋合約，在營業額帶動下，盈利也有可觀增長。

I really fond of a motto recently shared by my disabled staff - "It is not an easy road but railings everywhere." It is not inevitable for MentalCare Connect's social enterprise development in these 16 years. Fortunately there are endless trusts and supports from its mother organization and public organizations at different developmental stages, as well as the grant sponsorship from government, the hardworking staff and the trust of the Board of Directors.

The 15th Anniversary Cocktails Party invited more than 200 working partners from Government Departments, public organizations, social enterprise sector, social welfare sector, suppliers of different scales and tertiary institutions, witnessed the growth and development of "MentalCare Connect" in these years. They can also see the way how our disabled staff can enjoy a dignified employment and living. The development path of "MentalCare Connect" will not be limited to just creating employment opportunities for disabled and disadvantaged groups of people. The next stage of development will be the challenge of constructing a new platform of shared value, via utilizing MentalCare Connect's operating experience, competitive advantages and sales platform to promote "Buy Social" Movement.

Financial Performance

In 2017-2018, the Company's revenue was HK\$144,741,133. Among them, "Enhancing Employment of People with Disabilities through Small Enterprise" Project and the "Enhancing Self-Reliance Through District Partnership Programme" funded HK\$1,584,043 as the grant sponsorship and accounted for 1.09% of total income. "MentalCare Connect" has recorded profit for six years in a row and it was the first year for the Company to pay taxes. The net operating profit after tax was HK\$996,197. The increase in operating income was mainly attributable to the expansion of "Cheers Gallery" Queen Mary Hospital Rehab Links and the gradual business pick-up from our three street front shops. In addition, winning of several bids in preparing fortune bags for celebrating the 20th anniversary of the establishment of the Hong Kong Special Administrative Region was also one of the major reasons.

Core Mission Implementation

By the end of March 2018, a total of 30 Social Enterprise projects were being operated by "MentalCare Connect". A total of 179 staff were employed, 120 of whom were disabled. 280 on-job training were offered to trainees referred by different organizations.

In order to promote the "Buy Social" Movement, "MentalCare Connect" utilized its resources and business platform to promote "SE Mall" and "Cookies Co-op". A total of 14 social enterprises joined "SE Mall". 4 social enterprises were coordinated to produce cookie gift sets. Approximately 3,000 boxes of those gift set were sold and widely received by the public.

Business Development

"MentalCare Connect" had ceased the operations of two projects which had long run at deficit, including "Cheers Gallery" The Hong Kong Anti-Cancer Society Cancer Rehabilitation Centre Rehab Shop and "Cheers Point" @ Mid-levels. All the staff working in those two shops were redeployed to other business. Operating at street front shop is the Company's long term development strategy. It is understood that the break-even period of street front shops would take longer time, with reference to our experience. The required sales and customer service know-how were more sophisticated. The Company will thus strengthen its training for elevating the customer satisfaction and loyalty.

30 participating organizations had joined the Organizational Consumption Project, with the number of members / staff exceeded 350,000. There would be significant growth in business with the increase of upcoming organizations.

Future

"MentalCare Connect" would enter into a new era of development per our slogan mentioned. The optimization of our business portfolio and even entering into a new market will bring a major challenge to me and my team. In order to synergize the online and offline sales strategies, the Company would allocate more resources to strengthen the current online platform and improve the logistic system for rendering more privileges to our customers. On the other hand, "MentalCare Connect" would seek more business opportunities for creating employment for disabled and disadvantaged people by sourcing street front shops for the retail and catering businesses and bidding for hospital retail opportunities, so as to comply with "Mission 2020".

My heartfelt thanks was gone to my colleagues for their dedication in the past year and they have created an unprecedented success to the Company. At the same time, I would like to express my deep gratitude to the members of the Board of Directors for their valuable guidance.

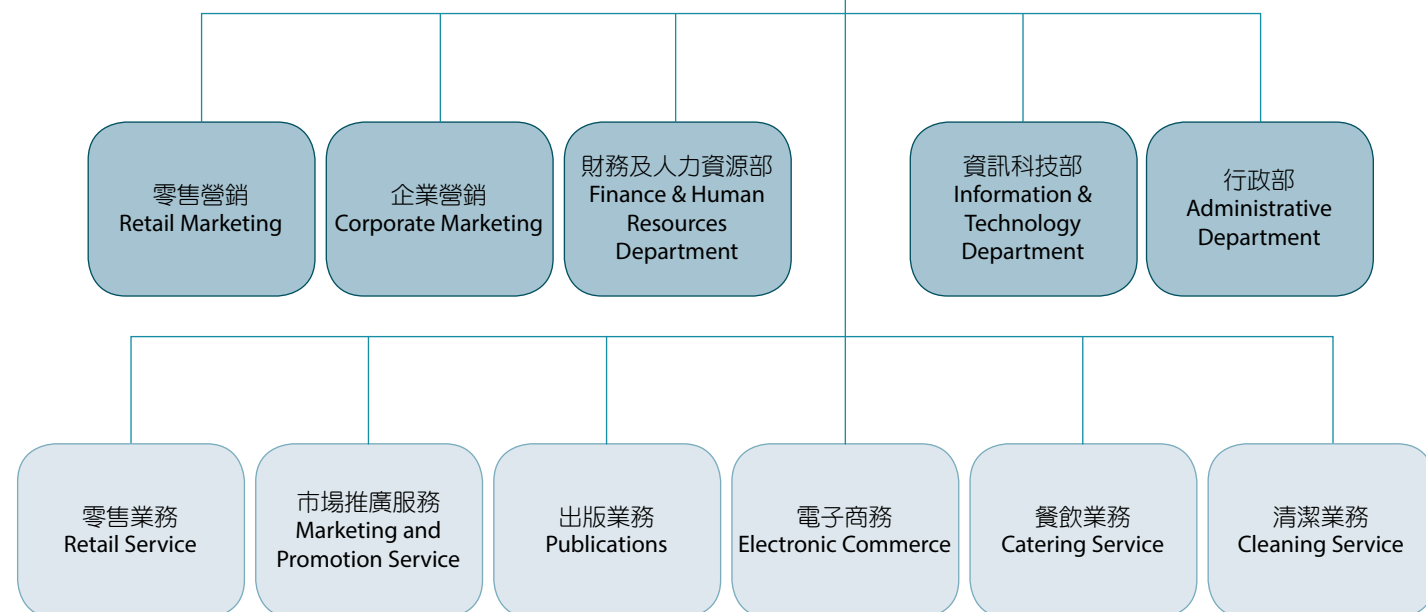
組織架構 Organization Chart

香港心理衛生會執行委員會
Executive Committee of The Mental Health Association of Hong Kong

明途聯繫有限公司董事會
Board of Directors of MentalCare Connect Co., Ltd

董事會主席 : 黎守信醫生
Chairman : Dr. Benjamin Lai
董事 : 盧德臨醫生 梁士雄先生 黃銘光醫生 潘佩璆醫生
Directors : Dr. Lo Tak Lam Mr. Carlos Leung Dr. Wong Meng Kong Dr. Pan Pey Chyou
公司義務秘書 : 鍾偉成先生
Hon. Secretary : Mr. Chung Wai Shing
列席 : 香港心理衛生會總幹事何惠娟女士
In attendance : Ms. Kimmy Ho Wai Kuen (Director of MHAHK)

明途聯繫有限公司
MentalCare Connect Co. Ltd.
行政總裁：鍾偉成先生
Mr. Chung Wai Shing (Chief Executive Officer)



員工團隊 Staff Team

行政總裁 Chief Executive Officer

鍾偉成先生 Mr. Chung Wai Shing

高級經理 Senior Managers

吳秀雯小姐 (企業營銷) Ms. Fanny Ng (Corporate Marketing)
洪淑娟小姐 (零售營銷) Ms. Edith Hung (Retail Marketing)
黃子卓先生 (行政) Mr. Dobe Wong (Administration)
黃秀花小姐 (財務及人力資源) Ms. Christine Wong (Finance and Human Resources)

業務經理 Business Managers / 助理業務經理 Assistant Business Manager

陳彩嫻小姐 Ms. Aggie Chan
蔡曉東先生 Mr. Tony Choy
王國榮先生 Mr. Dennis Wong
陳玉鳳小姐 Ms. Corinna Chan
鄭家俊先生 Mr. Kevin Cheng

企業營銷 / 零售營銷 / 財務及人力資源 / 行政 / 資訊科技 / 物流主任 Corporate Marketing/Retail Marketing/Finance and Human Resources/Administration/ Information Technology/Logistic Officer

鍾妙瑩小姐 Ms. Miu Chung 陳倩嫻小姐 Ms. Annis Chan 陳震晞先生 Mr. Hayson Chan
樊燕玲小姐 Ms. Anita Fan 李詩敏小姐 Ms. Mandy Lee 李 春小姐 Ms. Printemps Lee
李寶雯小姐 Ms. Amy Li 梁孟威先生 Mr. Barry Leung 關嘉穎小姐 Ms. Wing Kwan
曾至全先生 Mr. Tsang Chi Chuen 劉家業先生 Mr. Tony Lau 伍偉照先生 Mr. Wilfred Ng
王佩珊小姐 Ms. Rosetta Wong 翁慧兒小姐 Ms. Cherry Yung 譚文婷小姐 Ms. Yuko Tam

店務主任

盧靜寧小姐 Ms. Ning Loo 李 萍小姐 Ms. Don Lee 李玉英小姐 Ms. Lee Yuk Ying
倪鎮惠先生 Mr. Amen Ngai 何美蓮小姐 Ms. Ho Mei Lin 林映余小姐 Ms. Jenny Lam
黃少娟小姐 Ms. Wendy Wong 吳婉兒小姐 Ms. Shirley Ng 謝寶珍小姐 Ms. Cat Tse
關景雲先生 Mr. Frankie Kwan 何茂娥小姐 Ms. May Ho 林月娥小姐 Ms. Lam Yuet Ngor
文玲君小姐 Ms. Man Ling Kwan 潘志偉先生 Mr. Pan Chi Wai 紀式雄先生 Mr. Kei Sik Hung
劉景浩先生 Mr. Ken Lau 黃桂萍小姐 Ms. May Wong 周秀娟小姐 Ms. Chow Sau Kuen
馮成滔先生 Mr. Roy Fung 李偉光先生 Mr. Li Wai Kwong 林 妹小姐 Ms. Sae-Lim Muay

社會效益亮點 (2002-2018)

Social Impact Highlight (2002-2018)



30

營運中社企項目總數
No. of Operating
SE projects



1,746

歷年弱勢僱員數目 (年度累計)
No. of Accumulated Disabled
Employees



912,626,995

歷年營運收入
Accumulated
Total Revenue



2,494

歷年僱員數目 (年度累計)
No. of Accumulated
Employees



20,541,322

歷年政府種籽基金資助
Accumulated Grant
from Government



75,624,788

歷年發放給弱勢僱員薪酬
Accumulated Salary to
Disabled Employees



84,724,000

歷年減省社會成本
Reduced Social Cost
Over the years



1,380,000

《復康速遞》雜誌讀者
人數 (63 期累計)
No. of Readers of Rehab
Express Magazine
(Accumulated for 63 issues)



1,527,900

《復康速遞》雜誌對外
慈善贊助 (63 期累計)
Rehab Express Magazine
Sponsored for Charity
(Accumulated for 63 issues)



3,455,916

歷年採購社企及
庇護工場產品
Responsible Procurement
for SE and Sheltered
Workshops Over the Years



280 (2017-2018)

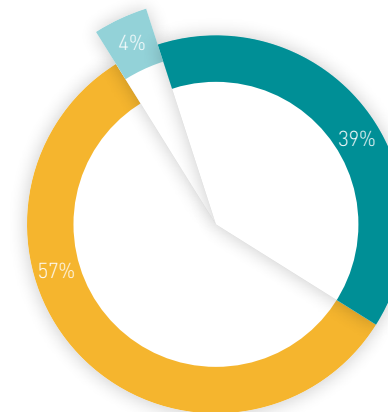
為殘疾人士提供學員
實習崗位數目
No. of trainees provided to
disabled persons

尊嚴與未來 Dignity & Future

為了解精神病康復僱員在加入「明途聯繫」後於生活上帶來什麼改變，「明途聯繫」於2017年7月進行了員工滿意度調查，調查結果重點如下：

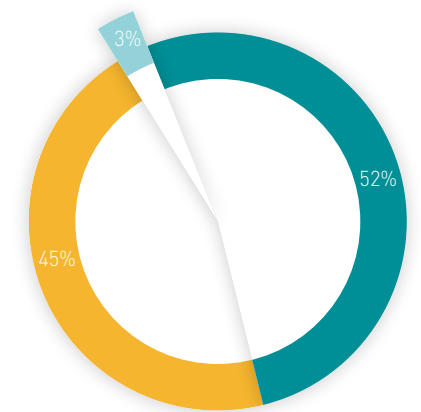
"MentalCare Connect" cares about our disabled employees' changes in living, particularly after they got the job. The Company conducted a staff satisfaction survey and collect the information in July 2017. The major finding can be summarized as follows:

加入「明途聯繫」後的復發情況
Recurrence after joining "MentalCare Connect"



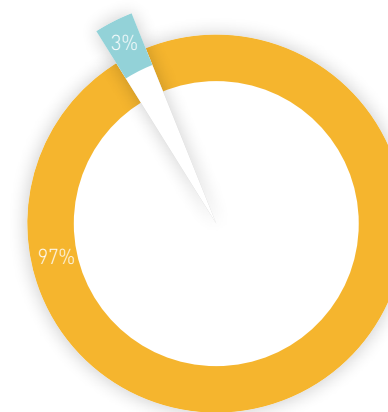
增加 Increased 4% 減少 Reduced 57% 不變 Unchanged 39%

加入「明途聯繫」後，相隔每次的覆診時間
After joining "MentalCare Connect", frequency
for follow-up consultation



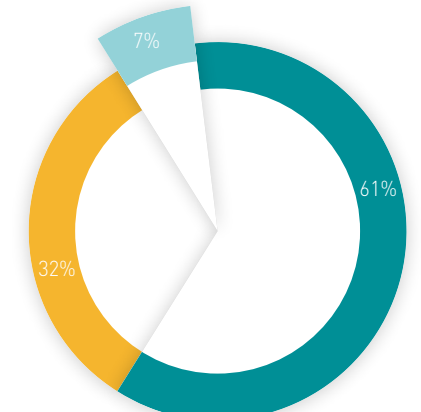
減少 (精神情況不穩) Reduced (mental status unstable) 3% 增加 (精神情況穩定) Increased (mental status stable) 45% 不變 Unchanged 52%

工作怎樣影響你的生活？
How does work affect your life?



負面影響 Negative impact 3% 正面影響 Positive impact 97%

工作怎樣影響你的生活？(根據正面影響)
How does work affect your life? (Based on
positive impact)



可學習新技能 Learn new technique 7% 思想變得正面及樂觀 Becomes positive and optimistic 32% 改善生活質素 Improve living quality 61%

創業十五週年 紀念花絮

15th Anniversary Celebration Titbits



10-11/2017 創業 15 週年回饋大抽獎 15th Anniversary Lucky Draw

適逢「明途聯繫」創業十五週年，為答謝社會大眾及客戶的長期支持，公司於 2017 年 10 月 1 日至 2017 年 11 月 30 日期間舉辦「創業 15 週年回饋大抽獎」。

In recognition of the fifteenth anniversary of "MentalCare Connect", the Company organized "15th Anniversary Lucky Draw". The event run from October 1, 2017 to November 30, 2017 to thank the public and customers for their long-term support.

明途聯繫有限公司創業十五週年紀念特刊 MentalCare Connect 15th Anniversary Special Issue



23/11/2017
報紙特刊
Newspaper Supplement

明途聯繫有限公司創業十五週年紀念特刊

願景

「明途聯繫」願景是為殘疾人士及弱勢社群提供就業機會，並促進工作間的精神健康；推動社會企業的可持續發展和推廣「解鎖社會」運動。

使命

以社會企業模式為殘疾人士及弱勢社群提供就業機會，並促進工作間的精神健康；推動社會企業的可持續發展和推廣「解鎖社會」運動。

核心價值

以人為本、團隊精神、持續學習、創新思維、工作承諾

賀辭

同建同心
砥礪前行
Mr. Ip Ka-chi
主席

助益社羣
薄益社羣
Mr. Ho Yee-kwan
副主席

營商為善
社企明燈
Mr. Yip Ka-kit
董事

明德心匠
愛德遠達
Mr. Au Yee-kwan
董事

同建同心
播惠共勉
Mr. Tang Yee-kwan
董事

功在社會
Mr. Wong Yee-kwan
董事

啟能助弱
Ms. Au Yee-kwan
董事

互助津梁
自強新天
Ms. Au Yee-kwan
董事

復康展能
共創明途
Ms. Au Yee-kwan
董事

關愛同行
關愛同行
Ms. Au Yee-kwan
董事

關愛同行
關愛同行
Ms. Au Yee-kwan
董事

關愛同行
關愛同行
Ms. Au Yee-kwan
董事

「明途聯繫」董事會主席 - 黎守信醫生

本人欣然分享過去一年「明途聯繫」業務上的持續增長及發展動向，以及這家公司十五週年誌慶的喜悅。

過去十五年來，明途聯繫一直致力於為殘疾人士及弱勢社群提供就業機會，並促進工作間的精神健康。在過去十五年來，明途聯繫一直致力於為殘疾人士及弱勢社群提供就業機會，並促進工作間的精神健康。在過去十五年來，明途聯繫一直致力於為殘疾人士及弱勢社群提供就業機會，並促進工作間的精神健康。

「明途聯繫」行政總裁 - 陳偉成先生

今年是「明途聯繫」十五週年紀念，公司團隊設計了未來三年的發展藍圖。

「Mission 2020」

成為「解鎖社會」運動的推手

- 成立一間有最少50所社會企業，服務超過1,000名殘疾人士及弱勢社群的社會企業網絡平台 - 社會企業
- 設計及實施社會企業發展方案，促進社會企業間的互助合作精神 - 社會企業

為弱勢社群創造更多就業機會

- 增加4間「卓思」，2間「康復」及1間「康復」，社區服務中心
- 服務人數增加200人，服務6名殘疾人士及弱勢社群

實現線上線下並重策略

- 增加線上銷售收入，增加線上銷售收入佔總收入的12%

創造充足財務力量

- 2020年實現收入總額達1,500萬
- 拓展新的商業模式，增加資金使用的靈活性

社會效益亮點
(2002-2017)

HK\$ 768,080,823
歷年總收入

2,319
歷年僱員數目 (年度累計)

3,910,000
《香港經濟》雜誌讀者人數 (63期累計)

HK\$ 79,060,000
歷年節省社會成本

1,626
歷年弱勢僱員數目 (年度累計)

HK\$ 3,281,325
歷年採購社會及經濟工場產品

HK\$ 68,019,563
歷年發放給弱勢僱員薪酬

HK\$ 1,527,900
《健康連線》雜誌對外慈善贊助 (63期累計)

HK\$ 16,918,268
歷年政府撥發基金資助

自2011年以來，「明途聯繫」積極聯繫不同協會、專業團體及私營企業參與機構消費計劃，為參與計劃的機構轄下會員/職員提供較市場優惠的日常生活用品，現時參與計劃機構達二十八間，會員人數超過三十五萬。龐大的會員人數有利為會員爭取更優惠的貨品價格。

參與機構名單

機構消費計劃機構專用網上平台

【復康網】www.cheerspointnet.hk 【智醫局職員合作社上開店】 【復康網 - 香港商業發展局會員優惠】

【復康網線上商店】www.rehabexpress.com.hk

企業贊助的「健康連線」網上商店，為全港長者及殘疾人士提供「一站式」及「直接到戶」的護理用品及日常用品，為行動不便的長者及殘疾人士提供日常所需的護理用品，並提供及照顧各類物資的供應服務。

【社企網】www.SMail.hk

為推動社會企業間的互惠市場，「明途聯繫」於2017年設立社會企業間的互惠平台，定名為「社企網 S-Mail」，希望透過「社企網 S-Mail」，為社會企業提供一個互惠市場，同時推動社會企業間的互惠，建立更緊密的「良心消費」互惠平台。

「卓思」便利店/復康店分店網絡

【北區醫院】【西貢醫院】【沙田醫院】【大埔醫院】【博愛醫院】【將軍澳醫院】【屯門醫院】【康復醫院】【明愛醫院】【東華三院黃大仙醫院】

【南京街12號】【德和街143號】【德和街318號】【觀塘康復中心直轄門市】

「Cheers Cafe」及「喜點」分店網絡

【北區醫院】【教育局教育服務中心】【屯門醫院】【東華三院黃大仙醫院】【康復醫院】

機構消費計劃分店網絡

【智醫局職員合作社】【康復中心-中環山】

23/11/2017
報紙特刊
Newspaper Supplement

明途聯有限公司
MENTALCARE 15th
嘉慶紀念

香港心理衛生協會 Hong Kong Association of Mental Health

香港心理衛生會
The Mental Health Association of Hong Kong

「談程」說夢

持續學習，追尋夢想

Cheers Café 康復醫院員工
Jessica

加入「明途聯繫」以前，我曾經任職商業管理員，在職時認識香港心理衛生會社工，建議我參與三個月餐飲訓練，由場地切菜到調制食品，由對餐飲服務零認識到逐漸建立自信，其後我到「明途聯繫」轄下 Cheers Café 擔任店務員，一做便是三年半。

Cheers Café 的同事和主管很友善，同事們都是同路人，合作時沒有芥蒂，大家都積極工作，還會主動進修有興趣的課程，我很開心在這裡獲取了衛生督導員資格，我對食物衛生方面的要求有更深入的了解。

我享受在「明途聯繫」工作的日子，生活逐漸相見寬寬，除了每天工作八至十二小時外，工餘時還可以進修西餐料理、沖調咖啡，我希望日後有機會開設自己的小店，賣自製熱飲夠多士，為了達成夢想，我會繼續用心學習，吸收多些知識。

我希望故我可以

「服務」社會福利署高級福利
服務

因長期無法專注讀書下，無可奈何地在完成初中後便輟學，2009年，面對失業失學的重疊壓力，我患上了憂鬱失調。雖然在治療後找到工作，但在藥物作用影響下，令我難以工作進度，一度意志消沉，甚至不想與人接觸，在偶然機會下，有幸遇到香港心理衛生會社工，她安排我在「明途聯繫」參與學員訓練，在訓練期間工作表現獲上級認同及讚賞，其後更正式加入「明途聯繫」成為職員。

2013年，我獲聘擔任「醫療管理員實習社康」店員，在薪工作環境中，得到管理員張生、店長陳婉、店員呂杏給予悉心指導，令我學會很多工作技巧，如整理貨品、收銀、銷售等，他們亦不時關心我的身心健康狀況，當我身體不適時會安排我休息，內有問題糾結時，會靜心聆聽及給予無限支持。這四年期間，同事們真誠的關心，令我改變了很多負面情緒，漸漸地增強了自信，可以盡投社會工作。

對未來，我仍抱有期望，希望工作上可以更具獨立，表現可以更快進步，甚至嘗試公司不同崗位的職務，擴闊視野及技能，我希望故我可以。

路雖難走，但欄杆處處

「金銀業」律政及社會福利署
服務

五年前加入「明途聯繫」的大家庭，由學員做起，到現在晉升為副區主任，高興能與這大家庭一起成長，工作的層面已有很大的不同，猶記得做學員要執行公司指派的基層工作，同時需要了解各店舖的運作及與前線同事分工合作，沒有甚麼做學員的基礎訓練和磨練，也不會成今天的我。

如今我作為副區主任已任職兩年，既管理店舖由上至下，由細至大，我都要承擔責任，巨細無遺，一頭熱下，所牽涉的東西比做學員時代更複雜和高挑戰性，期間常有積累挫折感，感謝得到公司上下同仁的配合，身為康復者的我，深知知道這一切都得來不易，對內建康服務員工和自立的情緒，培養和鼓勵和團隊精神，教學相對，對外也要和醫院僅作團隊協作及與供應商處理買賣問題，至據制度和流程完善而具人性化，路是人行時，亦需要欄杆，而出於總有公司上下和不同的「你」做我和隊友們的欄杆，讓我們在沉穩中行得更遠。

感謝以下合作伙伴贊助「明途聯繫」創業十五周年紀念特刊

[illegible]

23/11/2017
明途聯繫有限公司創業十五週年紀念
酒會暨「社企淘」啟動禮
MentalCare Connect Co, Ltd. 15th
Anniversary Cocktails Party cum SE
Mall Kick-Off Ceremony

「明途聯繫」創業十五週年紀念酒會在旺角康得思酒店舉行。200多位政府部門、母會香港心理衛生會、商界、合作伙伴及社企界代表出席。食物及衛生局局長陳肇始教授更蒞臨主禮及致辭，並為「社企淘」進行啓動禮儀式。當日冠蓋雲集，場面熱鬧。

鍾偉成先生亦發佈「Mission 2020」，展望公司在未來數年的發展方向及目標：

- 為弱勢社群創造更多就業機會
- 實現線上線下營商策略
- 創造充足財務動量
- 成為「幫襯社企」運動的推手

明途聯繫有限公司
創業十五周年紀念酒會
暨「社企淘」啟動禮

Mission 2020

NTALCARE

業十五周年紀念酒會 暨「社企淘」啟動



16





26/11/2017 「喜悅同行 Cheers Walk」

「明途聯繫」的母會—香港心理衛生會於11月26日在沙田科學園舉行了「喜悅同行 Cheers Walk」慈善步行籌款，目的是為機構的「社會企業發展基金」籌募經費，為殘疾人士及弱勢社群創造就業機會。

The Mental Health Association of Hong Kong, mother organization of "MentalCare Connect", organized a fundraising event named "Cheers Walk" on November 26, 2017 (Sunday) at HKSTP in Shatin. The objectives of the walkathon is to raise fund for the Social Enterprise Development Fund and create job opportunities for disable and disadvantaged people



業務版圖 Business Presence



「卓思廊」北區醫院 24 小時便利店
"Cheers Gallery" North District Convenience Store(24 hour)

「卓思廊」律敦治醫院 24 小時便利店
"Cheers Gallery" Ruttonjee Hospital Convenience Store(24 hour)

「卓思廊」威爾斯親王醫院便利店
"Cheers Gallery" Prince of Wales Hospital Convenience Store

「卓思廊」大埔醫院便利店
"Cheers Gallery" Tai Po Hospital Convenience Store



「卓思廊」瑪麗醫院復康生活幹線
"Cheers Gallery" Queen Mary Hospital Rehab Links

「卓思廊」明愛醫院復康生活幹線
"Cheers Gallery" Caritas Medical Centre Rehab Links

「卓思廊」復康生活幹線 (協和街分店)
"Cheers Gallery" Rehab Links (Hip Wo Street Branch)

「卓思廊」復康生活幹線 (窩打老道分店)
"Cheers Gallery" Rehab Links (Waterloo Road Branch)

「卓思廊」黃大仙醫院復康生活幹線
"Cheers Gallery" TWGHs Wong Tai Sin Hospital Rehab Links

「卓思廊」廣華醫院復康生活幹線
"Cheers Gallery" Kwong Wah Hospital Rehab Links

20



「卓思廊」博愛醫院復康用品專賣店
"Cheers Gallery" Pok Oi Hospital Rehab Shop

「卓思廊」將軍澳醫院復康用品專賣店
"Cheers Gallery" Tseung Kwan O Hospital Rehab Shop

「卓思廊」屯門醫院復康用品專賣店
"Cheers Gallery" Tuen Mun Hospital Rehab Shop

「卓思廊」復康用品專賣店 (觀塘直銷門市)
"Cheers Gallery" Rehab Shop (Kwun Tung Direct Branch)

「卓思廊」復康用品專賣店 (南京街分店)
"Cheers Gallery" Rehab Shop (Nanking Street Branch)



醫院管理局職員合作社
Hospital Authority Staff Co-op Shop

「樂協」社團優惠坊
Cheers Co-op

北區醫院「Cheers Café」
Cheers Café@North District Hospital

屯門醫院「喜点」
Cheers Bakery@Tuen Mun Hospital

教育局教育服務中心「Cheers Café」
Cheers Café@ESC

東華三院黃大仙醫院「Cheers Café」
Cheers Café@TWGHs Wong Tai Sin Hospital

廣華醫院「Cheers Café」
Cheers Café@Kwong Wah Hospital



主要業務 Major Operations



22

零售業務 Retail Business

「卓思廊」零售網絡 "Cheers Gallery" Retail Network

「卓思廊」零售網絡已增至 14 家分店，覆蓋 10 間公營醫院及成功進駐觀塘及油尖旺社區。

The retail network of the "Cheers Gallery" has increased to 14 outlets and covers 10 public hospitals as well as Kwun Tong and Yau Tsim Mong districts.



業務由公營醫院成功擴展至不同的社區，營業額亦較去年有超過兩成的升幅。

The business has been successfully extended from public hospitals to different communities, and the turnover has increased by more than 20% as compared with last year.



於本年度增加了超過 2,000 個新銷售產品。
Over 2,000 new products have been introduced in Years 17-18.



未來，「卓思廊」會繼續為顧客搜羅更多不同類型的復康產品，提供更貼心的服務，滿足大眾的需求。

In the future, "Cheers Gallery" will continue to provide customers with more different categories of rehab products and provide more intimate services to meet our customers' needs & expectations.



「卓思廊」零售網絡 17-18
"Cheers Gallery"
Retail Network 17-18

營業額
Sales turnover
HK\$66,009,509

銷售貨品種類 (SKU)
9,383

供應商數目
No. of Supplier
501

卓思廊會員人數
No. of Cheers Club members
56,142





機構消費計劃 Organizational Consumption Project

實體店 Retail Shop

醫院管理局職員合作社及「樂協」社團優惠坊的總商品銷售額增幅超過百分之十八。

The Hospital Authority Co-op Shop and "Cheers Co-op" have a monetary value of transaction which is equivalent to 18% increase as compared with last year.



機構消費計劃將繼續為醫管局及「樂協」社團優惠坊帶來嶄新的購物體驗，務求將最優質的貨品以最優惠的定價回饋會員及顧客。

The Organizational Consumption Project will keep bringing novel shopping experience for the members and shoppers of the "HA Co-op Shop" and "Cheers Co-op".



機構消費計劃 (實體店) 17-18 Organizational Consumption Project Retail Shop 17-18

銷售貨品數量 Quantity of Goods Sold	789,442
銷售貨品種類 (SKU)	3812
供應商數目 No. of Supplier	350
券類銷售數量 (張) No. of coupon sold	330,916
月餅銷售數量 (個) No. of mooncake sold	244,143
福袋 / 禮品袋數量 No. of fortune bag prepared	55,090

機構消費計劃會員

Membership of Organizational Consumption Project



今年度新增十間加盟機構，累積參與計劃機構達三十七間，會員人數超過三十六萬，持續增長的會員人數有利向供應商爭取最佳的貨品價格，讓會員獲得更多優惠。

10 new organizations joined the project this year, with 37 participating institutions and more than 360,000 members. The number of member continues to grow and this is the key for bargaining attractive price and offering more privilege to our members.



機構消費計劃機構數目
No. of associations /
professional bodies
joining the Organizational
Consumption Project
37

機構消費計劃職員 /
會員總人數
Total no. of staff/members
of the Organizational
Consumption Project
365,000

機構消費計劃將繼續與不同協會及專業團體聯繫，使更多機構能為其會員帶來優質購物體驗。

The Organizational Consumption Project will liaise with different associations and professional bodies to enable more organizations to enjoy quality shopping experience and further introduce their members.





機構消費計劃會員

Membership of Organizational Consumption Project



全新業務發展

New Business Development

公司正積極籌備與葛蘭素史克合作，開展全新的市場推廣服務，發揮公司多年來在醫院網絡建立的宣傳渠道及產品專業知識，為客戶鞏固及開拓目標顧客群。

The Company actively engages with GlaxoSmithKline to implement a new marketing service with exploring and development new target segments with utilizing the established hospital network and promotional channels as well as its sophisticated product knowledge.



推廣「幫襯社企」

Promotion of "Buy Social" Movement

社企淘 SE Mall

公司積極推動「幫襯社企」運動，自 2017 年 11 月起自資設立「社企淘 SE Mall」網購平台，在推廣此全新品牌上累積廣告贊助接近三十萬，讓公眾可透過清晰鮮明的良心消費平台，從日常生活中實踐社會價值，支持社企可持續發展。現有十二間社企加盟「社企淘 SE Mall」，網上銷售產品及服務接近四百項。

"MentalCare Connect" actively promotes the "Buy Social" Movement by utilising its own resources to set up "SE Mall" in November 2017. Currently the promotional and advertising sponsorship accumulated to nearly HK\$300,000. This enhanced the public to understand ethical consumption through purchase on the "SE Mall" platform and support the sustainable development of Social Enterprise. There are 12 social enterprises joining "SE Mall" and nearly 400 items and services are available through this platform.



參與社企數目 Participating SE 12
銷售產品及服務種類 (SKU) 456
向社企贊助廣告金額 Advertising Sponsorship to SE's \$290,000



曲奇公社 Cookies Coop

「曲奇公社」聖誕曲奇禮盒由香港社會企業總會有限公司主辦，「明途聯繫」策劃，四間生產曲奇社企包括 Le Fournil、甦爐（香港善導會附屬社會企業）、籽陽服務有限公司（聖雅各福群會附屬社會企業）、delight kitchen（新生精神康復會附屬社會企業），透過連結不同社企的業務優勢，打造社企嶄新品牌。

The Christmas Cookie gift box was organized by Hong Kong Social Enterprise Association Ltd and further coordinated by "MentalCare Connect". The participating SEs included Le Fournil, So Bakery (The Society of Rehabilitation and Crime Prevention, Hong Kong's Social Enterprise), Mustard Seed Bakery (SE affiliated to St James Settlement's Social Enterprise) & delight kitchen (New Life Psychiatric Rehabilitation Association's Social Enterprise). A new brand could be created through the strategic cooperation from different social enterprises.



參與社企數目 Participating Social Enterprise	4
銷售曲奇數量 (SKU) Quantity of cookie sold	456
商品交易額 Turnover	\$231,984
向社企贊助廣告金額 Advertising sponsorship to SE	\$290,000

為庇護工場的弱勢社群人士創造訓練及工作機會
Create Training and Job Opportunities for the Disadvantaged People in sheltered workshops

「明途聯繫」成功競投部份特區政府慶回歸 20 周年「共慶回歸顯關懷」活動籌備物資合約，負責製作約三十萬個福袋派發予有需要的家庭及長者，公司邀請了三間社福機構庇護工場協助包裝福袋，藉此讓更多弱勢社群人士有機會參與訓練及工作。

"MentalCare Connect" successfully bid for the contract of preparing 300,000 gift packs for "Celebrations for All". It is part of the projects for the Celebration of the 20th Anniversary of the Establishment of Hong Kong Special Administrative Region. The gift packs will be distributed to the elderly households and families in need. "MentalCare Connect" invited three sheltered workshops to prepare the gift packs in order to enable more vulnerable people to have training and working opportunities.



電子商務 Electronic Commerce

電子商貿 <https://www.cheerspointnet.com.hk>

機構消費計劃轄下營運三個網購平台，全年單訂量接近九千張，較上年度增長超過百分之四十五。雖然有可觀的訂單增長，然而面對市場的激烈競爭，仍需努力優化業務營運表現，以保持長遠的競爭力。

The three online shopping platforms operated by the Organizational Consumption Project completed nearly 9,000 orders this year, epitomising 45% growth in business. Despite the considerable growth of business, it is necessary to optimize the operational performance, so as to strengthen ourselves to against the fierce competition in the market and develop in long term purpose.



物流及客戶服務中心搬遷至同區近五千呎場地，提供充裕空間處理日益增加的倉存及物流派送量，更籌備全面更新網購平台介面，同時積極聯繫供應商及增加多元化的貨品種類，以持續提昇顧客的購物體驗。

The Logistics and Customer Service Centre is relocated to approximately 5,000 sq ft in Kwun Tong, rendering ample space to handle the increasing inventory and logistics delivery volume. A comprehensive online sales interface is currently developed for further enhancing the supplier and product ranges, the customers' shopping experience can be further persistently enhanced.



機構消費計劃 (網上商店) Organizational Consumption Project (Online Shop)

銷售貨品數量 Quantity of goods sold	149,025
商品交易額 Monetary value of total transaction	\$11,254,670
每宗訂單平均值 Average of transaction per order	\$1,314
銷售訂單數量 No. of order receive	8,564
訂單送貨次數 No. of delivery service provided	9,160



30

「復康速遞」直銷業務
"Rehab Express"
Direct Sales Service

網購訂單數量
No. of order received
4,396

商品交易額
Monetary value of total
transaction
\$4,629,634

每宗訂單平均值
Average of transaction
per order
\$1,049

網購貨品數量
Quantity of goods sold
133,602

全港最多元化的復康用品網上商店
提供復康用品價格及資訊平台

The Most Diversified Rehab Product Online Platform
in Hong Kong, Providing Price and Information of
Rehab Products Purchase

電話訂購熱線

Hotline Purchase : 8206 6160

Whatsapp 訂購服務

Whatsapp Purchase Hotline : 5114 4981

傳真訂購熱線

Fax Purchase Hotline: : 2710 8322

網站訂購

Online Purchase: : www.rehabexpress.com.hk

「復康速遞」網上商店為全港長者及病友提供「一站式」及「直接到戶」的復康用品家居送貨服務，補充日常所需的復康用品。

"Rehab Express" Online Shop provides a one-stop and "direct-to-home" delivery service for the elderly and patients to supplement the daily rehab products.

面對運輸成本不斷上漲，我們仍堅持購貨滿 \$300 便可獲免費送貨服務的條款，希望繼續為有需要的病友和照顧者服務。

We offers free delivery service for making a HK\$300 purchase, despite the rising of transportation costs. This can provide more convenience to patients and their caregivers.

市場推廣服務

Marketing and Promotion Service

「卓思」市場推廣服務

"Cheers" Marketing & Promotion Service

為醫療及復康用品供應商及各大藥廠提供一站式市場推廣服務，包括度身訂造市場推廣計劃、宣傳刊物設計、印刷及派發服務，協辦醫院展銷及舉辦健康教育講座。

To provide one-stop marketing and promotional services for suppliers of medical and rehab products and pharmaceutical companies, including tailored marketing and promotional programmes, promotional material design, printing and distribution services, co-organize hospital bizarre and health talks.

本年度首次推出嶄新服務計劃，為藥廠提供顧問形式的服務，內容包括：招募會員、舉辦健康講座、運動班、工作坊及安排專職醫務人員為會員教授醫護知識等。

A new service was launched - providing consultancy services for pharmaceutical companies, including membership recruitment, health talks, fitness classes, workshops and arranging specialty staff to share medical knowledge to members.

「卓思」市場推廣服務致力提供更「多元化」和「一站式」的支援服務，冀成為各大藥廠和供應商的理想合作伙伴。

"Cheers" Marketing & Promotion Service commit to provide more "diversified" and "one-stop" services, seamlessly partnering with pharmaceutical companies and suppliers.

「卓思」市場推廣服務

"Cheers" Marketing and Promotion Service

廣告收入 Advertising income

\$3,121,694



Cheers
Marketing & Promotion Service
卓思市場推廣服務

傳單速遞
HandbillExpress





期刊出版 Publications

《復康速遞》雙月刊

Rehab Express Magazine (Bi-monthly)

全港首創的復康專題雜誌

Hong Kong's first rehabilitation magazine

網上瀏覽內容：www.rehabexpress.com.hk

Online content: www.rehabexpress.com.hk

每期出版 2 萬冊，派送到全港超過 2,000 個地點，當中包括 40 間公營醫院、超過 200 多間診所、化驗所、社福機構、老人院及地區組織等。

20,000 copies were distributed to more than 2,000 locations in Hong Kong, including 40 public hospitals, more than 200 clinics, laboratories, social welfare organizations, elderly homes and district bodies.



與讀者分享更多有關復康護理的知識和技巧，再配合復康用品的使用資訊，加強病友及照顧者對復健的信心，促進病友康復。

Share more knowledge and know-how in relation to rehab care with readers, and further relay with the information of rehab products for strengthen the confidence of patients and caregivers in the course of rehabilitation and promote the patient recovery process.



為病人自助組織或社福機構每期免費提供篇幅介紹罕見遺傳病或機構活動，免費篇幅的頁數更由每期 4 頁增加至 6 頁。與讀者分享新研發的復康產品和最新的復康資訊，一起走在時代尖端。

Provide free pages for patient's self-help organizations or social welfare organizations to introduce rare genetic diseases or the activities of these organizations. The number of free pages increased from 4 pages to 6 pages per issue. The readers can be beneficial with its sharing of the latest rehab products and the updated information as well as keeping abreast of the rehabilitation development.



《復康速遞》雙月刊
Rehab Express bi-monthly magazine

向社福機構贊助
廣告頁數金額
Advertising sponsorship
\$333,000

《復康速遞》惠及讀者人數
No. of reader
120,000



《醫院管理局員工優惠計劃》

"Hospital Authority Staff Welfare Scheme"

為接近 70,000 名醫管局職員共和 10,000 名退休員工提供優質的產品和銷售服務，並每兩個月出版《醫院管理局員工優惠計劃》，會員能一覽當時得令的貨品及其專屬優惠。

To provide quality products and sales services to nearly 70,000 HA staff and 10,000 retired staff, the bi-monthly magazine allows the readers to view the privileged packages and products at a glance.



《「樂協」社團優惠坊暨
悅購網會員優惠計劃》

"Cheers Co-op and Cheers
Point Net Membership
Welfare Scheme"

本期刊搜羅節慶貨品及時尚優惠，務求讓會員能一書在手，包攬最強折扣優惠。

The Booklet collects all festive goods and trendy offers. The members can grasp the best discount offers at one hand.





餐飲業務 Catering Service

34

Cheers Café 於二零一零年創辦
Cheers Café has a solid history dating back to 2010.



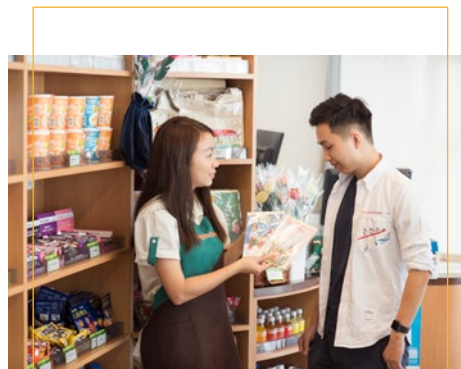
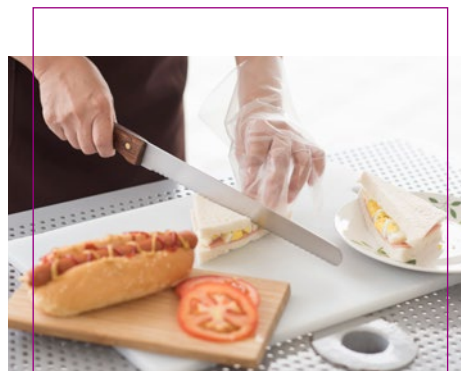
營辦黃大仙醫院 Cheers Café 開創了公司餐飲業務的一個新里程 - 成功申請「普通食肆牌照」，標誌著業務和運營規模進一步擴大。

The opening of Cheers Café in Wong Tai Sin Hospital charts a new horizon as the restaurant acquired "General Restaurant Licence" which marks the expansion in business and operational scale.



Cheers Café 不僅是為客戶提供優質餐飲服務，還致力為殘疾人和弱勢群體提供多元化的就業機會。

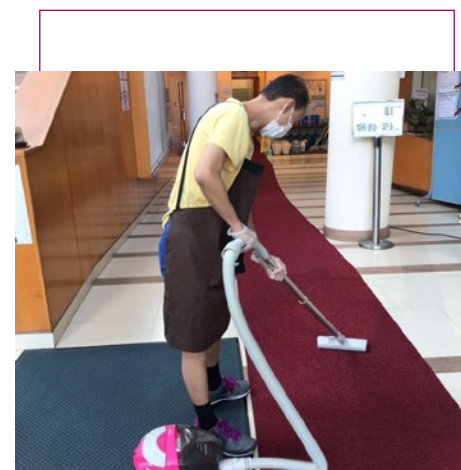
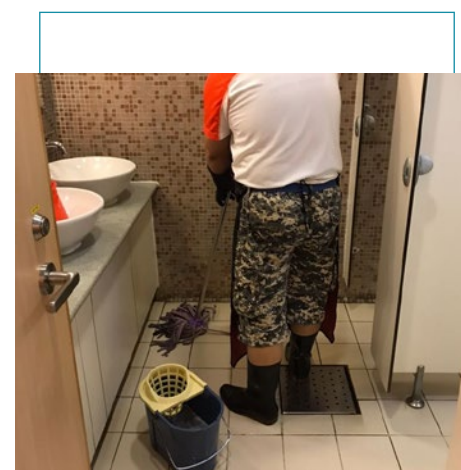
Cheers Café is a caterer committing to provide diversified job opportunities to disabled and disadvantaged people.



清潔業務 Cleansing

因應招聘人手困難，近年加強與庇護工場合作，以承接大型清潔場地合約，包括與香港心理衛生會立人坊工場合作承接天主教聖安德肋堂外判清潔合約，除了讓更多殘疾人士獲得工作機會外，合作模式亦有利清潔業務平穩發展。

In recent years, we collaborate with MHAHK sheltered workshop to undertake large scale venue cleaning contract, in response to the difficulties in recruiting manpower. The large projects include cleansing contract of Jockey Club Building sheltered workshop and St. Andrew's Church in Tseung Kwan O. Such collaboration offers employment opportunities to disabled person as well as facilitating the steady operational development.



主要項目 Key Projects

天主教聖安德肋堂 St. Andrew's Catholic Church
主網（亞洲）有限公司 Web-on (Asia) Ltd



員工參與及成就

Employee Participation & Achievement



公司職員聯誼活動 (4/2017)

「明途聯繫」與香港心理衛生會訓練及就業服務中心合辦的「職員聯誼活動」在曹公潭戶外康樂中心舉行。同事踴躍參與，於當天一起玩樂及燒烤，共渡輕鬆愉快的一天。

Networking activity for colleagues (Apr 2017)

"MentalCare Connect" and the Training and Employment Service Centre of The Mental Health Association of Hong Kong jointly organized a networking activity for the colleagues. The event was widely received by the colleagues and they had an enjoyable moment with playing games and having barbeque on that day.



「2017 十一良心消費運動」啟動禮 (9/2017)

「明途聯繫」支持機構身份參加「2017 十一良心消費運動」啟動禮。同事更在會場展示及推廣「曲奇公社」及「社企淘 SE Mall」，有在場社企認為項目有效幫助社企發展。

"Tithe Ethical Consumption Movement 2017" Kick-off Ceremony (Sept 2017)

"MentalCare Connect" was the supportive organization to attend the "Tithe Ethical Consumption Movement 2017" Kick-off Ceremony. The Company also promoted "Cookies Coop" and "SE Mall" in the venue.



香港社企優秀員工 嘉許計劃2017

暨 第四屆社企認證標誌頒授儀式



Hong Kong Social Enterprise Outstanding Employee Recognition Scheme 2017 (Oct 2017)

"MentalCare Connect" attended the "Hong Kong Social Enterprise Outstanding Employee Recognition Scheme 2017" organized by Hong Kong General Chamber of Social Enterprises Limited and 15 employees were awarded for praising and encouraging the outstanding staff.

Awardee list of HK Social Enterprise Outstanding Employee Recognition Scheme 2017:

HA Staff Co-op Shop	Choy Hiu Tung
Cheers Co-op	Tam Ka Yi
Cheers Point Net	Chan Chun Hei
"Cheers Gallery" Tai Po Hospital Convenience Store	Chan Sze Ki
"Cheers Gallery" Rehab Links (Waterloo Road)	Ho Chor Hin
"Cheers Gallery" North District Hospital Convenience Store(24hrs)	Chow Kan Chi
"Cheers Gallery" Prince of Wales Hospital Convenience Store	Cheung Mei Mei
"Cheers Gallery" Ruttonjee Hospital Convenience Store(24hrs)	Cheung Lai Lai
"Cheers Gallery" Queen Mary Hospital Rehab Links	Kwok Wai Chu
"Cheers Gallery" Rehab Links (Hip Wo Street)	Chan Sau Lai
"Cheers Gallery" Rehab shop (Naking Street)	Chan Wing Yan
"Cheers Gallery" Wong Tai Sin Hospital Rehab Links	Mak Lin Hing
"Cheers Gallery" Caritas Medical Centre Rehab Links	Wong Shu Li
"Cheers Gallery" Pok Oi Hospital Rehab Shop	Tam Yiu Chung
"Cheers Bakery" Tuen Mun Hospital	Tseng Sai Hung



香港社企優秀員工嘉許計劃 2017 (10/2017)

「明途聯繫」一共有 15 名員工在香港社會企業總會主辦的「香港社企優秀員工嘉許」獲得嘉許，表揚員工是公司重要的財產，並一起分享獲獎的喜悅之情。

社企優秀員工獲獎名單：

醫管局職員合作社	蔡曉東
「樂協」社團優惠坊	譚嘉怡
悅購網	陳震晞
「卓思廊」大埔便利店	陳詩琪
「卓思廊」復康生活幹線（窩打老道）	何楚騫
「卓思廊」北區醫院 24 小時便利店	周勤智
「卓思廊」威爾斯親王醫院便利店	張美媚
「卓思廊」律敦治醫院 24 小時便利店	張麗麗
「卓思廊」瑪麗醫院復康生活幹線	郭惠珠
「卓思廊」復康生活幹線（協和街）	陳秀麗
「卓思廊」復康用品專賣店（南京街）	陳穎欣
「卓思廊」黃大仙醫院復康生活幹線	麥連鑫
「卓思廊」明愛醫院復康生活幹線	黃舒莉
「卓思廊」博愛醫院復康用品專賣店	譚耀聰
屯門醫院「喜点」	鄭世鴻





「精神健康急救課程」(10-11/2017)

「明途聯繫」4位同事參加了香港心理衛生會由澳洲引入精神健康急救課程課程，認識抑鬱症、焦慮症、物質濫用、重性精神病及其急救處理，並獲發「精神健康急救課程」證書。

"Mental Health First Aid Course" (Oct to Nov 2017)

4 staff of "MentalCare Connect" participated in the "Mental Health First Aid Course" (MHFA Course) organized by The Mental Health Association of Hong Kong for understanding the basic knowledge of depression, anxiety disorders, psychosis and substance abuse. All of them were awarded the certificate after completing the course.



「明途聯繫」2017 年度周年晚宴 (1/2018)

公司周年晚宴在 2018 年 1 月舉行。董事黃銘光醫生致詞答謝員工在過去一年的努力。當天除了以遊戲及抽獎炒熱氣氛外，同場亦頒發 5 年及 10 年忠誠服務獎予得獎員工。

"MentalCare Connect" Annual Dinner 2017 (Jan 2018)

"MentalCare Connect" held the Annual Dinner 2017 in January, 2018. Dr. Wong Meng Kong, Director of "MentalCare Connect" addressed his gratitude to the staff's effort. Lucky draws and games were organized for fostering the joyful ambience and awards such as 5-year and 10-year long service awards were also presented.



交流分享及參觀 Sharing & Visits



2017 國際工作組織及亞洲工作組織論壇 (6/2017)

鍾偉成先生擔任專題會議的講者，講解社企成功為殘疾人士創造就業機會的關鍵因素。

2017 Conference of Workability International and Workability Asia (Jun 2017)

Mr. Chung Wai Shing shared the experience about "Critical Success Factors for Running a Work Integration Social Enterprise" in the plenary session.

香港善導會專題座談會 (9/2017)

鍾偉成先生出席香港善導會「精神健康服務及社會企業計劃」開幕禮，並擔任專題座談會「社會企業：精神健康服務的機遇」的嘉賓講者，分享「明途聯繫」如何為精神病康復者創造就業機會。

The Forum of the Society of Rehabilitation and Crime Prevention Hong Kong (Sept 2017)

The opening ceremony of 「精神健康服務及社會企業計劃」 was organized by the Society of Rehabilitation and Crime Prevention Hong Kong. Mr. Chung Wai Shing was invited as a guest speaker to share MentalCare Connect's experience of creating employment for the people with mental disabilities.



愛德 - 社創星社會企業研習營 (9/2017)

鍾偉成先生應邀遠赴南京擔任愛德 - 社創星社會企業研習營的講者，分享香港社企發展及「明途聯繫」成功的關鍵因素。

Sharing Session of the Development of Hong Kong Social Enterprise in Nanjing (Sept 2017)

Mr. Chung Wai Shing was invited to Nanjing as a speaker for sharing the development of Hong Kong social enterprise and the key success factors of "MentalCare Connect" in 愛德 - 社創星社會企業研習營。



「真·社企對話」社企研討會 (10/2017)

鍾偉成先生出席香港社會企業總會主辦的「真·社企對話」社企研討會的嘉賓講者，講述如何以社工身份投身社企行業及「明途聯繫」的發展歷程。公司於午膳期間在會場推廣「曲奇公社」，在場人士反應熱烈，踴躍預購。

Real Dialogue in Social Enterprise (Oct 2017)

Mr. Chung Wai Shing was invited as the speaker for a "Real Dialogue in Social Enterprise" organized by the Hong Kong General Chamber of Social Enterprises Limited. He shared his experience regarding how a social worker set up social enterprise and the development of "MentalCare Connect". Besides, "MentalCare Connect" promoted "Cookies Coop" in the venue. The participants showed much interest in placing orders for the cookies.

「社企數碼營銷實用工作坊」(11/2017)

Fimmick 與 2017 良心消費運動合辦了「SPARKTIVITY: 社企數碼營銷實用工作坊」，鍾偉成先生參與並出席是次活動，分享「明途聯繫」在網上營銷的經驗及策略。

SPARKTIVITY: A Practical Workshop on Digital Marketing for Non-Profits (Nov 2017)

"SPARKTIVITY: A Practical Workshop on Digital Marketing for Non-Profits" was co-organized by Fimmick and the Tithe Ethical Consumption Movement 2017. Mr. Chung Wai Shing shared the strategies and experience about online platform operated by the Company.





香港中文大學工商管理碩士的課程評審 (11/2017)

鍾偉成先生獲邀擔任香港中文大學工商管理碩士課程 "Social Entrepreneurship and Impact Investment" 的資助委員會的評審小組成員，選出得獎的商業建議書。

The Competition of CUHK MBA Course (Nov 2017)

Mr. Chung Wai Shing was invited to be the judging panelist of the Funding Committee for the final presentation of CUHK MBA Course-Social Entrepreneurship and Impact Investment and selecting the winning business proposal.

企業成就 Corporate Achievements



「樂協」社團優惠坊獲得社企認證中的創啟級別 (4/2017)

「樂協」社團優惠坊（「樂協」）於2017年4月獲得社企認證（SEE Mark）的創啟級，表揚「樂協」所提倡的社會使命和良心消費的價值，藉此鼓勵「樂協」繼續努力，為弱勢社群提供就業機會，支持社會企業持續發展。

"Cheers Co-op" awarded the Incubating Member in SEE Mark (Apr 2017)

"Cheers Co-op" has awarded the Incubating Member from the Social Enterprise Endorsement (SEE) Scheme in April 2017. It encouraged "Cheers Co-op" to create job opportunities for disadvantaged people, as well as demonstrate the self-sustaining of social enterprise.



機構參觀

「明途聯繫」接待不同團體及組織參觀旗下店舖，殘疾僱員現身說法講解店舖日常運作，讓參觀者了解殘疾人士及弱勢社群如何融入社會，投入工作崗位。

Visiting from Organizations

Different organizations were invited to visit our outlets. The disabled employees introduced the daily operation, so that the visitors were able to understand how the disabled and disadvantaged people could re-integrate into the society and workplace.



月份 Month	參觀機構 Visitors	參觀地點 Venue
05/2017	義務工作發展局 Agency for Volunteer Service	「樂協」社團優惠坊 Cheers Co-op
	珠海市殘疾人聯合會 Zhu Hai Disabled Person's Federation	
	珠海白雲康復醫院 Zhu Hai Bai Yun Rehabilitation Hospital	
	珠海慈愛精神康復醫院 Zhu Hai CiAi Mental Rehabilitation Hospital	
06/2017	香港教育大學 The Education University of Hong Kong	醫管局職員合作社 HA Staff Co-op Shop
	國際工作組織及亞洲工作組織 2017 Conference of Workability International and Workability Asia	「卓思廊」復康生活幹線 "Cheers Gallery" Rehab Links
		香港心理衛生會「卓思廊」 "Cheers Gallery" in The Mental Health Association of Hong Kong
09/2017	台灣慈濟科技大學 Taiwan Tzu Chi University of Science and Technology	醫管局職員合作社 HA Staff Co-op Shop
12/2017	社創基金 - 共享價值論壇 Shared Value Forum 2017	物流及客戶服務中心 Logistic and Customer Service Centre

「明途聯繫」獲嘉許為「職場精神健康大使」(6/2017)

由滙豐 150 週年慈善計劃透過香港公益金資助，香港心理衛生會訓練及就業服務中心推行了友約會就業支援先導計劃，「明途聯繫」獲嘉許為「職場精神健康大使」。店長潘志偉先生分享其於「卓思廊」的工作體驗。

Awarded to be Ambassador in Pilot Scheme (Jun 2017)

HSBC 150th Anniversary Charity Programme co-sponsored with Community Chest, supporting Training and Employment Service Centre, MHAHK for the employment scheme named "Pilot Scheme on vocational Support for Persons with Disability." "MentalCare Connect" awarded the "Programme Ambassador", Mr. Poon Chi Wai attended the ceremony to share his working experience in "Cheers Gallery".



職夢起航 友約會就業支援先導計劃 啟動禮



支持長者實地培訓試驗計劃 「卓思廊」獲頒感謝狀 (7/2017)

「明途聯繫」於「銀齡創耆職」分享會獲頒發感謝狀。表揚其積極支持並為長者提供培訓及重新就業的機會，以達至「老有所為」及「成功老化」。

Appreciate "Cheers Gallery" to Support On-job Training Programme for Elderly (Jul 2017)

"Cheers Gallery" awarded the certificate of appreciation in 「銀齡創耆職」 due to its support to the programme and provided the elderly training and re-employment opportunities.

觀塘區關愛僱主表揚計劃 2017 (1/2018)

「明途聯繫」於「觀塘區關愛僱主表揚計劃 2017」獲頒發嘉許狀，以表揚公司在傷健共融所作出的努力。

Caring Employer Award, Kwun Tong District 2017 (Jan 2018)

"MentalCare Connect" awarded the certificate in "Caring Employer Award, Kwun Tong District 2017" to praise the enthusiasm on employing disabled persons.



「2017 精神健康月」嘉許禮 (11/2017)

「明途聯繫」於「2017 精神健康月」嘉許禮獲頒發感謝狀以表揚對精神健康的關注及重視，以及對活動的支持。

"2017 Mental Health Month" Certificate (Nov 2017)

"MentalCare Connect" was awarded the certificate in "2017 Mental Health Month" for appreciating the care and attention of mental health and supporting the event.



2017 十一良心消費運動獎項 (1/2018)

「樂協」社團優惠坊於「2017 十一良心消費運動嘉許典禮暨閉幕禮」榮獲「顧客最喜愛社企新星大獎」；而「卓思廊」復康生活幹線則榮獲「最積極參與社企大獎」。

"Tithe Ethical Consumption Movement 2017" Award (Jan 2018)

"Cheers Co-op" and "Cheers Gallery" Rehab Links, the brands under "MentalCare Connect", were respectively awarded "顧客最喜愛社企新星大獎" and "最積極參與社企大獎" in the Closing cum Award Presentation Ceremony of "Tithe Ethical Consumption Movement 2017".



十八區關愛僱主表揚計劃 2017 嘉許 (12/2017)

「明途聯繫」榮獲 2017 年「十八區關愛僱主 連續五年以上大獎」嘉許，以表揚和肯定公司在推廣傷健共融的努力。

Prize Presentation Ceremony for "18 Districts Caring Employers" 2017 Award (Dec 2017)

"MentalCare Connect" awarded the "Special Award for being awarded for 5 consecutive years or above" to praise on fostering social integration of disabled persons in the mainstream labour market.

《有能者・聘之約章》及共融機構嘉許計劃 2017-2018 (3/2018)

「明途聯繫」及旗下的「樂協」社團優惠坊於 2017-2018 年度的《有能者・聘之約章》及共融機構嘉許計劃分別榮獲「友善聘用獎」及「傑出共融團隊獎」。

Talent-Wise Employment Charter and Inclusive Organisations Recognition Scheme 2017-2018 (Mar 2018)

"MentalCare Connect" and its brand "Cheers Co-op" awarded "Friendly Employment Award" and "Outstanding Inclusive Team Award" respectively in "Talent-Wise Employment Charter and Inclusive Organisations Recognition Scheme 2017-2018".



第八屆香港企業公民計劃頒獎典禮 (12/2017)

「卓思廊」便利店及「復康速遞」直銷業務榮獲第八屆香港企業公民計劃社會企業組別的銅獎；餐飲業務及「卓思廊」復康用品專賣店則獲得社會企業組別的優異獎；機構消費計劃獲頒發「企業公民嘉許標誌」，以表揚公司在營運企業時亦推動社會責任，宣揚企業公民的理念。

The 8th Hong Kong Outstanding Citizenship Award (Dec 2017)

In Social Enterprise category of "The 8th Hong Kong Outstanding Citizenship Award", Bronze Medals were awarded to "Cheers Gallery" Convenience Stores and "Rehab Express" Direct Sales Service; Catering Service and "Cheers Gallery" Rehab Shops were presented with Merit Award, and also Drive for Corporate Citizenship was given to Organizational Consumption Project. These awards symbolised the success of "MentalCare Connect" in promoting social responsibilities and the concept of corporate citizenship.



「商界展關懷」連續 15 年標誌 (3/2018)

「明途聯繫」於 2018 年度的「商界展關懷」嘉許禮獲頒發連續 15 年以上「商界展關懷」標誌的公司的獎項，藉此表揚公司積極推動企業社會責任，建設共融社會。

15th consecutive years Caring Company Logo (Mar 2018)

"MentalCare Connect" awarded the certificate of 15th consecutive years Caring Company Logo in "The Caring Company Logo Ceremony 2018" for praising the company to proactively promote the good corporate, citizenship and social inclusiveness.

財務回報 2017-2018 Financial Return

2017-2018 年度 總收入 Annual Revenue : HK\$144,741,133
種籽基金贊助 Grant Sponsorship : HK\$1,584,043
營運收入 Revenue : HK\$143,157,090
責任採購 Responsible Procurement : HK\$174,591

1.1%

種籽基金
Grant Sponsorship

48

98.9%

營運收入
Revenue

核數報告 2017-2018 Audit Report

T M HO SO & LEUNG CPA LIMITED
 CERTIFIED PUBLIC ACCOUNTANTS (PRACTISING)
 何臨文蘇漢鴻謝賢會計師行有限公司
 香港中環德輔道中317-319號
 電話：(852) 2525 1277 FAX：(852) 2845 3800
 E-mail: info@tmsleungcpa.com

INDEPENDENT AUDITOR'S REPORT
TO THE MEMBERS OF MENTALCARE CONNECT COMPANY LIMITED
 明達聯營有限公司
 (Incorporated in Hong Kong with limited liability)

Opinion
 We have audited the financial statements of MentalCare Connect Company Limited ("the Company") set out on pages 6 to 18, which comprise the statement of financial position as at 31 March 2018, and the statement of comprehensive income, the statement of cash flows and the statement of changes in equity for the year then ended, and notes to the financial statements, including a summary of significant accounting policies.

In our opinion, the financial statements give a true and fair view of the financial position of the Company as at 31 March 2018, and of its financial performance and its cash flows for the year then ended in accordance with Hong Kong Financial Reporting Standard for Private Entities ("HKFRS for Private Entities") issued by the Hong Kong Institute of Certified Public Accountants ("HKICPA") and have been properly prepared in compliance with the Hong Kong Companies Ordinance.

Basis for Opinion
 We conducted our audit in accordance with Hong Kong Standards on Auditing ("HKSA") issued by the HKICPA. Our responsibilities under those standards are further described in the Auditor's Responsibilities for the Audit of the Financial Statements section of our report. We are independent of the Company in accordance with the HKICPA's Code of Ethics for Professional Accountants ("the Code"), and we have fulfilled our other ethical responsibilities in accordance with the Code. We believe that the audit evidence we have obtained is sufficient and appropriate to provide a basis for our opinion.

Other Information
 The directors are responsible for the other information. The other information obtained at the date of this auditor's report is information included in the report of the directors set out on pages 1 to 2, but does not include the financial statements and our auditor's report thereon.

Our opinion on the financial statements does not cover the other information and we do not express any form of assurance conclusion thereon.

Page 3

T M HO SO & LEUNG CPA LTD.
 CERTIFIED PUBLIC ACCOUNTANTS

In connection with our audit of the financial statements, our responsibility is to read the other information and, in doing so, consider whether the other information is materially inconsistent with the financial statements or our knowledge obtained in the audit, or otherwise appears to be materially misstated. If, based on the work we have performed on the other information obtained prior to the date of this auditor's report, we conclude that there is a material misstatement of this other information, we are required to report that fact. We have nothing to report in this regard.

Responsibilities of Directors for the Financial Statements

The directors are responsible for the preparation of the financial statements that give a true and fair view in accordance with HKFRS for Private Entities issued by the HKICPA and the Hong Kong Companies Ordinance, and for such internal control as the directors determine is necessary to enable the preparation of financial statements that are free from material misstatement, whether due to fraud or error.

In preparing the financial statements, the directors are responsible for assessing the Company's ability to continue as a going concern, disclosing, as applicable, matters related to going concern and using the going concern basis of accounting unless the directors either intend to liquidate the Company or to cease operations, or have no realistic alternative but to do so.

Auditor's Responsibilities for the Audit of the Financial Statements

Our objectives are to obtain reasonable assurance about whether the financial statements as a whole are free from material misstatement, whether due to fraud or error, and to issue an auditor's report that includes our opinion. This report is made solely to you, as a body, in accordance with section 405 of the Hong Kong Companies Ordinance, and for no other purpose. We do not assume responsibility towards or accept liability to any other person for the contents of this report.

Reasonable assurance is a high level of assurance, but is not a guarantee that an audit conducted in accordance with HKSA will always detect a material misstatement when it exists. Misstatements can arise from fraud or error and are considered material if, individually or in the aggregate, they could reasonably be expected to influence the economic decisions of users taken on the basis of these financial statements.

As part of an audit in accordance with HKSA, we exercise professional judgment and maintain professional skepticism throughout the audit. We also:

- Identify and assess the risks of material misstatement of the financial statements, whether due to fraud or error, design and perform audit procedures responsive to those risks, and obtain audit evidence that is sufficient and appropriate to provide a basis for our opinion. The risk of not detecting a material misstatement resulting from fraud is higher than for one resulting from error, as fraud may involve collusion, forgery, intentional omissions, misrepresentations, or the override of internal control.
- Obtain an understanding of internal control relevant to the audit in order to design audit procedures that are appropriate in the circumstances, but not for the purpose of expressing an opinion on the effectiveness of the Company's internal control.
- Evaluate the appropriateness of accounting policies used and the reasonableness of accounting estimates and related disclosures made by the directors.

Page 4

T M HO SO & LEUNG CPA LTD.
 CERTIFIED PUBLIC ACCOUNTANTS

- Conclude on the appropriateness of the directors' use of the going concern basis of accounting and, based on the audit evidence obtained, whether a material uncertainty exists related to events or conditions that may cast significant doubt on the Company's ability to continue as a going concern. If we conclude that a material uncertainty exists, we are required to draw attention in our auditor's report to the related disclosures in the financial statements or, if such disclosures are inadequate, to modify our opinion. Our conclusions are based on the audit evidence obtained up to the date of our auditor's report. However, future events or conditions may cause the Company to cease to continue as a going concern.
- Evaluate the overall presentation, structure and content of the financial statements, including the disclosures, and whether the financial statements represent the underlying transactions and events in a manner that achieves fair presentation.

We communicate with those charged with governance regarding, among other matters, the planned scope and timing of the audit and significant audit findings, including any significant deficiencies in internal control that we identify during our audit.


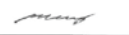
T M Ho So & Leung CPA Ltd.

T.M.Ho So & Leung CPA Limited
 Certified Public Accountants (Practising)
 Hong Kong

Date: 10 OCT 2018

Practising Director: Kwok Kam Sim
 Practising Certificate No.: P03736

Page 5

MENTALCARE CONNECT COMPANY LIMITED 明達聯繫有限公司 STATEMENT OF FINANCIAL POSITION AS AT 31 MARCH 2018			
	NOTE	2018 HK\$	2017 HK\$
NON-CURRENT ASSETS			
Plant and equipment	4	3,107,280	3,678,460
CURRENT ASSETS			
Inventories	5	7,358,514	5,861,676
Deposits		466,757	382,757
Payment in advance		119,350	103,278
Trade and other receivables		1,938,811	2,541,768
Cash and bank balances		7,330,104	5,470,400
		17,213,536	14,359,879
CURRENT LIABILITIES			
Accrued expenses		2,069,181	2,517,342
Trade and other payables		12,968,226	10,814,361
Received in advance		647,259	402,868
Deferred income	6	650,926	838,781
Current tax payable	7	180,508	0
		16,516,100	14,573,352
NET CURRENT ASSETS/(LIABILITIES)		697,436	(213,473)
TOTAL ASSETS LESS CURRENT LIABILITIES		3,804,716	3,464,987
NON-CURRENT LIABILITIES			
Deferred income	6	(826,931)	(1,483,399)
NET ASSETS		2,977,785	1,981,588
Represented by:			
Share capital	8	3,000,000	3,000,000
SWD funds		161,986	161,986
Accumulated losses		(184,201)	(1,180,398)
TOTAL FUND AND RESERVES		2,977,785	1,981,588
The accompanying accounting policies and explanatory notes form an integral part of, and should be read in conjunction with, these financial statements.			
These financial statements were approved and authorised for issue by the Company's Board of Directors on 10 OCT 2018			
 Lai Benjamin Director			
 Wong Meng Kong Director			

Page 6

MENTALCARE CONNECT COMPANY LIMITED 明達聯繫有限公司 STATEMENT OF COMPREHENSIVE INCOME FOR THE YEAR ENDED 31 MARCH 2018			
	NOTE	2018 HK\$	2017 HK\$
INCOME			
Grant income	6	1,584,043	2,039,012
Sales income	9	142,903,769	116,927,261
Sundry income		253,321	104,591
Total Income	10	144,741,133	119,070,864
EXPENDITURE			
Cost of sales	11	103,258,433	83,702,825
Staff Cost			
- Salaries, wages and allowances		20,997,617	19,862,510
- Contribution to MPF		1,127,257	1,033,027
Depreciation on plant and equipment	4	1,575,729	1,448,751
Management fee to immediate parent and ultimate controlling party		428,693	350,782
Other operating expenses	13	16,176,699	12,554,012
Total Expenditure		143,564,428	118,951,907
PROFIT BEFORE TAXATION	10	1,176,705	118,957
TAX EXPENSES	12	180,508	0
PROFIT AND TOTAL COMPREHENSIVE INCOME FOR THE YEAR		996,197	118,957
The accompanying accounting policies and explanatory notes form an integral part of, and should be read in conjunction with, these financial statements.			

Page 7

鳴謝 Acknowledgement

義務法律顧問	Honorary Legal Advisor
周靜嫻律師	Ms. Loretta C. H. Chow
許宗盛先生 BBS, MH, JP	Mr Herman Hui, BBS, MH, JP
義務商業顧問	Honorary Business Advisors
莫華勳先生	Mr. Peter Mok
紀治興博士, JP	Dr. Kee Chi Hing, JP
周允松先生	Mr. Winston Chow
政府部門	Government Departments
社會福利署康復服務市場顧問辦事處	Marketing Consultancy Office (Rehabilitation), Social Welfare Department
社會福利署	Social Welfare Department
民政事務局	Home Affairs Bureau
勞工及福利局	Labour & Welfare Bureau
食物及衛生局	Food and Health Bureau
商業夥伴	Business Partners
醫院管理局	Hospital Authority
北區醫院	North District Hospital
博愛醫院	Pok Oi Hospital
律敦治醫院	Ruttonjee Hospitals
將軍澳醫院	Tseung Kwan O Hospital
屯門醫院	Tuen Mun Hospital
瑪麗醫院	Queen Mary Hospital
明愛醫院	Caritas Medical Centre
大埔醫院	Tai Po Hospital
黃大仙醫院	TWGHs Wong Tai Sin Hospital
廣華醫院	Kwong Wah Hospital
威爾斯親王醫院	Prince of Wales Hospital
教育局九龍塘教育服務中心	Education Bureau Kowloon Tong Education Services Centre
香港防癌會賽馬會癌症康復中心	The Hong Kong Anti-Cancer Society Jockey Club Cancer Rehabilitation Centre
信佳集團管理有限公司	Serco Group (HK) Limited
香港銅鑼灣皇冠假日酒店	Crowne Plaza Hong Kong Causeway Bay
畢馬威會計師事務所	KPMG
俊和建築工程有限公司	Chun Wo Construction Holdings Company Limited
星展銀行(香港)有限公司	DBS Bank (Hong Kong) Limited
親子王國	Baby Kingdom
康業服務有限公司	Hong Yip Service Company Limited

恆益物業管理有限公司	Hang Yick Properties Management Limited
偉邦物業管理有限公司	Well Born Real Estate Management Limited
毅力醫護健康集團	Kinetics Medical & Health Group
太平洋科技有限公司	ASM Pacific Technology Asia Limited
易寶通訊服務有限公司	Epro Telecom Services Limited
勞氏清潔服務有限公司	Lo's Cleaning Services Ltd.
美麗華集團	Miramar Group
濠江電子科技有限公司	EC Fix Technology Limited
香港寬頻有限公司	Hong Kong Broadband Network
帝盛酒店集團	Dorsett Hospitality
香港賽馬會	The Hong Kong Jockey Club
香港人壽保險從業員協會	The Life Underwriters Association of Hong Kong
香港工程師學會	Hong Kong Institution of Engineers
香港社會工作者總工會	Hong Kong Social Workers' General Union
香港基督少年軍	The Boys' Brigade Hong Kong
伊利沙伯醫院同儕會	QEH Alumni Association
香港退伍軍人聯會	The Hong Kong Ex-Servicemen's Association
香港聖約翰救護機構	St. John Ambulance
誠信綜合治療中心 / 誠信醫療中心	Alliance Holistic Care Center/ Alliance Medical Center
香港大學傳訊及公共事務處	Communications and Public Affairs Office, The University of Hong Kong
豐盛社企學會	Fullness Social Enterprises Society
嶺南衡怡紀念中學	Lingnan Hang Yee Memorial Secondary School
香港心理衛生會	The Mental Health Association of Hong Kong
香港職業發展服務處	Hong Kong Employment Development Service Limited
聖雅各福群會	St. James' Settlement
香港基督教女青年會	Hong Kong Young Women's Christian Association
香港中華基督教青年會	Chinese YMCA of Hong Kong
基督教勵行會 - 培訓服務	Christian Action Training Services
義務工作發展局	Agency for Volunteer Service
浸信會愛群社會服務處	Baptist Oi Kwan Social Service

《復康速遞》雜誌名譽顧問團（排名不分先後）	
方玉輝醫生 社會醫學專科醫生	Dr. Ben Fong Specialist in Community Medicine
何惠娟女士 香港心理衛生會總幹事	Ms. Kimmy Ho Director, The Mental Health Association of Hong Kong
李俊傑醫生 養和醫院家庭醫學專科醫生	Dr. Tony Lee Specialist in Family Medicine, Hong Kong Sanatorium & Hospital
吳美君女士 名卓護綜合專科護理及顧問中心顧問護士	Ms. May Ng Nurse Consultant, Nu Pro Nurse Clinic Centre of Excellence
高永文醫生 前食物及衛生局局長	Dr. Ko Wing Man Former Secretary for Food and Health Bureau
高淑蘭女士 北區醫院部門經理（職業治療）	Ms. Flora Ko Department Manager (Occupational Therapy), North District Hospital
孫外主教授 香港中文大學中醫學院專業顧問	Prof. Sun Waizhu Professional Consultant, School of Chinese Medicine, The Chinese University of Hong Kong
莫恩榮醫生 九龍醫院胸肺內科部門主管	Dr. Thomas Mok Chief of Service, Respiratory Medical Department, Kowloon Hospital
莫華勳先生 大澳文化基金會有限公司董事	Mr. Peter Mok Director, Tai O Heritage Foundation Limited
許偉智先生 葵涌醫院高級物理治療師	Mr. Simon Hui Senior Physiotherapist, Kwai Chung Hospital
麥基恩醫生 資深精神科醫生	Dr. Mak Ki Yan Specialist in Psychiatry
楊慧珍女士 高級營養師	Ms. Emily Yeung Senior Dietician
葉維國醫生 香港中文大學內科及藥物治療學系心臟專科醫生	Dr. Gabriel Yip Specialist in Cardiology, Dept. of Medicine & Therapeutics, The Chinese University of Hong Kong

黎守信醫生 資深精神科醫生	Dr. Benjamin Lai Specialist in Psychiatry
潘佩璆醫生 資深精神科醫生	Dr. Pan Pey Chyou Specialist in Psychiatry
詹華強教授 香港科技大學中藥研發中心主任	Dr. Karl Tsim Director, Division of Life Science, Center for Chinese Medicine R&D, The Hong Kong University of Science & Technology
劉業添醫生 內分泌及糖尿病專科醫生	Dr. Lau Ip Tim Specialist, Diabetes and Metabolism
盧德臨醫生 葵涌醫院行政總監	Dr. Lo Tak Lam Hospital Chief Executive, Kwai Chung Hospital
龐曹聖玉女士 香港護理及衛生管理學院院長	Ms. Alice Tso President, The Hong Kong College of Nursing and Health Care Management
鄭國柱醫生 呼吸系統科專科醫生	Dr. Kwong Kwok Chu Specialist, Respiratory Medicine
羅英敏先生 香港理工大學康復治療科學系臨床導師	Mr. Angus Law Clinical Associate (MPT Clinical Coordinator), The Hong Kong Polytechnic University

《復康速遞》雜誌封面故事人物（排名不分先後）	
張瑪莉女士 張瑪莉市場推廣（國際）有限公司執行董事	Ms. Mary Cheung Managing Director, Mary Cheung & Associates (International) Limited
韓馬利女士 演藝人士	Ms. Hon Ma Li Artist
陳章明教授 平等機會委員會主席	Prof. Alfred Chan Chairperson, Equal Opportunities Commission
麥長青先生 演藝人士	Mr. Mak Cheung Ching Artist
傅家俊先生 職業司諾克球手	Mr. Fu Ka Chun Professional Snooker Player
江美儀女士 演藝人士	Ms. Kong May Yee Artist

《復康速遞》雜誌作者及編輯團隊（排名不分先後）	
醫院管理局	Hospital Authority
香港防癌會	The Hong Kong Anti-Cancer Society
社區營養服務及教育中心	Community Nutrition Services & Education Center
聖雅各福群會	St. James' Settlement
香港職業治療學會	Hong Kong Occupational Therapy Association
香港心理衛生會社區教育部	Division of Community Education, The Mental Health, Association of Hong Kong
賽諾菲安萬特香港有限公司	Sanofi-aventis Hong Kong Limited
基督教聯合那打素社康服務	United Christian Nethersole Community Health Service
黃麗詩醫生 北區醫院內分泌科專科醫生	Dr. Wong Lai Sze Associate Consultant, Department of Medicine, North District Hospital
張傑醫生 皮膚科專科醫生	Dr. Jacky Chang Specialists in Dermatology
羅兆榆小姐 英國註冊音樂治療師	Ms. Fanny Lo Registered Music Therapist
李國平醫生 大埔那打素醫院副顧問醫生	Dr. Lee Kwok Ping, Tommy Associate Consultant, A&E Department, Alice Ho Nethersole Hospital
陳栢羲醫生 香港大學內科學系臨床助理教授心臟科專科醫生	Dr. Chan Pak Hei Clinical Assistant Professor (HKU) Specialist in Cardiology
鄭銳鈞先生 北區醫院一級物理治療師	Mr. Cheng Yui Kwan Physiotherapist I, North District Hospital
馬天慧醫生 內科腫瘤科專科	Dr. Ma Tin Wei Specialist in Medical Oncology
劉秀英女士 威爾斯親王醫院高級物理治療師	Ms. Lau Sau Ying Senior Physiotherapist, Prince of Wales Hospital
梁廣亮醫生 北區醫院急症室副顧問	Dr. Leung Kwong Leung Assistant Consultant, A&E Department, North District Hospital
梁鍵敬醫師 香港防癆會中醫診所暨香港大學中醫臨床教研中心（香港仔）	Dr. Leung Kin King The Hong Kong Tuberculosis Association Chinese Medicine Clinic cum Training Centre of the University of Hong Kong (Aberdeen)

張亦廷醫師 香港防癆會中醫診所暨香港大學中醫臨床 教研中心（香港仔）	Dr. Cheung Yik Ting The Hong Kong Tuberculosis Association Chinese Medicine Clinic cum Training Centre of the University of Hong Kong (Aberdeen)
陳裕豪醫生 心臟科專科醫生	Dr. Chan Yu Ho Specialist in Cardiology
姜小舟醫師 基督教聯合那打素社康服務註冊中醫師	Dr. Jiang Xiao Zhou Chinese Medicine Practitioner, United Christian Nethersole Community Health Service
黃梓祥醫生 骨科專科醫生	Dr. Wong Tsz Cheung Specialist in Orthopaedics
陳建凌醫生 伊利沙白醫院急症室副顧問醫生	Dr. Chan Kin Ling Assistant Consultant, A&E Department, Queen Elizabeth Hospital
鄭珮欣小姐 大埔醫院物理治療師	Ms. Cheng Pui Yan Physiotherapist, Tai Po Hospital
黎詠虹醫師 香港防癆會中醫診所暨香港大學中醫臨床 教研中心（香港仔）	Dr. Lai Wing Hung The Hong Kong Tuberculosis Association Chinese Medicine Clinic cum Training Centre of the University of Hong Kong (Aberdeen)
張杰能博士 基督教聯合那打素社康服務註冊中醫師	Dr. Cheung Kit Nung Chinese Medicine Practitioner, United Christian Nethersole Community Health Service
曾鳳珊醫師 香港防癆會中醫診所暨香港大學中醫臨床 教研中心（香港仔）	Dr. Tsang Fung San The Hong Kong Tuberculosis Association Chinese Medicine Clinic cum Training Centre of the University of Hong Kong (Aberdeen)
羅金亮醫生 北區醫院急症室顧問醫生	Dr. Law Kam Leung Consultant, A&E Department, North District Hospital
李智豪醫生 臨床助理教授 內分泌及糖尿專科醫生	Dr. Lee Chi Ho Clinical assistant professor Specialist in Endocrinology & Diabetes
孔笑珍護師 糖尿科專科護士	Ms. Hung Siu Chan Diabetes Clinical Nurse
洪美清女士 香港心理衛生會李鄭屋宿舍服務經理	Ms. Hung Mei Ching Service Manager, Lei Cheng Uk House, The Mental Health Association of Hong Kong
文鎮邦先生 東區尤德夫人那打素醫院一級物理治療師	Mr. Man Chun Pong Physiotherapist I, Pamela Youde Nethersole Eastern Hospital
羅曼詩小姐 基督教聯合那打素社康服務 社區營養服務 / 高級社區營養師	Ms. Lo Man Sze Senior Community Nutritionist, Community Nutrition Service, United Christian Nethersole Community Health Service
周光煜醫師 香港防癆會暨香港大學中醫臨床 教研中心（香港仔）	Dr. Chow Kwong Yuk The Hong Kong Tuberculosis Association - The University of Hong Kong Clinical Centre for Teaching and Research in Chinese Medicine (Aberdeen)
鍾偉成先生 行政總裁	Mr. Chung Wai Shing Chief Executive Officer
李春小姐 總編輯	Ms. Printemps Lee Chief Editor
Agnes 特約記者	Agnes Freelance Reporter
Natalie 攝影師	Natalie Photographer
Yin 設計師	Yin Designer
Visionaire 發行及印刷	Visionaire Publishing & Printing

十五周年紀念活動特別鳴謝
郁德芬博士 BBS, JP 香港社會企業總會會長 Dr. Alice Yuk, Tak Fun, BBS, JP Chairman of Hong Kong General Chamber of Social Enterprises Ltd.
陳肇始教授 JP 食物及衛生局局長 Prof. Sophia Chan, JP Secretary for Food and Health
徐英偉先生 JP 勞工及福利局副局長 Mr. Caspar Tsui, JP Under Secretary for Labour and Welfare
雀巢健康科學 Nestlé Health Science
滙寶醫療用品配套有限公司 Solutions Health Care Products & Services Ltd.

聯絡我們

Contact Us

總公司

九龍觀塘鴻圖道 16 號志成工業大廈 12 樓 1206 室
電話 : 2710 8860 傳真 : 2710 8210

Head Office

Room 1206, 12/F, Houtex Industrial Building, 16 Hung To Road, Kwun Tong, Kowloon
Tel: 2710 8860 Fax: 2710 8210

「卓思廊」便利店 / 復康店
"Cheers Gallery" Convenience Store/Rehab Shop

「卓思廊」北區醫院 24 小時便利店
新界粉嶺保健路 9 號北區醫院地下大堂
電話 : 2669 7959 傳真 : 2669 7959
"Cheers Gallery" North District Hospital Convenience Store (24 hrs)
Shop A, G/F Lobby, North District Hospital, 9 Po Kin Road, Fanling, N.T.
Tel: 2669 7959 Fax: 2669 7959

「卓思廊」律敦治醫院 24 小時便利店
香港灣仔皇后大道東 266 號律敦治醫院地庫 3 樓
電話 : 2836 0780 傳真 : 2836 0780
"Cheers Gallery" Ruttonjee Hospital Convenience Store (24 hrs)
LG3, Ruttonjee Hospital, 266 Queen's Road East, Wan Chai, H.K.
Tel: 2836 0780 Fax: 2836 0780

「卓思廊」威爾斯親王醫院便利店
新界沙田銀城街 30-32 號威爾斯親王醫院李嘉誠專科診所北翼地下
電話 : 2645 0333 傳真 : 2645 0333
"Cheers Gallery" Prince of Wales Hospital Convenience Store
G/F, Li Ka Shing Specialist Clinic (North Wing) , Prince of Wales Hospital, 30-32, Ngan Shing Street, Shatin, N.T.
Tel: 2645 0333 Fax: 2645 0333

「卓思廊」大埔醫院便利店
新界大埔全安路 9 號大埔醫院大堂地下
電話 : 2607 6540 傳真 : 2607 6540
"Cheers Gallery" Tai Po Hospital Convenience Store
G012, Main Block, Tai Po Hospital, 9 Chuen On Road, Tai Po, N.T.
Tel: 2607 6540 Fax: 2607 6540

「卓思廊」博愛醫院復康用品專賣店
新界元朗坳頭博愛醫院中座地下大堂
電話 : 2470 7065 傳真 : 2470 7026
"Cheers Gallery" Pok Oi Hospital Rehab Shop
G/F Lobby, Central Wing, Pok Oi Hospital, Au Tau, Yuen Long, N.T.
Tel: 2470 7065 Fax: 2470 7026

「卓思廊」將軍澳醫院復康用品專賣店

九龍將軍澳坑口寶寧里 2 號將軍澳醫院 1 樓
電話：2208 0456 傳真：2209 4764

"Cheers Gallery" Tseung Kwan O Hospital Rehab Shop

1/F, Tseung Kwan O Hospital, 2 Po Ning Lane, Tseung Kwan O, N.T.
Tel: 2208 0456 Fax: 2209 4764

「卓思廊」屯門醫院復康用品專賣店

新界屯門青松觀道屯門醫院主座地下大堂 H 舖
電話：2463 1905 傳真：2463 1906

"Cheers Gallery" Tuen Mun Hospital Rehab Shop

Shop H, G/F Lobby, Tuen Mun Hospital, Tsing Chung Koon Road, Tuen Mun, N.T.
Tel: 2463 1905 Fax: 2463 1906

「卓思廊」瑪麗醫院復康生活幹線

香港薄扶林道 102 號瑪麗醫院 K 座地下
電話：2762 2728 傳真：2762 2728

"Cheers Gallery" Queen Mary Hospital Rehab Links

G/F, Block K, Queen Mary Hospital, 102 Pokfulam Road, H.K.
Tel: 2762 2728 Fax: 2762 2728

「卓思廊」明愛醫院復康生活幹線

九龍深水埗永康街 111 號明愛醫院懷明樓三樓
電話：2242 6313 傳真：2242 6312

"Cheers Gallery" Caritas Medical Centre Rehab Links

3/F, Wai Ming Block, Caritas Medical Centre, 111 Wing Hong Street, Sham Shui Po, Kowloon
Tel: 2242 6313 Fax: 2242 6312

「卓思廊」黃大仙醫院復康生活幹線

九龍沙田坳道 124 號東華三院黃大仙醫院主座 2 樓大堂
電話：2568 2256 傳真：2568 2256

"Cheers Gallery" Wong Tai Sin Hospital Rehab Links

Lobby, 2/F, Main Block, TWGHs Wong Tai Sin Hospital, 124 Shatin Pass Road, Wong Tai Sin, Kowloon
Tel: 2568 2256 Fax: 2568 2256

「卓思廊」復康用品專賣店（南京街）

九龍佐敦南京街 12 號地舖
電話：3586 1525 傳真：3586 1526

"Cheers Gallery" Rehab Shop @ Nanking Street

G/F, 12 Nanking Street, Jordan, Kowloon
Tel: 3586 1525 Fax: 3586 1526

「卓思廊」復康用品專賣店（觀塘）

九龍觀塘偉業街 181 號盈達商業大廈十一樓 A 室
電話：8206 6160 傳真：2710 8322

"Cheers Gallery" Rehab Shop @ Kwun Tong

Flat A, 11/F, Yin Da Commercial Building, 181 Wai Yip Street, Kwun Tong, Kowloon
Tel: 8206 6160 Fax: 2710 8322

「卓思廊」復康生活幹線（協和街）

九龍觀塘協和街 143 號地下
電話：3974 5027 傳真：3974 5097

"Cheers Gallery" Rehab Links @ Hip Wo Street

G/F, 143 Hip Wo Street, Kwun Tong, Kowloon
Tel: 3974 5027 Fax: 3974 5097

「卓思廊」復康生活幹線（窩打老道）

九龍窩打老道 31B 地舖
電話：3709 8798 傳真：3709 8799

"Cheers Gallery" Rehab Links @ Waterloo Road

G/F, 31B Waterloo Road, Kowloon
Tel: 3709 8798 Fax: 3709 8799

餐飲業務 Catering Service

北區醫院「Cheers Café」

新界粉嶺保健路 9 號北區醫院地下大堂
電話：2672 9733 傳真：2672 9733

"Cheers Café" North District Hospital

Shop B, G/F Lobby, North District Hospital, 9 Po Kin Road, Fan Ling, N.T.
Tel: 2672 9733 Fax: 2672 9733

教育局教育服務中心「Cheers Café」

九龍塘沙福道 19 號教育局九龍塘教育服務中心東座平台 02 室
電話：2794 1101 傳真：2794 1102

"Cheers Café" Education Bureau Education Service Centre

EP02, Education Bureau Kowloon Tong Education Services Centre, 19 Suffolk Road, Kowloon Tong, Kowloon
Tel: 2794 1101 Fax: 2794 1102

屯門醫院 Cheers Bakery「喜点」

新界屯門青松觀道屯門醫院主座地下大堂 E 舖
電話：2463 6871 傳真：2463 6872

"Cheers Bakery" Tuen Mun Hospital

Shop E, G/F Lobby, Tuen Mun Hospital, Tsing Chung Koon Road, Tuen Mun, N.T.
Tel: 2463 6871 Fax: 2463 6872

黃大仙醫院「Cheers Café」

九龍黃大仙田坳道 124 號黃大仙醫院 A 座 1 樓
電話：2404 0760 傳真：2690 5090

"Cheers Café" Wong Tai Sin Hospital

Level 1, Block A, TWGHs Wong Tai Sin Hospital, 124 Shatin Pass Road, Wong Tai Sin, Kowloon
Tel: 2404 0760 Fax: 2690 5090

廣華醫院「Cheers Café」

九龍油麻地窩打老道 25 號廣華醫院 2 樓中座

"Cheers Café" Kwong Wah Hospital

2/F, Central Stack, Kwong Wah Hospital, 25 Waterloo Road, Yau Ma Tei, Kowloon

「復康速遞」直銷業務 "Rehab Express" Direct Sales Service

「復康速遞」訂購

九龍觀塘偉業街 181 號盈達商業大廈十一樓 A 室
訂購熱線：8206 6160 訂購傳真：2710 8322
網站訂購：www.rehabexpress.com.hk

"Rehab Express" Ordering

Flat A, 11/F, Yin Da Commercial Building, 181 Wai Yip Street, Kwun Tong, Kowloon
Order Hotline: 8206 6160 Order Fax: 2710 8322
Order Online: www.rehabexpress.com.hk

《復康速遞》雜誌

九龍觀塘鴻圖道 16 號志成工業大廈 12 樓 1206 室
電話：2710 8860 傳真：2710 8210

"Rehab Express" Magazine

Room 1206, 12/F, Houtex Industrial Building, 16 Hung To Road, Kwun Tong, Kowloon
Tel: 2710 8860 Fax: 2710 8210

機構消費計劃 Organizational Consumption Project

醫院管理局職員合作社

九龍亞皆老街 147B 醫院管理局大樓 207S 室

電話 : 2300 6981 傳真 : 2194 6867

Hospital Authority Staff Co-op Shop

Room 207S, Hospital Authority Building, 147B Arygle Street, Kowloon

Tel: 2300 6981 Fax: 2194 6867

「樂協」社團優惠坊

銅鑼灣軒尼詩道 423-425 號嘉年華商業大廈 2 樓

電話 : 2264 8027 傳真 : 2264 8029

Cheers Co-op

2/F, Ka Nin Wah Commercial Building, 423-425 Hennessy Road, Wan Chai, Hong Kong

Tel: 2264 8027 Fax: 2264 8029

「悅購網」

「悅購網」網上商店 : www.cheerspointnet.com.hk

"Cheers Point Net"

"Cheers Point Net" Online Shop : www.cheerspointnet.com.hk

社企淘 : www.SEall.hk

SE Mall : www.SEall.hk

「卓思」市場推廣服務

九龍觀塘鴻圖道 16 號志成工業大廈 12 樓 1206 室

電話 : 2710 8860 傳真 : 2710 8210

"Cheers" Marketing & Promotion Service

Room 1206, 12/F., Houtex Industrial Building, 16 Hung To Road, Kwun Tong, Kowloon

Tel: 2710 8860 Fax: 2710 8210

傳單速遞

九龍觀塘鴻圖道 16 號志成工業大廈 12 樓 1206 室

電話 : 2710 8860 傳真 : 2710 8210

Handbill Service

Room 1206, 12/F., Houtex Industrial Building, 16 Hung To Road, Kwun Tong, Kowloon

Tel: 2710 8860 Fax: 2710 8210

清潔業務

九龍觀塘鴻圖道 16 號志成工業大廈 12 樓 1206 室

電話 : 2710 8860 傳真 : 2710 8210

Cleaning Service

Room 1206, 12/F., Houtex Industrial Building, 16 Hung To Road, Kwun Tong, Kowloon

Tel: 2710 8860 Fax: 2710 8210

香港心理衛生會

www.mhahk.org.hk

明途聯繫有限公司

www.mentalcare.com.hk

