



明途聯繫
SUBSIDIARY OF MHAHK
MENTALCARE

逆境出來的力量 **STRENGTH THROUGH ADVERSITY**

19-20 ANNUAL REPORT 年報



逆境出來的力量

STRENGTH THROUGH ADVERSITY

19-20 ANNUAL REPORT 年報



明途聯繫有限公司成立於2002年，以社會企業模式經營便利店、復康用品專賣店、「復康速遞」直銷業務，市場推廣服務、網購、餐飲業務、清潔服務及機構消費計劃，以商業營運模式致力為殘疾人士及弱勢社群創造就業機會，讓他們更有尊嚴地融入社會工作。

MentalCare Connect Co Ltd was established in 2002. We create job opportunities for the disabled and disadvantaged people via operating social enterprises through the business such as Convenience Stores, Rehab Shops, "Rehab Express" Direct Sales Service, Marketing & Promotion Service, Online Shopping Platform, Catering Service, Cleansing Service and Organizational Consumption Project, to let them re-integrate into the working environment of the society with dignity.

目錄

CONTENTS

01	願景、使命與核心價值	Vision, Mission & Core Values
02	主席序言	Foreword by the Chairman
04	行政報告	Executive Report
06	組織架構	Organizational Chart
07	員工團隊	Staff Team
10	社會效益亮點	Social Impact Highlights
12	業務版圖	Business Presence
14	主要業務	Major Operations
36	員工參與及成就	Employee Participations & Achievements
40	企業成就	Corporate Achievements
44	交流分享及媒體報導	Sharing & Media Coverage
50	財務回報2019-2020	Financial Return 2019-2020
51	核數報告2019-2020	Audit Reports 2019-2020
53	鳴謝	Acknowledgement
57	聯繫我們	Contact Us

願景、使命與核心價值

VISION, MISSION & CORE VALUES

願景

每一個人都應該擁有平等且具尊嚴的就業機會。

Vision

Everyone should have an equal and dignified employment opportunity.

使命

- 以社會企業模式為殘疾人士及弱勢社群創造具尊嚴的就業機會，並且促進工作間的精神健康。
- 推動社會企業的可持續發展和推廣「幫襯社企」運動。
- 經營溢利會全數重投於業務的未來發展。

Mission

- To create employment opportunities with dignity for the disabled and disadvantaged people through social enterprise model and further promote the mental health in workplace.
- To enable the self-sustainability of social enterprises and promote "Buy Social" Movement.
- All operation profits will be reinvested in the future business development.

核心價值 Core Values

團隊精神
Team Spirit

工作承諾
Commitment

持續學習
Continuous Learning

以人為本
People-oriented

創新思維
Innovation

主席序言

FOREWORD BY THE CHAIRMAN

黎守信醫生

明途聯繫有限公司董事會主席

Dr. Benjamin Lai

Chairman

Board of Director of

MentalCare Connect Company Limited



過去一年，香港經歷了幾十年來從未遇過的動盪。我們不僅遇到了本地事件，包括社會運動、互聯網自主報導的新聞、信息過載、觀點兩極化、人與人之間因不同的見解和觀念所產生的撕裂、產業停止運作、旅遊業停滯發展和經濟衰退。另外，我們還須面對國際問題，如中、美之間的貿易戰及技術爭端。除此之外，整個世紀從沒遇過的新冠肺炎疫情大流行亦影響了全世界，包括我們的祖國中國和香港特別行政區。雖然香港沒有實施全面封鎖，但因應疫情推行遏制傳播鏈的措施，例如學校停課，康樂及運動場地暫停開放，鼓勵在家工作，同時亦實施社會限聚令，以致某些行業亦需停業，營業時間及顧客人數大受影響。過去來往香港頻繁的空運、海運和陸路運輸交通亦減至新低。不論年齡、性別、職業和家庭背景，市民的日常生活均受到不同程度的影響。不同的壓力因素，長時間受壓對個人的免疫力來說是一大挑戰，也無可避免地對個人的心理健康造成考驗。但從另一個角度來說，它亦可以被視作是對個人忍耐、經驗、思維、感覺、技能、全新適應及互相支援彼此關係的嶄新發展時代。「明途聯繫」亦與普羅大眾一樣，面對不同的考驗和挑戰。

作為香港心理衛生會附屬的社會企業，「明途聯繫」的雙底線是實現財務可持續性並肩負社會責任，為弱勢群體提供就業和培訓機會，並營造有利於相互支持及正向發展的精神健康工作間。多年來的營運經驗正正反映要持守這道雙底線並非易事。而過去一年，社會動盪令這項任務變得舉步維艱。

Hong Kong had faced a turbulent year that had not been experienced for decades. We encountered not only local issues including social unrest, automatic internet driven news, information overload, dichotomy of views, segregation of people with separate attitude and belief, interruption of business, disruption of the tourist industry and economic downturn. We had to face international issues including the trade war and the disputes in technology between China and the United States. On top of these COVID-19 pandemic, one that had not been met for a century, struck the world, including our mother country China and Hong Kong SAR. While locally we did not have a complete lockdown, a number of measures were implemented to stop the chain of infection. For example, schools were suspended, recreational and sports venues were closed, home offices were encouraged, social restriction order was put in place, certain business sectors were suspended, and business hours and number of persons allowed were restricted. The usually enormous number of people passing in and out of Hong Kong by air, by sea and on land disappeared. Irrespective of one's age, gender, occupation and family background, daily life is affected to various extents. The combination of these stressors for such a prolonged period of time is a test of a person's coping, resilience and reserve, and inevitably a challenge to a person's mental health. From another angle, it can be seen as a time for growth and development of one's patience, experience, thinking, feelings, skills, new ways of coping, and development of mutual support and relationship. "MentalCare Connect" is put to the test and challenge like everyone else.

As a social enterprise under The Mental Health Association of Hong Kong, our double bottom lines are to achieve financial sustainability and shoulder social responsibilities. The Company is to provide employment and training opportunities for the disadvantaged persons, and to promote a working environment facilitating the development of mutual support and positive mental health. To meet both bottom lines has not been an easy task as we have experienced over the years. The task is not made easier with the turbulence in the past year.



受惠於政府對商界及時的財政援助，以及公司員工的努力，以致公司業務得以維持，我很高興分享過去一年公司的持續增長和發展。比對去年，「明途聯繫」本年度的營業額達HK\$16,800,000，增長約8%，淨利潤約為HK\$1,000,000。公司將繼續經營醫院的零售網絡，並積極將業務開拓至社區。「明途聯繫」將繼續與其他社會企業共同努力，推廣企業社會責任和支持弱勢群體。

2003年2月，非典型肺炎在本地一家醫院流傳時，大眾感到困惑並討論感染是否只是醫院內部的單一事件，抑或可能已傳播至社區。那是一段痛苦的經歷。來到2020年2月，當知道新冠肺炎時，市民已自動戴上口罩防疫，口罩亦迅速售罄。大眾以至衛生部門並沒有掉以輕心，相信市民在充份準備下定能克服疫情。

我謹代表董事會感謝民政事務局、社會福利署、醫院管理局、各供應商，名譽顧問和其他持份者對「明途聯繫」持續的支持和提點。董事會感謝鍾偉成先生及其團隊為公司成功作出的貢獻和努力。我謹感謝董事會成員對公司作出的精闢獨到的見解和不斷的支持。

Thanks to the timely financial support by the Government to business sectors as well as the dedication and the hard work of the staff, "MentalCare Connect" does not only able to maintain its business in the adverse environment. I am pleased to share with you the continuing growth and development of the Company over the past year. The turnover of the business of Company has grown to HK\$16,800,000 in the year with a growth of around 8% over the previous year and the net profit of the Company in the year is around HK\$1,000,000. While the Company will maintain its business outlets inside the hospitals, it is expanding its shops outside of the hospitals. It will continue the joint efforts with other social enterprises in the promotion of corporate social responsibilities and support of the disadvantaged persons.

It was strange feelings in February 2003 when SARS developed in a hospital locally when there were debates whether the infection was only a single hot spot inside a hospital or the infection might spread to the community. We had a bitter experience then. It was natural that by February 2020 when COVID-19 was known, masks were worn and sold out rapidly. The local community and the local health care sector did not take it lightly. Challenges are for the prepared to overcome.

On behalf of the Board I would like to thank the Home Affairs Bureau, Social Welfare Department, the Hospital Authority, suppliers, honorary advisors and other stakeholders for their continual support and advice to the Company. The Board is grateful to Mr. Chung Wai Shing and his staff for their dedication and hard work for the success of the Company. I wish to thank members of the Board for their insightful advice and untiring support to the Company.

行政報告

EXECUTIVE REPORT



鍾偉成先生

明途聯繫有限公司行政總裁

Chung Wai Shing

CEO

MentalCare Connect Co Ltd



不少創業家都是悲觀的積極者，看事情經常看得較悲觀，但卻會積極解決問題，化危為機！或許這種兩極特質在生意的經營和管理上也有一定的好處，特別是在風險管理和超前思維下的策略制訂。過去一年受社會運動和新冠肺炎疫情影響，無論人際關係、社會政經和營商環境都起着急遽變化，要保持冷靜樂觀實在有點天真；但要麼坐以待斃，抑或正向積極地面對，全在一念之間。就是這一念，「明途聯繫」上下同事都「動」起來，成就了連續8年錄得淨利，僱員人數也持續增長！這可說是「逆」境出來的力量。為回饋員工，是年再次發放年終特別獎金，以資獎勵！

財務表現

2019-2020年度，公司總收入為HK\$168,210,113，同比增長約8.1%，與上年度的增長率相若。其中「創業展才能」計劃及「伙伴倡自強」社區協作計劃共資助HK\$1,567,094作為多項社企項目的種子基金，約佔整體收入的0.93%，公司稅後盈利為HK\$1,032,603，是年稅務支出為HK\$105,221。營運收入增加主要是近年在社區開設的店舖均座落於民生區域，鄰近醫院，雖然面對過去一年的社會運動和新冠肺炎疫情的爆發，但仍能保持穩定的營收，個別店舖更有可觀增長。若非醫院實施「緊急級別」應變措施，致令醫院的零售及餐飲店舖在2-3月期間收入大幅下跌四成及八成，是年度的營業額和盈利將可更上一層樓。

Many entrepreneurs are pessimistic doer, they will gloomily approach incidents and actively seek for solutions. The problem was then solved and the crises were turned into opportunities! Perhaps these extreme characteristics render certain benefits in business operations and managements, particularly in risk management and forward-thinking strategy formulation. In the past year, the social movement and coronavirus pandemics affected our lives drastically in terms of interpersonal relationships, social-political and business environment. Such unprecedented condition is particularly hard for one to remain calm and optimistic. In this situation, we may resign to our own fate or proactively tackle the hard times. It all comes in one thought. "MentalCare Connect" has chosen to stand up and find way forwards in this tough moment. The Company records 8 years profit in a row, along with the growing workforce. Such result was originated from the strike against the adverse situation. In order to reward our dedicated staff, "MentalCare Connect" had been continue to release special year-end bonus this year.

Financial Performance

In 2019-2020, the total revenue of "MentalCare Connect" generated was HK\$168,210,113, an increase of approximately 8.1% year-on-year. The growth rate was about the same as compared with last year. Among them, the seed funds from "Enhancing Employment of People with Disabilities through Small Enterprise Project" and "Enhancing Self-Reliance through District Partnership Programme" were sum up as HK\$1,567,094, accounting for 0.93% of the overall income. The tax payable for the income was HK\$105,221. The increase in operating income is largely due to the opening of retail outlets in the community in recent years where the public hospital was in the vicinity. The revenue generation was stable and some shops even recorded positive growth, regardless of the social movement and the spread of coronavirus in the past year. The hospital implemented "Emergency Level" led to the drop of 40% and 80% in our retail and catering businesses respectively in the public hospitals, within February and March, 2020. Otherwise, this year's turnover and profit should be more magnificent.

履行核心價值

至2020年三月止，「明途聯繫」營運中的社企數目達32個，共聘用183位僱員，其中112位來自弱勢社群（102位精神病康復者），佔僱員人數的61%。是年度各機構轉介到公司及轄下店舖實習的學員達333人次。在推廣「幫襯社企」運動方面，公司透過「社企淘」網購平台及「利群採購券」繼續鼓勵企業及公眾人士以消費支持社企的可持續發展，另外亦舉辦企業伙伴共益系列之「工作間精神健康急救暨利群採購頒獎禮」，藉此表揚合作伙伴在責任採購方面的貢獻。

業務發展

去年「明途聯繫」新開四間店舖，包括「卓思廊」瑪嘉烈醫院復康生活幹線及荔景大樓便利店，「樂協」社團優惠坊（稅務大樓）及「卓思廊」復康生活幹線（街市街），但同期「卓思廊」復康生活幹線（黃大仙醫院），Cheers Café（黃大仙醫院）及Cheers Café（廣華醫院）卻分別因重新招標而喪失經營權。近年，公司積極發展街舖就是要避免店舖過份集中在醫院所引致的經營風險，包括店舖約滿重新招標及流感疫症帶來的醫療風險。

2020-2021年度是「明途聯繫」Mission 2020最後一年，公司將趁社會運動和新冠肺炎疫情導致商舖租金下調的契機，在社區尋找合適的舖位開設復康店及Cheers Café，為弱勢社群創造更多就業機會。

數據顯示網購的營業額比上年度有可觀增長，相信是市民大眾受社會運動和疫情的影響致經常留在家中引發的購物新常態，因此公司將加強線上線下的營銷及整合以提升顧客的忠誠度和滿意度。

展望

執筆時香港的疫情依然反覆，這個席捲全球的災害未有緩和跡象，可預見經濟會持續下滑，失業率和貧窮問題會持續上升，或許這也是社企發揮更大功能的時候。「明途聯繫」將一如既往整合社會及內部資源以履行使命。在此特別感謝每一位店舖員工，他們在疫情期間仍堅守崗位為病友及市民大眾提供優質的零售及餐飲服務。同時，感謝董事會對本人的信任和支持，對公司上下員工的關懷和慷慨！

Core Mission Implementation

As of March 2020, "MentalCare Connect" operates 32 social enterprises projects. The Company employs a total of 183 employees, of which 112 are disadvantaged groups of people (102 of them were mentally disabled). This accounts for 61% of the total number of staff. 333 trainees were referred by various organisations to the Company for placement. In promoting the "Buy Social" Movement, "MentalCare Connect" encourages the corporate and public to support the sustainability of social enterprises via the "SE Mall" online shopping platform and "SE coupons". The Company also organised "Business Partner Engagement Series: Mental Health First Aid in Workplace cum Social Procurement Award Presentation Ceremony" for recognising the contribution of its business partners in social procurement.

Business Development

Last year, "MentalCare Connect" opened four new stores, including "Cheers Gallery" Princess Margaret Hospital Rehab Links, "Cheers Gallery" Lai King Building Convenience Store, "Cheers Coop" (Revenue Tower) and "Cheers Gallery" Rehab Links at Market Street. At the same time, we lost the operations of "Cheers Gallery" Wong Tai Sin Hospital Rehab Link, Cheers Café at Wong Tai Sin Hospital & Kwong Wah Hospital in the re-tendering exercises. In recent years, the Company develops the network of street front shop, for spreading the operating risks in hospitals especially the re-tendering exercises and medical risks due to the influenza and related disease.

2020-2021 marks the last year of "Mission 2020". The Company will further develop its street front retail network by opening Rehab Shop and Cheers Café, especially due to the predicted downturn of shop rental due to the social movement and pandemic. This further enhances the creation of job opportunities to disabled and disadvantaged groups of people.

Our in-house figures show that the turnover from online platform record a significant increase as compared with last year. It is believed that the shopping pattern was skewed from conventional to online one, because of the social movements and pandemics. Shoppers will stay more time at home. The Company will thus strengthen the online and offline marketing strategies for further integrating and enhancing customers' loyalty and satisfaction.

Future

The situation of COVID-19 outbreak in Hong Kong remains volatile amid my preparation of Executive Report. The global disaster shows no signs of relieving either. It is predicted that the economy will continue to decline, unemployment rate and poverty will continue to worsen. Perhaps this is also the critical time for social enterprises to perform greater functions. "MentalCare Connect" will continue to integrate social and internal resources to live up our mission. I would like to express my special gratitude to my frontline staff who committed to their work with providing high-quality retail and catering services to patients and the general public. At the same time, I would like to thank the board of directors for their trust and support to me, and for their care and generosity to the staff of "MentalCare Connect".

組織架構

ORGANIZATIONAL CHART

香港心理衛生會執行委員會 Executive Committee of The Mental Health Association of Hong Kong

明途聯繫有限公司董事會 Board of Directors of MentalCare Connect Co., Ltd

主席：
Chairman：



黎守信醫生
Dr. Benjamin Lai

董事：
Directors：



盧德臨醫生
Dr. Lo Tak Lam



梁士雄先生
Mr. Carlos Leung



黃銘光醫生
Dr. Wong Meng Kong



潘佩瑤醫生
Dr. Pan Pey Chyou



蕭敏康博士
Dr. Andrew Siu

公司義務秘書：
Hon. Secretary：



鍾偉成先生
Mr. Chung Wai Shing

列席：
In attendance：



香港心理衛生會總幹事 何惠娟女士
Ms. Kimmy Ho
(Director of The MHAHK)

明途聯繫有限公司 MentalCare Connect Co. Ltd.

行政總裁：鍾偉成先生
Mr. Chung Wai Shing (Chief Executive Officer)



員工團隊

STAFF TEAM



行政總裁 Chief Executive Officer

鍾偉成先生 Mr. Chung Wai Shing

高級經理 Senior Managers

金保華小姐 (零售營銷) Ms. Winnie Kam (Retail Marketing)

董永恆先生 (企業營銷) Mr. Philip Tung (Corporate Marketing)

黃子卓先生 (行政) Mr. Dobe Wong (Administration)

黃秀花小姐 (財務及人力資源) Ms. Christine Wong (Finance and Human Resources)

業務經理 Business Manager

陳彩嫻小姐 Ms. Aggie Chan

蔡曉東先生 Mr. Tony Choy

陳玉鳳小姐 Ms. Corinna Chan

鄭家俊先生 Mr. Kevin Cheng

王國榮先生 Mr. Dennis Wong

助理經理 Assistant Manager

伍偉照先生 (市場營銷) Mr. Wilfred Ng (Sales & Marketing)

鍾妙瑩小姐 (企業營銷) Ms. Miu Chung (Corporate Marketing)

陳倩嫻小姐 (會計) Ms. Annis Chan (Accounts)

王佩珊小姐 (市場營銷) Ms. Rosetta Wong (Sales & Marketing)

關嘉穎小姐 (人力資源) Ms. Wing Kwan (Human Resources)

企業營銷/財務/資訊科技及物流高級主任

Corporate Sales/Retail Marketing/Finance and Human Resources/ Information Technology & Logistic Senior Officer

李詩敏小姐 Ms. Mandy Lee

朱銘禧先生 Mr. Tony Chu

梁孟威先生 Mr. Barry Leung

劉家業先生 Mr. Tony Lau

企業營銷/零售營銷/財務及人力資源/行政/資訊科技及物流主任

Corporate Sales/Retail Marketing/Finance and Human Resources/Administration/ Information Technology & Logistic Officer

李 春小姐 Ms. Printemps Lee

蕭笑慧小姐 Ms. Ada Siu

唐佩斯小姐 Ms. Teresa Tong

李寶雯小姐 Ms. Amy Li

陳家榮先生 Mr. Chan Ka Wing

許嘉略先生 Mr. David Hui

樊燕玲小姐 Ms. Anita Fan

梁惠貞小姐 Ms. Rabi Leung

員工團隊

STAFF TEAM

店務主任

盧靜寧小姐 Ms. Loo Ching Ning
潘志偉先生 Mr. Pan Chi Wai
李 萍小姐 Ms. Lee Ping
紀式雄先生 Mr. Kei Sik Hung
李玉英小姐 Ms. Lee Yuk Ying
劉景浩先生 Mr. Lau King Ho
倪鎮惠先生 Mr. Ngai Chun Wai
黃桂萍小姐 Ms. Wong Kwai Ping
何美蓮小姐 Ms. Ho Mei Li
殷敏琪小姐 Ms. Yan Man Ki
林映余小姐 Ms. Lam Ying Yu
馮成滔先生 Mr. Fung Shing To
黃少娟小姐 Ms. Wong Siu Kuen
李偉光先生 Mr. Li Wai Kwong

吳婉兒小姐 Ms. Ng Yuen Yee
杜健鴻先生 Mr. To Kin Hung
謝寶珍小姐 Ms. Tse Po Chun
劉家傑先生 Mr. Lau Kar Kit
陳秀麗小姐 Ms. Chan Sau Lai
關景雲先生 Mr. Kwan King Wan
何茂娥小姐 Ms. Ho Mau Ngor
張宇岸先生 Mr. Cheung Yu Ngon
林月娥小姐 Ms. Lam Yuet Ngor
文玲君小姐 Ms. Man Ling Kwan
梁偉榮先生 Mr. Leung Wai Wing
陳筱萍小姐 Ms. Chan Siu Ping
徐寶蟬小姐 Ms. Chui Bo Sim
高思敏小姐 Ms. Ko Sze Man





社會效益亮點 (2002-2020)

SOCIAL IMPACT HIGHLIGHTS (2002-2020)

HK\$1,237,126,138

歷年營運收入
Accumulated Total Revenue

HK\$1,718,900

歷年《復康速遞》對外
慈善贊助 (77期累計)
"Rehab Express" Magazine
Sponsored for Charity
(Accumulated for 77 issues)

2,018

歷年弱勢僱員數目
No. of
Accumulated
Disabled
Employees

HK\$3,701,513

歷年採購社企及
庇護工場產品
Responsible Procurement
for SE and Sheltered
Workshops Over
the Years

2,862

歷年僱員人數
No. of
Accumulated
Employees

HK\$22,282,624

歷年政府種籽基金資助
Accumulated Grant
from Government



HK\$168,210,113

2019-2020營運收入
Annual Revenue

333

(2019-2020)
為殘疾人士提供
實習崗位數目
No. of placement
provided
to disabled persons

HK\$93,016,454

歷年發放給弱勢
僱員薪酬
Accumulated Salary
to Disabled
Employees

32

營運中社企
項目總數
No. of Operating
SE projects

1,660,000

歷年《復康速遞》讀者
人數 (77期累計)
No. of Readers of "Rehab Express"
Magazine (Accumulated for 77 issues)

HK\$95,249,600

歷年減省社會成本
Reduced Social Cost
Over the years

業務版圖

BUSINESS PRESENCE



「卓思廊」北區醫院24小時便利店
 "Cheers Gallery" North District Convenience Store(24 hrs)

「卓思廊」威爾斯親王醫院便利店
 "Cheers Gallery" Prince of Wales Hospital Convenience Store

「卓思廊」律敦治醫院24小時便利店
 "Cheers Gallery" Ruttonjee Hospital Convenience Store(24 hrs)

「卓思廊」大埔醫院便利店
 "Cheers Gallery" Tai Po Hospital Convenience Store

「卓思廊」荔景大樓便利店
 "Cheers Gallery" Lai King Building Convenience Store



「卓思廊」博愛醫院24小時復康店 | 便利店
 "Cheers Gallery" Pok Oi Hospital Rehab Shop | Convenience Store(24 hrs)

「卓思廊」將軍澳醫院復康用品專賣店
 "Cheers Gallery" Tseung Kwan O Hospital Rehab Shop

「卓思廊」屯門醫院復康用品專賣店
 "Cheers Gallery" Tuen Mun Hospital Rehab Shop

「卓思廊」復康用品專賣店 (南京街)
 "Cheers Gallery" Rehab Shop (Nanking Street)

「卓思廊」瑪麗醫院復康生活幹線
 "Cheers Gallery" Queen Mary Hospital Rehab Links

「卓思廊」瑪嘉烈醫院復康生活幹線
 "Cheers Gallery" Princess Margaret Hospital Rehab Links

「卓思廊」明愛醫院復康生活幹線
 "Cheers Gallery" Caritas Medical Centre Rehab Links

「卓思廊」廣華醫院復康生活幹線
 "Cheers Gallery" Kwong Wah Hospital Rehab Links

「卓思廊」復康生活幹線(協和街)
 "Cheers Gallery" Rehab Links (Hip Wo Street)

「卓思廊」復康生活幹線(窩打老道)
 "Cheers Gallery" Rehab Links(Waterloo Road)

「卓思廊」復康生活幹線(街市街)
 "Cheers Gallery" Rehab Links(Market Street)

北區醫院「Cheers Café」
 Cheers Café@North District Hospital

教育局教育服務中心「Cheers Café」
 Cheers Café@ESC

醫院管理局職員合作社
 Hospital Authority Staff Co-op Shop



「樂協」社團優惠坊(銅鑼灣)
 Cheers Coop (Causeway Bay)

「樂協」社團優惠坊(稅務大樓)
 Cheers Coop (Revenue Tower)

「樂協」社團優惠坊(入境事務大樓)
 Cheers Coop (Immigration Tower)



主要業務

MAJOR OPERATIONS

零售業務 Retail Business

「卓思廊」零售網絡

"Cheers Gallery" Retail Network

Cheers Gallery
卓思廊

「卓思廊」零售網絡已增至16家，包括12間於公營醫院及4間於社區的店舖。業務由公營醫院成功擴展至不同社區。

The retail network of the "Cheers Gallery" has increased to 16 and covers 12 public hospitals and 4 shops in community. The business has been successfully extended from public hospitals to different communities.

於2020年3月新增荃灣街市街「復康生活幹線」，同年12月將擴展至港島區筲箕灣，開拓第5間社區店舖。

The new "Cheers Gallery" located in Tsuen Wan was opened in March 2020. In December the same year, "MentalCare Connect" will open its fifth "Cheers Gallery" at Shau Kei Wan.

銷售產品超過一萬多款。

Over 10,000 types of products selling in Cheers Gallery.

「卓思廊」零售網絡

"Cheers Gallery" Retail Network



營業額

Sales turnover

HK\$83,511,491



銷售貨品種類
(SKU)

超過Over 10,000



供應商數目

No. of Supplier

超過Over 600



卓思廊會員人數

No. of Cheers Club members

超過Over 40,000





未來，「卓思廊」會繼續為顧客搜羅更多不同類型的復康產品，提供更貼心的服務，滿足大眾的需求。

In the future, "Cheers Gallery" will continue to provide customers with more different categories of rehab products and provide more intimate services to meet our customers' needs & expectations.

業務發展

Business Development

過往一年公司與「葛蘭素史克」緊密合作，開展醫院內市場推廣服務，發揮公司多年來在醫院網絡建立的宣傳渠道及產品專業知識，為客戶鞏固及開拓目標顧客群。

The Company actively engages with GlaxoSmithKline to implement a marketing service with exploring and development new target segments with utilizing the established hospital network and promotional channels as well as its sophisticated product knowledge.



醫院展銷數量
No. of Hospital Booth
51



主要業務

MAJOR OPERATIONS



機構消費計劃

Organizational Consumption Project

實體店

Physical Shop

公司在政府透過產業署推出的「關愛社會的租務安排」計劃下成功投得灣仔稅務大樓地下2號舖的經營權，於2019年8月開設「樂協」社團優惠坊(稅務大樓)分店，銷售多元化的生活百貨，店內同時設有「社企淘」專區，特意為社企產品及服務新增銷售、推廣及提貨點。The Company successfully owns the right to operate Shop No. 2 on the Ground Floor of the Revenue Tower at Wan Chai under the "Socially Caring Leasing Arrangement" launched by the Government Property Agency. In August 2019, the Company opened "Cheers Coop" (Revenue Tower) to merchandize diversified daily necessities. The shop also set up a "SE Mall" counter which provides a new channel for selling, promoting and acting as a redeem point for products and services of social enterprises.



機構消費計劃 (實體店及網上商店)

Organizational Consumption Project (Physical Shop and Online Shops)

銷售數量 No. of Good Sold



禮券
Coupon
410,191



家居用品
Household
96,986



食品
Food
192,139



文具及紀念品
Stationery & Souvenir
2,972



復康產品
Rehab Product
140,322



社企淘
SE Mall
1,819



個人護理
Personal Care
120,340



「樂協」社團優惠坊(稅務大樓)於2019年10月25日舉行開幕禮，當天邀請了行政會議成員林正財醫生，SBS, JP、香港社會企業總會主席郁德芬博士，BBS, JP，擔任開幕典禮的主禮嘉賓。當天除了進行開幕剪綵儀式外，更邀請到2位社企嘉賓分享與「樂協」合作的經驗，包括「生果媽媽」創辦人關可凝女士及香港職業發展服務處行政總監姚鴻志先生。開幕典禮有接近一百位來自不同界別的嘉賓蒞臨，令場面生色不少。

"Cheers Coop" (Revenue Tower) officially opened on October 25, 2019. Dr. The Honourable Lam Ching-Choi, SBS, JP, member of the Executive Council, and Dr. Alice Yuk, BBS, JP, President of HKGCSE were invited as the officiating guests. In addition, two social enterprise guests Ms. Eunice Kwan, the founder of FruitsMaMa and Mr. Yiu Hung Chi, Executive Director of Hong Kong Employment Development Service are cordially invited to share their experiences in cooperating with Cheers Co-op. There were nearly a hundred guests attending the ceremony to share the joyful moment.



2019-2020年度，機構消費計劃轄下實體店的訂單總商品交易額超過五千七百萬港元，銷售額年度增幅超過百分之六。

The retail shops of Organizational Consumption Project have a total transaction valued over HK\$57 million, which is equivalent to 6% increase as compared with last year.

機構消費計劃將繼續為醫管局及「樂協」社團優惠坊會員帶來方便快捷的購物體驗，務求將最優質的貨品以最優惠的定價回饋會員及顧客。

HA Coop and Cheers Coop under the Organizational Consumption Project will keep bringing novel shopping experiences to the members and shoppers by offering quality goods with privilege offers and packages.

主要業務

MAJOR OPERATIONS

機構消費計劃會員

Membership of Organization

Consumption Project



新增14間加盟機構，累積參與計劃機構達64間，會員人數超過45萬，持續增長的會員人數有利向供應商爭取更佳的貨品價格，讓會員獲得更多優惠。
14 new organizations joined the scheme this year, summing up to 64 participating institutions with more than 450,000 members. The number of member continues to grow and this is critical to bargain for attractive price and offering more privilege to our members.

配合會員機構為員工舉辦主題性及節日性活動，2019年至2020年參與了14場會員機構展銷活動，方便會員選購心水貨品。
In response to the thematic and seasonal activities for staff of member organizations, we participated in 14 corporate bazaars which provide convenience for their staff to purchase favourite products.





機構消費計劃將繼續與不同協會及專業團體聯繫，使更多機構能為其會員帶來優質購物體驗。

The Organizational Consumption Project will liaise with different associations and professional bodies to enable more organizations to enjoy quality shopping experience and further introduce their members.

計劃概畧 Project Particulars



機構消費計劃機構數目
No. of associations / professional bodies
joining the Organizational Consumption
Project

64



機構消費計劃會員總人數
Total no. of members of the
Organizational Consumption
Project

450,000



企業展銷銷售額
Sales Turnover of corporate bazaars

HK\$787,423



主要業務

MAJOR OPERATIONS

利群採購 Social Procurement

公司於2019年4月26日(星期五)於中環中心地下 H6 CONET 舉辦了「業務伙伴共益系列：工作間精神健康急救暨利群採購頒獎典禮」。超過五十位商界、社企界及合作伙伴代表出席，「明途聯繫」邀得母會首席企業培訓顧問黃廷儼先生講解工作間精神急救的要點和步驟，同時邀得合作伙伴恒益物業管理有限公司高級人力資源經理林淑賢女士分享與香港心理衛生會舉辦工作間精神健康講座的實用性和員工的積極參與。

The Company organised "Business Partner Engagement Series: Mental Health First Aid in Workplace cum Social Procurement Award Presentation Ceremony" at H6 CONET, Central Plaza, Central. More than 50 representatives from the business, social enterprise and partners attended the event. "MentalCare Connect" invited Mr. Vincent Wong, Principal Corporate Training Consultant of The Mental Health Association of Hong Kong to share the key points and procedures in conducting Mental Health First Aid in Workplace. Ms. Renate Lam of Hang Yick Properties Management Limited was also invited to share the practicality of the workshops and the popularity among her staff for those Mental Health courses jointly organised with MHAHK.

甚麼是精神健康急救？

若遇當事人出現情緒困擾或精神健康問題，在他未得到專業人士協助前，我們可作的首要介入工作。



大會亦進行了「利群採購」頒獎儀式，並由香港心理衛生會總幹事何惠娟女士頒獎，以表揚合作伙伴積極參與責任採購運動，獎項共分一星、二星及最高級別的三星獎。

After the seminar, Social Procurement Award Presentation Ceremony was held for praising the enthusiasm of MentalCare Connect's working partners, particularly in social procurement. Ms. Kimmy Ho, Director of The Mental Health Association of Hong Kong awarded the prizes to the awardees in the Ceremony. The Award was classified into three categories, 1-Star Award, 2-Star Award and the highest level, 3-Star Award.



業務伙伴共益系列：
「工作間精神健康急救」講座暨「利群採購」嘉許禮

Business Partner Engagement Series:
Mental Health First Aid in Workplace cum
Social Procurement Award Presentation Ceremony



得獎名單如下(排名不分先後)：

The awardees are listed as follows (in arbitrary order):

三星獎：

3-Star Award：

香港賽馬會

Hong Kong Jockey Club

二星獎：

2-Star Award：

畢馬威會計師事務所
香港人壽保險從業員協會
仁安醫院
香港心理衛生會
星展銀行(香港)有限公司
親子王國

KPMG
The Life Underwriters Association of Hong Kong
Union Hospital
The Mental Health Association of Hong Kong
DBS Bank (Hong Kong) Limited
Baby Kingdom

一星獎：

1-Star Award：

恆益物業管理有限公司
勞氏清潔服務有限公司
香港聖約翰救護機構
香港寬頻有限公司
信佳集團管理有限公司
香港基督教女青年會
聖雅各福群會
香港工程師學會
香港中華基督教青年會
康業服務有限公司
豐盛社企學會有限公司
偉邦物業管理有限公司
香港大學傳訊及公共事務處
香港銅鑼灣皇冠假日酒店

Hang Yick Properties Managmenet Limited
Lo's Cleaning Services Ltd
Hong Kong St. John Ambulance
Hong Kong Broadband Network
Serco Group (HK) Limited
The Hong Kong Young Women's Christian Association
St. James' Settlement
The Hong Kong Institution of Engineers
Chinese YMCA of Hong Kong
Hong Yip Service Company Limited
FS&S
Well Born Real Estate Management Limited
Communications & Public Affairs Office, The University of Hong Kong
Crowne Plaza Hong Kong Causeway Bay

業務伙伴共益系列：
「工作間精神健康急救」講座暨「利群採購」嘉許禮

Business Partner Engagement Series:
Mental Health First Aid in Workplace cum
Social Procurement Award Presentation Ceremony



主要業務

MAJOR OPERATIONS

推廣幫襯社企

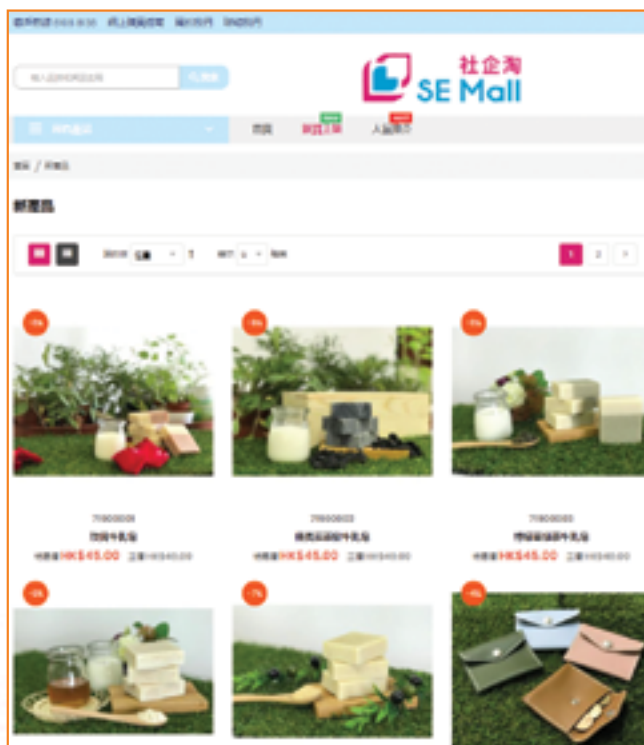
Promotion of "Buy Social" Movement



公司積極推動「幫襯社企」運動，自2017年11月起自資設立「社企淘」網購平台，在推廣此全新品牌上累積廣告贊助接近HK\$400,000，讓公眾可透過清晰鮮明的良心消費平台，從日常生活中實踐社會價值，支持社企可持續發展。現有15間社企加盟「社企淘」，網上銷售產品及服務接近300項。今年在「樂協」社團優惠坊（稅務大樓）加設社企專區及Cheers Pop-up，讓灣仔區的在職人士更直接地認識不同的社企及其產品。

"MentalCare Connect" actively promotes the "Buy Social" Movement by utilising its own resources to set up "SE Mall" in November 2017. Currently the promotional and advertising sponsorship accumulated to nearly HK\$400,000. This enhanced the public to understand ethical consumption through purchase on the "SE Mall" platform and support the sustainable development of Social Enterprise. There are 15 social enterprises joining "SE Mall" and nearly 300 items and services are available. SE Corner and Cheers Pop-up is set up in Cheers Coop (Revenue Tower), enhancing the promotion of SE and their products to the public in Wan Chai area.





CHEERS
PROCUREMENT
利群採購



參與社企數目
Participating SE
15



銷售產品及服務種類
(SKU)
267



向社企贊助廣告金額
Advertising Sponsorship
to SE's
HK\$400,000

主要業務

MAJOR OPERATIONS

電子商務

Electronic Commerce

機構消費計劃

Organizational Consumption Project

機構消費計劃轄下營運三個網購平台—醫院管理局職員合作社網上商店、悅購網、「悅購網」香港賽馬會職員優惠，過去一年因著社會環境轉變，網上購物更為盛行，帶動網購業務全年單訂量仍有穩定增長，較上年度增長超過百分之四。

Organizational Consumption Project operates three online shopping platforms, namely, Hospital Authority Staff E Co-op Shop, Cheers Point Net, "Cheers Point Net" Hong Kong Jockey Club Staff Discount Offers. Due to the change of social environment, our online shops were maintained steady growth in annual order, epitomizing 4% growth in business.





網購平台於2020年初推出手機應用程式，一站式平台提供購物優惠、會員服務、最新資訊、宣傳推廣等功能，方便顧客隨時隨地訂購心水貨品。

Mobile Apps of online shops were launched at the early of 2020. This one-stop platform provides shopping, membership services, latest information and promotion.

機構消費計劃 (網上商店) Organizational Consumption Project (Online Shop)



網購訂單數量
No. of order received
7,686



商品交易額
Monetary value of total transaction
HK\$9,939,415



每宗訂單平均值
Average of transaction per order
HK\$1,293



網購貨品數量
Quantity of goods sold
135,820



訂單送貨次數
No. of delivery service provided
6,675

主要業務

MAJOR OPERATIONS

復康用品網上商店 Rehab Express Online Shop

復康用品網上商店為全港長者及病友提供「一站式」及「直接到戶」的復康用品家居送貨服務，補充日常所需的復康用品。

Rehab Express Online Shop provides a one-stop and "direct-to-home" delivery service for the elderly and patients to supplement the daily rehab products.

只需購物滿\$400便可享有免費網購送貨服務，希望為有需要的病友和照顧者提供貼心服務。

Rehab Express offers free delivery service for making a HK\$400 purchase, this can provide more convenience to patients and their caregivers.

新增Mobile Apps功能，方便客戶能隨時隨地網上購物。

New added "Mobile Apps" function, customer can enjoy the on-line shopping anytime anywhere.

特設「網上下單店舖取貨」功能，提供更靈活的網上購物服務以供客戶選擇。

Customer can collect the ordered goods from selected shops, this can provide more flexibility to our customers.



「復康速遞」直銷業務 "Rehab Express" Direct Sales Service



網購訂單數量
No. of order received
4,988



商品交易額
Monetary value of total transaction
HK\$5,365,198



每宗訂單平均值
Average of transaction per order
HK\$1,075



訂單送貨次數
No. of delivery service provided
4,080

全港最多元化的復康用品網上商店
提供復康用品價格及資訊平台

**The Most Diversified Rehab Product Online Shop
in Hong Kong. A Platform to Provide Price and
Information for Rehabilitation Products**

電話訂購熱線

Order Hotline :
8206 6160

Whatsapp訂購

Order Whatsapp :
5114 4981

傳真訂購熱線

Order Fax :
2710 8322

網站訂購

Order Online :
www.rehabexpress.com.hk

物流及客戶服務

Logistic and Customer Service

物流及客戶服務中心近5,000平方尺場地，提供充裕空間處理日益增加的倉存及物流送量，全面更新的網購平台介面已於2020年11月完成，同事積極聯繫供應商及增加多元化的貨品種類，以持續提升顧客的購物體驗。

The Logistics and Customer Service Centre is approximately 5,000 sq ft in Kwun Tong , rendering ample space to handle the increasing inventory and logistics delivery volume. A comprehensive online sales interface was launched in November 2020 for further enhancing the supplier and product ranges, the customers' shopping experience can be further persistently enhanced.



主要業務

MAJOR OPERATIONS



市場推廣服務

Marketing & Promotion Service

「卓思」市場推廣服務

"Cheers" Marketing & Promotion Service

為醫療及復康用品供應商及各大藥廠提供市場推廣服務，包括度身訂造市場推廣計劃、宣傳刊物設計、印刷及直接郵寄服務，協辦醫院展銷及舉辦線上線下專題健康教育講座。

To provide promotional services for suppliers of medical and rehab products and pharmaceutical companies, including tailored marketing and promotional programmes, promotional material design, printing and direct mailing services, co-organise bazaar and online and offline health talks.

Cheers
Marketing
co

卓思
市場推廣服務

為藥廠提供「一站式」顧問形式的服務，內容包括：招募會員、舉辦健康講座、運動班、工作坊及安排專職醫務人員為會員教授醫護知識等。

To provide "one-stop" consultancy services for pharmaceutical companies, including membership recruitment, health talks, fitness classes, workshops and arranging specialty staff to share medical knowledge to members.



結直腸癌的治療

李兆康醫生
臨床腫瘤科專科醫生



「卓思」市場推廣服務致力提供更「多元化」和「一站式」的支援服務，冀成為各大藥廠和供應商的理想合作伙伴。

"Cheers" Marketing & Promotion Service committed to provide more "diversified" and "one-stop" services, seamlessly partnering with pharmaceutical companies and suppliers.



傳單服務 Handbill Service

提供工作機會予不同能力及需要的殘疾人士，讓他們享有具工作彈性的公開就業機會。除處理工商客戶外，近年因為公司本身的店舖數目發展迅速，所以亦增加了不少內部訂單，人力和需求亦大大增加。

In order to provide job opportunities to disabled people with different caliber and needs, the Company arranges flexible working conditions to them. Except handling customers in the business environment, the requests from internal stakeholders, particularly in terms of manpower and business demand, are also upsurge due to the rapid expansion of the Company business.

傳單  **速遞**
HandbillExpress

主要項目 Key Projects

黃嘉錫律師事務所
Jimmie K.S. Wong & Partners

工聯優惠中心
The Hong Kong Federation of Trade Unions

卓思廊 Cheers Gallery



主要業務

MAJOR OPERATIONS



期刊出版

Publications

《復康速遞》雙月刊

Rehab Express Magazine (Bi-monthly)

全港首創的復康專題雜誌
Hong Kong's first rehabilitation magazine

網上瀏覽內容 Online content
www.rehabexpress.com.hk

每期出版2萬冊，派送到全港超過2,200個地點，當中包括40間公營醫院、超過200多間診所、化驗所、社福機構、老人院及地區組織等。
20,000 copies were distributed to more than 2,200 locations in Hong Kong, including 40 public hospitals, more than 200 clinics, laboratories, social welfare organizations, elderly homes and district bodies.



與讀者分享更多有關復康護理的知識和技巧，再配合復康用品的使用資訊，加強病友及照顧者對復健的信心，促進病友康復。

To share more knowledge and know-how in relation to rehab care with readers and further relay rehab product information for strengthening the confidence of patients and caregivers in the course of rehabilitation and promote the patient recovery process.





每期為病人自助組織或社福機構免費提供篇幅介紹罕見遺傳病或機構活動，免費篇幅的頁數更由每期4頁增加至6頁。與讀者分享新研發的復康產品和最新的復康資訊，一起走在時代尖端。

To provide free pages for patients' self-help organizations or social welfare organizations to introduce rare genetic diseases or the institutional activities. The number of free pages increased from 4 pages to 6 pages per issue. The readers can be beneficial with its sharing of the latest developed rehab products and the updated rehab information as well as keeping abreast of edge of the rehabilitation.

Rehab Express
復康速遞

Rehab Express 復康速遞



《復康速遞》雙月刊 Rehab Express bi-monthly magazine



向社福機構贊助廣告頁數金額
Advertising sponsorship
HK\$191,000



《復康速遞》惠及讀者人數 (包括網上讀者)
No. of reader (including online reader)
Over 200,000



主要業務

MAJOR OPERATIONS

《醫院管理局員工優惠計劃》 HA Staff Welfare Scheme

為接近80,000名醫管局職員共和20,000名退休員工提供優質的產品和銷售服務，並每兩個月出版《醫院管理局員工優惠計劃》，讓會員能一覽當時得令的貨品及其專屬優惠。

To provide quality products and sales services to nearly 80,000 HA staff and 20,000 retired staff, the bi-monthly magazine allows the readers to view the privileged packages and products at a glance.





《樂協會員優惠計劃》 Cheers Coop Member Bi-monthly Booklet

每兩個月出版《樂協會員優惠計劃》，為會員搜羅節慶貨品及時尚優惠，務求讓會員能一書在手，包攬最強折扣優惠。

The bi-monthly Booklet collects all festive goods and trendy offers and the members can grasp the best discount offers at one hand.



OATLY!

限定優惠

唔限定你買幾多

樂協會員優惠

產品名稱	原價	會員價	小計
1. OATLY 燕麥奶 (1L)	\$12.90	\$10.90	\$10.90
2. OATLY 燕麥奶 (500ml)	\$6.90	\$5.90	\$5.90
3. OATLY 燕麥奶 (250ml)	\$3.90	\$3.40	\$3.40
4. OATLY 燕麥奶 (125ml)	\$1.90	\$1.70	\$1.70
5. OATLY 燕麥奶 (62.5ml)	\$0.90	\$0.85	\$0.85
總計			\$22.75

訂購方法

1. 訂購金額滿 HK\$500

2. 訂購金額不達 HK\$500

香港大正製藥

樂協及悅購精選優惠

肌肉止痛系列

皮膚護理系列

兒童乳貼系列

產品名稱	原價	會員價	小計
1. 肌肉止痛膏 (100g)	\$12.90	\$10.90	\$10.90
2. 肌肉止痛膏 (50g)	\$6.90	\$5.90	\$5.90
3. 肌肉止痛膏 (25g)	\$3.90	\$3.40	\$3.40
4. 肌肉止痛膏 (12.5g)	\$1.90	\$1.70	\$1.70
5. 肌肉止痛膏 (6.25g)	\$0.90	\$0.85	\$0.85
總計			\$22.75

訂購表格

姓名: _____

電話: _____

地址: _____

傳真號碼: _____

聯絡人: _____

主要業務 MAJOR OPERATIONS

餐飲業務 Catering Service

cheers
CAFÉ

cheers CATERING 悅膳



「明途聯繫」於2010年成功於北區醫院開辦第一間Cheers Café，正式涉足餐飲業務。

"MentalCare Connect" opened its first "Cheers Café" at North District Hospital in 2010 and actively involved in the catering business.

及後投得九龍塘教育局教育服務中心平台咖啡閣的營運權，開設第二間 Cheers Café。

The successful mode of operations further replicated to open the second Cheers Café at Kowloon Tong Education Bureau Education Service Centre.

經過多年累積營辦餐飲經驗，相繼於東華三院轄下的黃大仙醫院及廣華醫院經營 Cheers Café，進一步提升「明途聯繫」在餐飲方面的服務水平，惟因市場環境的變化及配合醫院的轉變，黃大仙醫院及廣華醫院的 Cheers Café 已於2019年12月停止營業。

The valuable operational experience accumulated in the past years further encouraged "MentalCare Connect" to develop. The operation of Cheers Café at TWGHs Wong Tai Sin Hospital and Kwong Wah Hospital witnessed the expansion of catering business and rendered diversified training and employment opportunities to disabled person. However, the operation was ceased in December 2019 to cope with the changes of hospitals and market demands.



面對顧客及市場的需求，「明途聯繫」將提供至臻完善的餐飲服務，並努力開拓商機。除保留及整合具價值的專案項目外，亦會積極探討在社區開設新店的可能性，以為殘疾人士創造多元化的訓練及就業機會。

In view of customer and market demands, "MentalCare Connect" will continue providing comprehensive catering service with retaining and consolidating valuable projects and further exploring business opportunities/possibilities in opening street front shop in the community to render diversified training and employment opportunities to disabled person.





清潔業務 Cleansing Service



持續與庇護工場合作，以承接大型清潔場地合約，包括與香港心理衛生會立人坊工場合作承接清潔合約，除了讓更多殘疾人士獲得工作機會外，合作模式亦有利清潔業務平穩發展。

In order to enhance the stable development of cleansing service, we continuously collaborate with MHAHK sheltered workshop to undertake large scale venue cleaning contract. Such collaboration offers employment opportunities to disabled person as well as facilitating the steady operational development.

新清潔合約 New Contract

博愛潮語浸信會
Brotherly Love Swatow Baptist Church

聯訊科技(香港)有限公司
Unicom Technology (HK) Limited



員工參與及成就

EMPLOYEE PARTICIPATIONS & ACHIEVEMENTS

香港社企員工嘉許計劃2019 5/11/2019

「明途聯繫」共有15名員工獲得提名並嘉許，以表揚他們長期服務及優秀的工作表現和肯定其貢獻。

Hong Kong Social Enterprise Employee Recognition Scheme 2019

15 employees of "MentalCare Connect" were nominated and awarded for praising and encouraging their long service and outstanding performance at work.





2019東京國際福祉機器展 25-27/9/2019

鍾偉成先生與高級經理(零售營銷)金保華小姐聯同復康用品銷售及零售部門經理參觀於東京Big Sight舉行的第46屆國際福祉機器展並與當地供應商交流產品的最新發展。

International Home Care & Rehabilitation Exhibition 2019

Mr. Chung Wai Shing, accompanied with Ms. Winnie Kam (Senior Manager of Retail Marketing) and her team visited the 46th International Home Care & Rehabilitation Exhibition held at the Tokyo Big Sight and communicated with the local suppliers for the latest development of rehab products.



員工參與及成就

EMPLOYEE PARTICIPATIONS & ACHIEVEMENTS

泰國社企交流團 9-13/10/2019

高級經理(企業營銷)吳秀雯女士及業務經理蔡曉東先生參加由香港社會企業總會舉辦的泰國社企交流團，到訪當地不同的社企進行交流。

Social Enterprises Exchange Tour to Thailand 2019

Ms. Fanny Ng and Mr. Tony Choy, Senior Manager and Business Manager of Corporate Marketing joined the Social Enterprises Exchange Tour to Thailand organized by the Hong Kong General Chamber of Social Enterprise. They visited and communicated with a number of Thai's social enterprises.





「誠信管理」講座 12/6/2019

「明途聯繫」邀得香港廉政公署舉辦題為「誠信管理」講座。內容包括於提升員工的誠信意識及對反貪法例的了解，並對誠信管理提供實務建議。

Corporate Ethics Seminar

"MentalCare Connect" invited ICAC to organise a seminar relating to Corporate Ethics. It provided integrity training for staff to enhance their ethical awareness and knowledge on anti-corruption laws and introduce the practical guidelines on ethical management.



企業成就

CORPORATE ACHIEVEMENTS



「明途聯繫」旗下社企項目獲頒社企認證 17/9/2019

「明途聯繫」旗下「卓思廊」復康速遞直銷業務及Cheers Cafe獲頒發「創越級」，「樂協」社團優惠坊則獲「創建級」社企認證，盡顯「明途聯繫」在社企界中的營運和規模。

SE Projects under "MentalCare Connect" were awarded SEE Mark

"Rehab Express" Direct Sales Service and Cheers Café under "MentalCare Connect" were awarded with SEE Mark Advanced, whereas Cheers Coop was awarded with Start-Up.



2019十一良心消費運動啟動禮 20/9/2019

豐盛社企學會假香港朗廷酒店舉辦「2019十一良心消費運動啟動禮」，鍾偉成先生代表香港社會企業總會領取協辦機構感謝狀，高級經理吳秀雯代表公司獲頒贈企業伙伴感謝狀。

Tithe Ethical Consumption Kick-off Ceremony 2019

Fullness Social Enterprise Society held "Tithe Ethical Consumption Kick-off Ceremony 2019" at Hong Kong Langham Hotel. Mr. Chung Wai Shing and Ms. Fanny Ng attended the event and received the participation certificates for the Company.



**「明途聯繫」榮獲盧懷海醫生紀念基金「2019卓越大獎」
10/12/2019**

「明途聯繫」榮獲盧懷海醫生紀念基金「2019卓越大獎」，表揚「明途聯繫」於實踐社企營運上的創意和驕人的成績。

"MentalCare Connect" was presented "Award of Excellence" of the Dr. Lo Wai-Hoi Memorial Fund

"MentalCare Connect" was presented "Award of Excellence" of the Dr. Lo Wai-hoi Memorial Fund, for praising its creativity and outstanding achievements in practising the social enterprise operation.



企業成就

CORPORATE ACHIEVEMENTS

第十屆香港傑出企業公民獎頒獎典禮 17/12/2019

第十屆「香港企業公民計劃」香港傑出企業公民獎頒獎典禮假香港會議展覽中心舉行。「明途聯繫」旗下業務獲得是次活動多個獎項。

The 10th Hong Kong Outstanding Corporate Citizenship Awards

The 10th Hong Kong Outstanding Corporate Citizenship Awards Ceremony of the Hong Kong Corporate Citizenship Program was held at the Hong Kong Conference and Exhibition Centre. "MentalCare Connect" diverse business sectors won a number of award in the Contest.

公司業務Company

機構消費計劃

Organizational Consumption Scheme

「卓思廊」復康用品專賣店

"Cheers Gallery" Rehab Shop

「卓思廊」便利店

"Cheers Gallery" Convenience Store

「復康速遞」直銷業務

"Rehab Express" Direct Sales Service

餐飲業務Catering Service

獎項Prize

銀獎Silver Award

銀獎Silver Award

優異獎Merit

優異獎Merit

優異獎Merit





「明途聯繫」獲嘉許為「精神健康友善卓越機構」

《精神健康職場約章》(《約章》) 是一個持續的精神健康推廣和公眾教育計劃，「明途聯繫」於2019年12月獲嘉許為「精神健康友善卓越機構」。

"MentalCare Connect" was awarded as "Mental Health Friendly Supreme Organisation"

"Mental Health Workplace Charter" was launched for enhancing the public understanding of mental health, "MentalCare Connect" was awarded as "Mental Health Friendly Supreme Organisation" in December, 2019.



觀塘區關愛僱主表揚計劃2019 19/1/2019

「明途聯繫」獲頒發「觀塘區關愛僱主表揚計劃2019」金狀，以表揚公司在連續十年聘用殘疾人士工作，及傷健共融上作出努力。

Caring Employer Award, Kwun Tong District 2019

Gold Award of the "Carnival for International Day of Disabled Persons 2019" was presented to "MentalCare Connect" for appreciating its enthusiasm in creating job opportunities to disabled persons and promoting social integration.



交流分享及媒體報導

SHARING & MEDIA COVERAGE

經驗交流 Experience Sharing



香港新一代文化協會「第五屆香港大學生創新及創業大賽」4-5/5/2019

由香港新一代文化協會主辦的「第五屆香港大學生創新及創業大賽」香港科技園舉行初賽及總決賽。鍾偉成先生獲邀為是次比賽的「文創/社企」組別評審。

The 5th Hong Kong University Student Innovation & Entrepreneurship Competition" organized by Hong Kong New Generation Cultural Association Innovation & Entrepreneurship Centre

The 5th Hong Kong University Student Innovation & Entrepreneurship Competition organised by HKNGCA Innovation & Entrepreneurship Centre was held at Hong Kong Science Park. Mr. Chung Wai Shing was invited to be the judging panel of "Creative Industries / Social Enterprise" of the competition and the guest of the Award Ceremony.

「第一屆企業社會責任與可持續發展論壇-四川成都」10/6/2019

鍾偉成先生出席假成都電子科技大學舉行的「第一屆企業社會責任與可持續發展論壇」並擔任主旨演講嘉賓，介紹香港社會企業近年發展及可持續發展的因素。

"First Corporate Social Responsibility and Sustainable Development Forum" at Chengdu, Sichuan

The First Corporate Social Responsibility and Sustainable Development Forum, co-organised by University of Electronic Science and Technology of China (UESTC) and Chengdu Charity Federation, was held at UESTC. Mr. Chung Wai Shing was invited to be the keynote speaker for sharing the development of Hong Kong Social Enterprises in recent years and the factors for their sustainable development.





Governance Challenges in Social Enterprises & Non-Governmental Organisations (NGOs) 講座 4/7/2019

香港特許秘書公會聯同所羅門財經印刷有限公司，舉辦題為「Governance Challenges in Social Enterprises & Non-Governmental Organisations (NGOs)」的講座。鍾偉成先生獲邀為嘉賓講者之一，分享他於業界內面對機構管治的意見和經驗。

Governance Challenges in Social Enterprises & Non-Governmental Organisations (NGOs) Talk

The Hong Kong Institute of Chartered Secretaries organised a networking talk, supported by Solomon Financial Press Limited, titled "Governance Challenges in Social Enterprises & Non-Governmental Organisations (NGOs)" for its members. Mr. Chung Wai Shing was one of the invited Guest of Honour to share his views and experiences in handling governance challenges in the industry.



深圳大學師生參觀「樂協」社團優惠坊 12/7/2019

深圳大學25位師生參觀「樂協」社團優惠坊。在場的師生專注聆聽店員的分享，藉此讓他們加深了解康復者融入社會就業的經歷及社會企業的運作。

Site visit of Lecturers and Students from Shenzhen University in Cheers Co-op

Lecturers and students from Shenzhen University visited Cheers Co-op. They attentively listened to the staff stories in the sharing session. The sharing widened their understanding of the disabled group of persons re-integrating into the labour market and the operation of social enterprise.

交流分享及媒體報導

SHARING & MEDIA COVERAGE



台灣政治大學商學院交流團到訪 29/10/2019

台灣政治大學商學院MBA「華人企業社會責任發展實務」交流團共15位師生到訪，鍾偉成先生分享「明途聯繫」的使命、發展、挑戰和對社會的影響，學生們勇於提問，交流氣氛熱烈。

Visit of Professors and Students from College of Commerce, National Chengchi University

A total of 15 MBA Professors and students from College of Commerce, National Chengchi University, joined the exchange tour of "Chinese Corporate Social Responsibility Development Practice" and visited "MentalCare Connect". Mr. Chung Wai Shing shared the mission and development of the Company as well as the challenges and social impact encountered. The students were enthusiastic in raising questions for exchanging point of views with the host.



聯合國國際學院探訪「明途聯繫」22/1/2020

北京師範大學－香港浸會大學聯合國國際學院社會工作與社會行政學課程主任陳錦棠博士聯同九位學生拜訪「明途聯繫」及參觀「樂協」社團優惠坊(稅務大樓)、「卓思廊」廣華醫院復康生活幹線及「卓思廊」復康生活幹線(窩打老道)，以深入了解社會企業如何營運及達至社會效益。

Visit of Programme Director and Students of United International College (UIC) to MentalCare Connect

Dr. Chan Kam Tong, Programme Director of the Social Work & Social Administration (SWSA) of Beijing Normal University-Hong Kong Baptist University United International College (UIC), together with nine students visited "MentalCare Connect" and visited "Cheers Co-op" (Revenue Tower), "Cheers Gallery" Kwong Wah Hospital Rehab Links and "Cheers Gallery" Rehab Links at Waterloo Road. All these enhanced the visitors to have a better understanding on the shop operation along with elucidating the benefits brought to the disabled persons and the society.



交流分享及媒體報導

SHARING & MEDIA COVERAGE

媒體報道

Media Coverage

鍾偉成先生應商業電台邀請分享「明途聯繫」的發展歷程 24/6/2019

鍾偉成先生聯同「樂協」社團優惠坊店長林月娥女士應香港商業電台節目「大玩派 - 度水不如度橋」邀請分享「明途聯繫」的發展歷程。

Mr. Chung Wai Shing was invited by CRHK for sharing "MentalCare Connect's" business development

Mr. Chung Wai Shing & Ms. Lam Yuet Ngor, the shop supervisor of Cheers Coop, were invited by "The Fun Box" of Commercial Radio Hong Kong for sharing "MentalCare Connect" 's business development.





香港電台第1台「精靈一點」節目訪問 23/9/2019

高級經理(企業營銷)吳秀雯出席香港電台第一台由沈達元、方健儀主持的「精靈一點」直播節目，分享作為一間全方位社企的業務概況、殘疾人士的就業需要、如何在企業使命及自負盈虧中取得平衡。

Interview of Healthoedia on RTHK Radio 1

Ms. Fanny Ng, Senior Manager (Corporate Marketing) attended a live interview of Healthoedia on RTHK Radio 1, which was hosted by Mr. Tat Yuen Shum and Ms. Akina Fong. The interview shared the business profile of a full-scale social enterprise, the employment needs of disabled people and how the business strived for the balance between corporate mission and financial sustainability.



財務回報

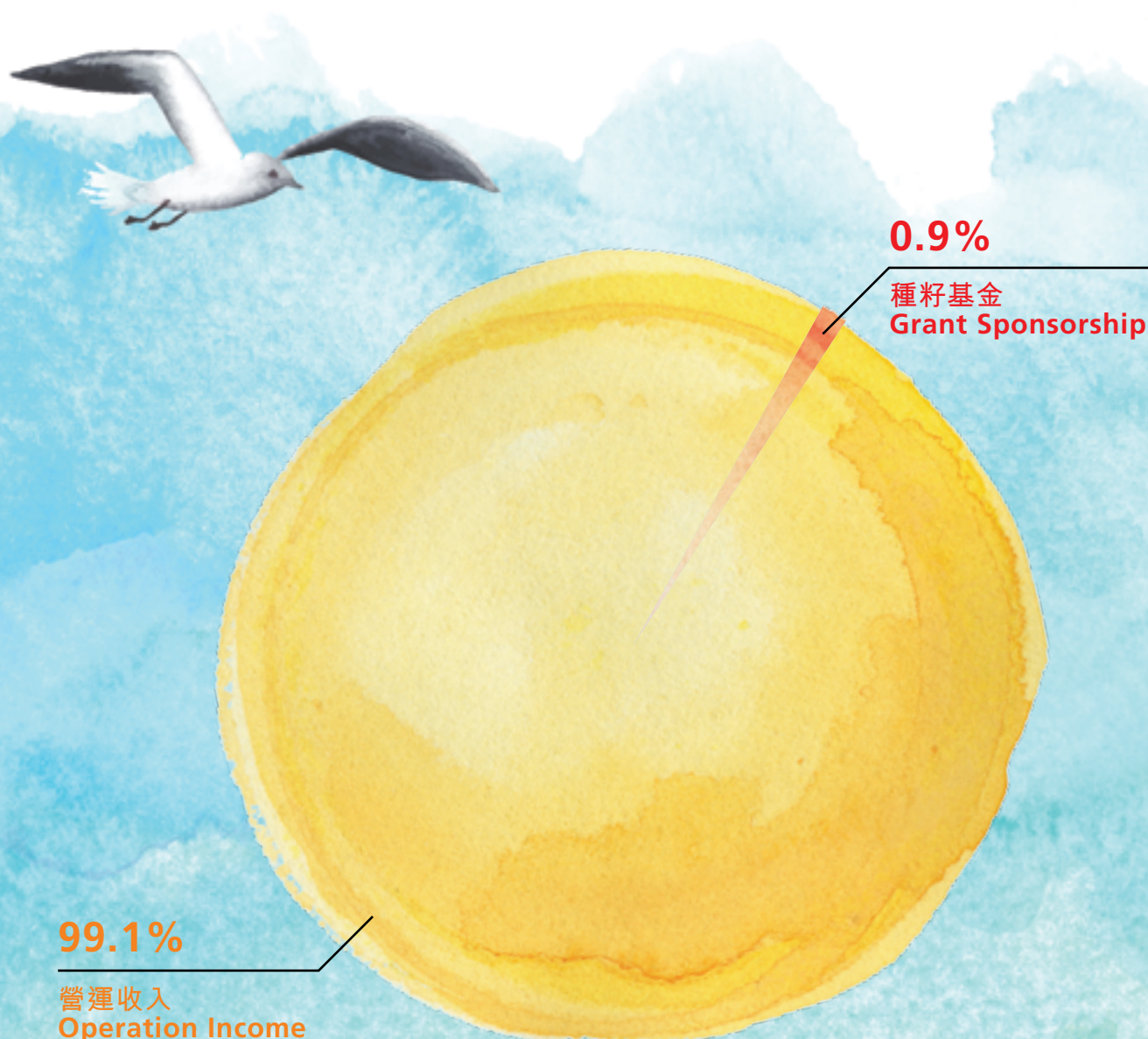
FINANCIAL RETURN 2019-2020

2019-2020年度總收入 Annual Revenue : HK\$168,210,112

種籽基金贊助 Grant Sponsorship : HK\$1,567,093

營運收入 Revenue : HK\$166,403,222

責任採購 Responsible Procurement : HK\$103,020



核數報告

AUDIT REPORT 2019-2020





T N HO SO & LEUNG CPA LIMITED
CERTIFIED PUBLIC ACCOUNTANTS (PROFESSING)
11th, 12th & 13th Floors, 111, 113 & 115 Queen's Road Central, Hong Kong
Tel: (852) 2522 1277 Fax: (852) 2522 1278
Email: info@tnhsolcpa.com.hk

特納何蘇及梁會計師行有限公司
註冊會計師(專業)公司
11樓、12樓及13樓
111、113及115號皇后大道中
電話：(852) 2522 1277
傳真：(852) 2522 1278
電郵：info@tnhsolcpa.com.hk

INDEPENDENT AUDITOR'S REPORT
TO THE MEMBERS OF MENTALCARE CONNECT COMPANY LIMITED
明達聯營有限公司
(Incorporated in Hong Kong with limited liability)

Opinion
We have audited the financial statements of MentalCare Connect Company Limited ("the Company") set out on pages 6 to 15, which comprise the statement of financial position as at 31 March 2020, and the statement of comprehensive income, the statement of cash flows and the statement of changes in equity for the year then ended, and notes to the financial statements, including a summary of significant accounting policies.

In our opinion, the financial statements give a true and fair view of the financial position of the Company as at 31 March 2020, and of its financial performance and its cash flows for the year then ended in accordance with Hong Kong Financial Reporting Standards for Private Entities ("HKFRS for Private Entities") issued by the Hong Kong Institute of Certified Public Accountants ("HKICPA"), and have been properly prepared in compliance with the Hong Kong Companies Ordinance.

Basis for Opinion
We conducted our audit in accordance with Hong Kong Standards on Auditing ("HKSAs") issued by the HKICPA. Our responsibilities under those standards are further described in the Auditor's Responsibilities for the Audit of the Financial Statements section of our report. We are independent of the Company in accordance with the HKICPA's Code of Ethics for Professional Accountants ("the Code"), and we have fulfilled our other ethical responsibilities in accordance with the Code. We believe that the audit evidence we have obtained is sufficient and appropriate to provide a basis for our opinion.

Other Information
The directors are responsible for the other information. The other information obtained at the date of the auditor's report is information included in the report of the directors set out on pages 1 to 5, but does not include the financial statements and our auditor's report thereon.

Our opinion on the financial statements does not cover the other information and we do not express any form of assurance conclusion thereon.

Page 3

T N HO SO & LEUNG CPA LTD.
CERTIFIED PUBLIC ACCOUNTANTS

In connection with our audit of the financial statements, our responsibility is to read the other information and, in doing so, consider whether the other information is materially inconsistent with the financial statements or our knowledge obtained in the audit, or otherwise appears to be materially misstated. If, based on the work we have performed on the other information obtained prior to the date of this auditor's report, we conclude that there is a material misstatement of this other information, we are required to report that fact. We have nothing to report in this regard.

Responsibilities of Directors for the Financial Statements
The directors are responsible for the preparation of the financial statements that give a true and fair view in accordance with HKFRS for Private Entities issued by the HKICPA and the Hong Kong Companies Ordinance, and for such internal control as the directors determine is necessary to enable the preparation of financial statements that are free from material misstatement, whether due to fraud or error.

In preparing the financial statements, the directors are responsible for assessing the Company's ability to continue as a going concern, disclosing, as applicable, matters related to going concern and using the going-concern basis of accounting unless the directors either intend to liquidate the Company or to cease operations, or have no realistic alternative but to do so.

Auditor's Responsibilities for the Audit of the Financial Statements
Our objectives are to obtain reasonable assurance about whether the financial statements as a whole are free from material misstatement, whether due to fraud or error, and to issue an auditor's report that includes our opinion. This report is made solely to you, as a body, in accordance with section 405 of the Hong Kong Companies Ordinance, and for no other purpose. We do not assume responsibility towards or accept liability to any other person for the contents of this report.

Reasonable assurance is a high level of assurance, but is not a guarantee that an audit conducted in accordance with HKSAs will always detect a material misstatement when it exists. Misstatements can arise from fraud or error and are considered material if, individually or in the aggregate, they could reasonably be expected to influence the economic decisions of users taken on the basis of these financial statements.

As part of an audit in accordance with HKSAs, we exercise professional judgment and maintain professional skepticism throughout the audit. We also:

- Identify and assess the risks of material misstatement of the financial statements, whether due to fraud or error, design and perform audit procedures responsive to those risks, and obtain audit evidence that is sufficient and appropriate to provide a basis for our opinion. The risk of not detecting a material misstatement resulting from fraud is higher than for one resulting from error, as fraud may involve collusion, forgery, intentional omissions, misrepresentations, or the override of internal control.
- Obtain an understanding of internal control relevant to the audit in order to design audit procedures that are appropriate in the circumstances, but not for the purpose of expressing an opinion on the effectiveness of the Company's internal control.
- Evaluate the appropriateness of accounting policies used and the reasonableness of accounting estimates and related disclosures made by the directors.

Page 4

T N HO SO & LEUNG CPA LTD.
CERTIFIED PUBLIC ACCOUNTANTS

- Conclude on the appropriateness of the directors' use of the going concern basis of accounting and, based on the audit evidence obtained, whether a material uncertainty exists related to events or conditions that may cast significant doubt on the Company's ability to continue as a going concern. If we conclude that a material uncertainty exists, we are required to draw attention in our auditor's report to the related disclosures in the financial statements or, if such disclosures are inadequate, to modify our opinion. Our conclusions are based on the audit evidence obtained up to the date of our auditor's report. However, future events or conditions may cause the Company to cease to continue as a going concern.
- Evaluate the overall presentation, structure and content of the financial statements, including the disclosures, and whether the financial statements represent the underlying transactions and events in a manner that achieves fair presentation.

We communicate with those charged with governance regarding, among other matters, the planned scope and timing of the audit and significant audit findings, including any significant deficiencies in internal control that we identify during our audit.


T N Ho So & Leung CPA Limited
 Certified Public Accountants (Professing)
 Hong Kong
 Date: 26 OCT 2020
 Practising Director: Kwan Kam Sim
 Practising Certificate No. P00736

Page 5

核數報告

AUDIT REPORT 2019-2020



MENTALCARE CONNECT COMPANY LIMITED 明達聯營有限公司 STATEMENT OF FINANCIAL POSITION AS AT 31 MARCH 2020			
	NOTE	2020 HK\$	2019 HK\$
NON-CURRENT ASSETS			
Plant and equipment	4	2,993,080	2,421,520
CURRENT ASSETS			
Inventories	5	11,319,208	7,791,142
Deposits		826,750	403,170
Payment in advance		123,807	80,458
Trade and other receivables		3,227,750	2,386,681
Cash and bank balances		7,794,869	6,781,621
Current tax refundable	7	4,389	109,396
		23,964,732	17,251,366
CURRENT LIABILITIES			
Accrued expenses		1,445,679	2,718,327
Trade and other payables		16,793,198	12,533,549
Received in advance		3,836,116	892,342
Deferred income	6	391,049	979,973
		21,715,942	16,713,191
NET CURRENT ASSETS		2,248,790	5,538,175
TOTAL ASSETS LESS CURRENT LIABILITIES		4,753,176	3,562,801
NON-CURRENT LIABILITIES			
Deferred income	6	(398,671)	(281,390)
NET ASSETS		4,354,505	3,281,411
Represented by:			
Share capital	8	3,896,880	3,900,000
Share funds		181,888	161,080
Retained profits		1,375,737	149,331
TOTAL FUND AND RESERVES		4,354,505	3,210,411

The accompanying accounting policies and explanatory notes form an integral part of, and should be read in conjunction with, these financial statements.

These financial statements were approved and authorized for issue by the Company's Board of Directors on 28 OCT 2020.

Leo Benjamin
Director

Siu Yiu-ming Andrew
Director

Page 6

MENTALCARE CONNECT COMPANY LIMITED 明達聯營有限公司 STATEMENT OF COMPREHENSIVE INCOME FOR THE YEAR ENDED 31 MARCH 2020			
	NOTE	2020 HK\$	2019 HK\$
INCOME			
Grant income	9	1,887,880	879,129
State income	9	188,453,232	158,337,714
Bursary income		335,737	373,790
Total Income	10	188,216,112	158,286,551
EXPENDITURE			
Cost of sales	11	126,591,394	172,283,871
Staff Cost			
- Salaries, wages and allowances		36,645,346	23,562,234
- Contribution to WPF		1,377,387	1,241,229
Depreciation on plant and equipment	6	1,387,879	1,479,847
Management fee to immediate parent and ultimate controlling party		498,991	460,111
Other operating expenses	13	17,643,093	17,042,295
Total Expenditure		187,673,289	195,602,677
PROFIT BEFORE TAXATION	10	6,542,823	366,874
TAX EXPENSES	12	165,221	23,249
PROFIT AND TOTAL COMPREHENSIVE INCOME FOR THE YEAR		1,883,603	333,111

The accompanying accounting policies and explanatory notes form an integral part of, and should be read in conjunction with, these financial statements.

Page 7

鳴謝

ACKNOWLEDGEMENT

義務法律顧問	Honorary Legal Advisor
周靜嫻律師	Ms. Loretta C. H. Chow
許宗盛太平紳士	Mr Herman Hui, JP
義務商業顧問	Honorary Business Advisors
莫華勳先生	Mr. Peter Mok
紀治興博士太平紳士	Dr. Kee Chi Hing, JP
周允松先生	Mr. Winston Chow
政府部門	Government Departments
社會福利署康復服務市場顧問辦事處	Marketing Consultancy Office (Rehabilitation), Social Welfare Department
社會福利署	Social Welfare Department
民政事務局	Home Affairs Bureau
勞工及福利局	Labour & Welfare Bureau
食物及衛生局	Food and Health Bureau
政府產業署	Government Property Agency
商業夥伴	Business Partners
醫院管理局	Hospital Authority
北區醫院	North District Hospital
博愛醫院	Pok Oi Hospital
律敦治醫院	Ruttonjee Hospital
將軍澳醫院	Tseung Kwan O Hospital
屯門醫院	Tuen Mun Hospital
瑪麗醫院	Queen Mary Hospital
瑪嘉烈醫院	Princess Margaret Hospital
明愛醫院	Caritas Medical Centre
大埔醫院	Tai Po Hospital
東華三院黃大仙醫院	TWGHs Wong Tai Sin Hospital
廣華醫院	Kwong Wah Hospital
威爾斯親王醫院	Prince of Wales Hospital
教育局九龍塘教育服務中心	Education Bureau Kowloon Tong Education Services Centre
康業服務有限公司	Hong Yip Service Company Limited
毅力醫護健康集團	Kinetics Medical & Health Group
星展銀行(香港)有限公司	DBS Bank (Hong Kong) Limited
俊和建築工程有限公司	Chun Wo Construction Holdings Company Limited
恆益物業管理有限公司	Hang Yick Properties Management Limited/
偉邦物業管理有限公司	Well Born Real Estate Management Limited
畢馬威會計師事務所	KPMG
信佳集團管理有限公司	Serco Group (HK) Limited
美麗華集團	Miramar Group
帝盛酒店集團	Dorsett Hospitality
太平洋科技有限公司	ASM Pacific Technology Asia Limited
勞氏清潔服務有限公司	Lo's Cleaning Services Ltd.
香港寬頻有限公司	Hong Kong Broadband Network
至尊迷你倉	One Storage Management Co. Ltd
銀聯集團	BCT Financial Limited Bank Consortium Trust Company Limited
易寶通訊服務有限公司	Epro Telecom Services Limited
博藝體運有限公司	Spotlight Enterprises Limited
濠江電子科技有限公司	EC Fix Technology Limited
NEP Holdings International (HK) Ltd.	NEP Holdings International (HK) Ltd.
林德港氧有限公司	Linde HKO Limited
天一物流集團有限公司	Sky One Logistic Group
香港銅鑼灣皇冠假日酒店	Crowne Plaza Hong Kong Causeway Bay

鳴謝

ACKNOWLEDGEMENT

親子王國	Baby Kingdom
國農證券有限公司	China Demeter Financial Investment Limited
川田集團有限公司	Kawada Holdings Company Limited
震歐線衫廠有限公司	Chun Au Knitting Factory Limited
時代醫療集團	Medtimes Medical Group
ONYX酒店集團	ONYX Hospitality Group
敏哲證券	Mighty Brokerage (Asia) Ltd
羅兵咸永道	PwC HK
香港賽馬會	The Hong Kong Jockey Club
香港工程師學會	Hong Kong Institution of Engineers
香港基督少年軍	The Boys' Brigade Hong Kong
陳校長免費補習天地	Principal Chan Free Tutorial World Limited
香港人壽保險從業員協會	The Life Underwriters Association of Hong Kong
香港聖約翰救護機構	Hong Kong St. John Ambulance
香港退伍軍人聯會	The Hong Kong Ex-Servicemen's Association
香港社會工作者總工會	Hong Kong Social Workers' General Union
伊利沙伯醫院同儕會	QEH Alumni Association
豐盛社企學會有限公司	Fullness Social Enterprises Society
仁安醫院	Union Hospital
誠信綜合治療中心/誠信醫療中心	Alliance Holistic Care Center/ Alliance Medical Center
香港大學傳訊及公共事務處	Communications and Public Affairs Office, The University of Hong Kong
樂沛兒幼稚園	Hong Kong Nobel Preschool
香港社會企業總會	General Chamber of Social Enterprises
聖保祿醫院	St. Paul's Hospital
香港中華基督教青年會	Chinese YMCA of Hong Kong
香港基督教女青年會	Hong Kong Young Women's Christian Association
長者安居協會	Senior Citizen Home Safety Association
義務工作發展局	Agency for Volunteer Service
基督教勵行會 - 培訓服務	Christian Action Training Services
香港基督教服務處	Hong Kong Christian Service
香港失明人協進會	Hong Kong Blind Union
香港職業發展服務處	Hong Kong Employment Development Service Limited
聖雅各福群會	St. James' Settlement
香港心理衛生會	The Mental Health Association of Hong Kong
浸信會愛群社會服務處	Baptist Oi Kwan Social Service
關護長者協會	Community CareAge Foundation
《復康速遞》雜誌名譽顧問 (排名不分先後)	
方玉輝醫生	Dr. Ben Fong
社會醫學專科醫生	Specialist in Community Medicine
何惠娟女士	Ms. Kimmy Ho
香港心理衛生會總幹事	Director, The Mental Health Association of Hong Kong
李俊傑醫生	Dr. Tony Lee
養和醫院家庭醫學專科醫生	Specialist in Family Medicine, Hong Kong Sanatorium & Hospital
吳美君女士	Ms. May Ng
名卓護綜合專科護理及顧問中心顧問護士	Nurse Consultant, Nu Pro Nurse Clinic Centre of Excellence
高永文醫生	Dr. Ko Wing Man
前食物及衛生局局長	Former Secretary for Food and Health Bureau
高淑蘭女士	Dr. Flora Ko
香港醫務行政學會課程總監	Program Director, Hong Kong College of Health Service Executives
孫外主教授	Prof. Sun Waizhu
香港中文大學中醫學院專業顧問	Professional Consultant, School of Chinese Medicine, The Chinese University of Hong Kong
莫恩榮醫生	Dr. Thomas Mok
九龍醫院胸肺內科部門主管	Chief of Service, Respiratory Medical Department, Kowloon Hospital

莫華勳先生 大澳文化基金會有限公司董事	Mr. Peter Mok Director, Tai O Heritage Foundation Limited
許偉智先生 葵涌醫院高級物理治療師	Mr. Simon Hui Senior Physiotherapist, Kwai Chung Hospital
麥基恩醫生 資深精神科醫生	Dr. Mak Ki Yan Specialist in Psychiatry
楊慧珍女士 高級營養師	Ms. Emily Yeung Senior Dietician
葉維國醫生 香港中文大學內科及藥物治療學系心臟專科醫生	Dr. Gabriel Yip Specialist in Cardiology, Dept. of Medicine & Therapeutics, The Chinese University of Hong Kong
黎守信醫生 資深精神科醫生	Dr. Benjamin Lai Specialist in Psychiatry
潘佩璆醫生 資深精神科醫生	Dr. Pan Pey Chyou Specialist in Psychiatry
詹華強教授 香港科技大學中藥研發中心主任	Dr. Karl Tsim Director, Division of Life Science, Center for Chinese Medicine R&D, The Hong Kong University of Science & Technology
劉業添醫生 內分泌及糖尿病專科醫生	Dr. Lau Ip Tim Specialist, Diabetes and Metabolism
盧德臨醫生 資深精神科醫生	Dr. Lo Tak Lam Specialist in Psychiatry
龐曹聖玉女士 香港護理及衛生管理學院院長	Ms. Alice Tso President, The Hong Kong College of Nursing and Health Care Management
鄭國柱醫生 呼吸系統科專科醫生	Dr. Kwong Kwok Chu Specialist, Respiratory Medicine
羅英敏先生 香港理工大學康復治療科學系臨床導師	Mr. Angus Law Clinical Associate (MPT Clinical Coordinator), The Hong Kong Polytechnic University

《復康速遞》雜誌封面故事人物 (排名不分先後)	"Rehab Express" Magazine Cover People (in arbitrary order)
馮素波女士 藝人	Ms. Alice Fung Actress
朱敏健先生 平等機會委員會主席	Mr. Chu Man Kin Chairperson, Equal Opportunities Commission
范瑩孫醫生 香港家庭計劃指導會執行總監	Dr. Fan Yun Sun Executive Director, The Family Planning Association of Hong Kong
傅駿軒醫生 醫院管理局優秀青年獎得獎者	Dr. Fu Chun Him HA Young Achiever Award Awardee
陳浩源先生 十大傑出青年2019	Mr. Chan Ho Yuen The Outstanding Young Persons 2019
歷耆耆	Eldpathy

《復康速遞》雜誌作者 (排名不分先後)	"Rehab Express" Magazine Authors (in arbitrary order)
醫院管理局	Hospital Authority
香港防癌會	The Hong Kong Anti-Cancer Society
聖雅各福群會 社區營養服務及教育中心	Community Nutrition Services & Education Center, St. James' Settlement
香港心理衛生會社區教育部	Division of Community Education, The Mental Health Association of Hong Kong
基督教聯合那打素社康服務	United Christian Nethersole Community Health Service
長者安居協會	The Senior Citizen Home Safety Association
社會創新及創業發展基金	The Social Innovation and Entrepreneurship Development Fund
香港展能藝術會	Arts with the Disabled Association of Hong Kong
蒲蕸園藝治療服務	PUYU Horticultural Therapy Services
香港藥學服務基金	Pharmaceutical Care Foundation
基督教香港信義會社會服務部	Evangelical Lutheran Church Social Service-Hong Kong
縫補寶	Adaptive Clothing
HandyRehab (Zunosaki)	HandyRehab (Zunosaki)
無障礙資訊網	Free Guider

鳴謝

ACKNOWLEDGEMENT

香港藥學服務基金	Pharmaceutical Care Foundation
必靈科技有限公司	BNET-TECH
曾媚小姐 香港心理衛生會教育主任	Ms. Tsang Mei, Echo Social Worker, The Mental Health Association of Hong Kong
李超然先生 香港心理衛生會社工	Mr. Lee Felipe Blandon Social Worker, The Mental Health Association of Hong Kong
區敏怡 香港心理衛生會教育主任	Ms. Au Man I Education Officer, The Mental Health Association of Hong Kong
洪美清小姐 香港心理衛生會李鄭屋宿舍服務經理	Ms. Hung Mei Ching Service Manager, Lei Cheng Uk Estate, The Mental Health Association of Hong Kong
黃韋霖先生 威爾斯親王醫院物理治療師	Mr. Wong Wai Lam Physiotherapist, Prince of Wales Hospital
黃麗詩醫生 內分泌科專科醫生	Dr. Wong Lai Sze Specialists in Endocrinology
張傑醫生 皮膚科專科醫生	Dr. Jacky Chang Specialists in Dermatology
羅兆愉小姐 英國註冊音樂治療師	Ms. Fanny Lo Registered Music Therapist
羅曼詩姑娘 註冊營養師	Ms. Lo Man Sze Registered Dietitian
張杰能醫師 註冊中醫師	Dr. Cheung Kit Nung Registered Chinese Medicine Practitioner
巢朝棟醫師 註冊中醫師	Dr. Chao Chao Dong Registered Chinese Medicine Practitioner
龐沛醫師 註冊中醫師	Dr. Pong Pui Registered Chinese Medicine Practitioner
黃偉文醫師 註冊中醫師	Dr. Wai Wong Man Registered Chinese Medicine Practitioner
凌雅萍醫師 基督教聯合那打素中醫服務暨香港中文大學中醫臨床教研中心註冊中醫師	Dr. Ling Nga Ping Registered Chinese Medicine Practitioner United Christian Nethersole Community Health Service - The Chinese University of Hong Kong Chinese Medicine Clinic cum Training and Research Centre
馬俊豪醫師 香港防癆會－香港大學中醫臨床教研中心中醫師	Dr. Ma Chun Ho Chinese Medicine Practitioner · The Hong Kong Tuberculosis Association - The University of Hong Kong Clinical Centre for Teaching and Research in Chinese Medicine
陳駒醫師 香港防癆會－香港大學中醫臨床教研中心(香港仔)中醫師	Dr. Chan Kui Chinese Medicine Practitioner · The Hong Kong Tuberculosis Association - The University of Hong Kong Clinical Centre for Teaching and Research in Chinese Medicine (Aberdeen)
陳俞霏醫師 香港防癆會－香港大學中醫臨床教研中心(香港仔)中醫師	Dr. Chan Yu Faye Chinese Medicine Practitioner · The Hong Kong Tuberculosis Association - The University of Hong Kong Clinical Centre for Teaching and Research in Chinese Medicine (Aberdeen)
蔡曉欣醫師 香港防癆會－香港大學中醫診所暨研中心(南區)中醫師	Dr. Choi Wing Yan Chinese Medicine Practitioner · The Hong Kong Tuberculosis Association - The University of Hong Kong Chinese Medicine Clinic cum Training and Research Centre (Southern District)
張偉豪先生 香港藥學服務基金到訪藥劑師	Mr. Cheung Wai Ho Visiting Pharmacists, Hong Kong Pharmaceutical Care Foundation
廖家康先生 香港藥學服務基金到訪藥劑師	Mr. Liu Ka Hong Visiting Pharmacists, Hong Kong Pharmaceutical Care Foundation
姚瑞麒先生 香港藥學服務基金到訪藥劑師	Mr. Yiu Sui Ki Visiting Pharmacists, Hong Kong Pharmaceutical Care Foundation

聯絡我們

CONTACT US



總公司

九龍觀塘鴻圖道16號志成工業大廈12樓1206室
電話：2710 8860 傳真：2710 8210

Head Office

Room 1206, 12/F, Houtex Industrial Building, 16 Hung To Road, Kwun Tong, Kowloon
Tel: 2710 8860 Fax: 2710 8210

「卓思廊」便利店/復康店/復康生活幹線

"Cheers Gallery" Convenience Store/Rehab Shop/Rehab Links

「卓思廊」北區醫院24小時便利店

新界粉嶺保健路9號北區醫院地下大堂

電話：2669 7959 傳真：2669 7959

"Cheers Gallery" North District Hospital Convenience Store (24 hrs)

Shop A, G/F Lobby, North District Hospital, 9 Po Kin Road, Fan Ling, N.T.

Tel: 2669 7959 Fax: 2669 7959

「卓思廊」律敦治醫院24小時便利店

香港灣仔皇后大道東266號律敦治醫院地庫3樓

電話：2836 0780 傳真：2836 0780

"Cheers Gallery" Ruttonjee Hospital Convenience Store (24 hrs)

LG3, Ruttonjee Hospital, 266 Queen's Road East, Wan Chai, H.K.

Tel: 2836 0780 Fax: 2836 0780

「卓思廊」威爾斯親王醫院便利店

新界沙田銀城街30-32號威爾斯親王醫院李嘉誠專科診所北翼地下

電話：2645 0333 傳真：2645 0333

"Cheers Gallery" Prince of Wales Hospital Convenience Store

G/F, Li Ka Shing Specialist Clinic (North Wing), Prince of Wales Hospital, 30-32, Ngan Shing Street, Shatin, N.T.

Tel: 2645 0333 Fax: 2645 0333

「卓思廊」大埔醫院便利店

新界大埔全安路9號大埔醫院大堂地下

電話：2607 6540 傳真：2607 6540

"Cheers Gallery" Tai Po Hospital Convenience Store

G012, Main Block, Tai Po Hospital, 9 Chuen On Road, Tai Po, N.T.

Tel: 2607 6540 Fax: 2607 6540

「卓思廊」荔景大樓便利店

新界葵涌荔崗街10號瑪嘉烈醫院荔景大樓地下

電話：2488 3678 傳真：2488 3362

"Cheers Gallery" Lai King Building Convenience Store

G/F, Lai King Building of Princess Margaret Hospital, 10 Lai Kong St, Kwai Chung, N.T.

Tel: 2488 3678 Fax: 2488 3362

「卓思廊」博愛醫院24小時復康店/便利店

新界元朗坳頭博愛醫院中座地下大堂

電話：2470 7065 傳真：2470 7026

"Cheers Gallery" Pok Oi Hospital Rehab Shop/Convenience Store (24 hrs)

G/F Lobby, Central Wing, Pok Oi Hospital, Au Tau, Yuen Long, N.T.

Tel: 2470 7065 Fax: 2470 7026



聯絡我們

CONTACT US

「卓思廊」將軍澳醫院復康用品專賣店

九龍將軍澳坑口寶寧里2號將軍澳醫院1樓

電話：2208 0456

傳真：2209 4764

"Cheers Gallery" Tseung Kwan O Hospital Rehab Shop

1/F, Tseung Kwan O Hospital, 2 Po Ning Lane, Tseung Kwan O, N.T.

Tel: 2208 0456

Fax: 2209 4764

「卓思廊」屯門醫院復康用品專賣店

新界屯門青松觀道屯門醫院主座地下大堂6號舖

電話：2463 1905

傳真：2463 1906

"Cheers Gallery" Tuen Mun Hospital Rehab Shop

Shop 6, G/F Lobby, Tuen Mun Hospital, Tsing Chung Koon Road, Tuen Mun, N.T.

Tel: 2463 1905

Fax: 2463 1906

「卓思廊」瑪麗醫院復康生活幹線

香港薄扶林道102號瑪麗醫院K座地下B舖

電話：2762 2728

傳真：2762 2728

"Cheers Gallery" Queen Mary Hospital Rehab Links

Shop B, G/F, Block K, Queen Mary Hospital, 102 Pokfulam Road, H.K.

Tel: 2762 2728

Fax: 2762 2728

「卓思廊」瑪嘉烈醫院復康生活幹線

九龍荔枝角瑪嘉烈醫院道2-10號主座地下

電話：2488 2123

傳真：2488 2848

"Cheers Gallery" Princess Margaret Hospital Rehab Links

G/F, Main Block, 2-10 Princess Margaret Hospital Road, Lai Chi Kok, Kln.

Tel: 2488 2123

Fax: 2488 2848

「卓思廊」明愛醫院復康生活幹線

九龍深水埗永康街111號明愛醫院懷明三樓

電話：2242 6313

傳真：2242 6312

"Cheers Gallery" Caritas Medical Centre Rehab Links

3/F, Wai Ming Block, Caritas Medical Centre, 111 Wing Hong Street, Kln.

Tel: 2242 6313

Fax: 2242 6312

「卓思廊」廣華醫院復康生活幹線

九龍窩打老道25號廣華醫院地下大堂

電話：2788 1771

傳真：2788 2162

"Cheers Gallery" Kwong Wah Hospital Rehab Links

G/F, Central Stack Main Bldg., Kwong Wah Hospital, 25 Waterloo Road, Kln.

Tel: 2788 1771

Fax: 2788 2162

「卓思廊」復康用品專賣店 (南京街)

九龍佐敦南京街12號地下

電話：3586 1525

傳真：3586 1526

"Cheers Gallery" Rehab Shop @ Nanking Street

LG/F, 12 Nanking Street, Jordan, Kln.

Tel: 3586 1525

Fax: 3586 1526

「卓思廊」復康生活幹線(協和街)

九龍觀塘協和街143號地下

電話：3974 5027

傳真：3974 5097

"Cheers Gallery" Rehab Links @ Hip Wo Street

G/F, 143 Hip Wo Street, Kwun Tong, Kln.

Tel: 3974 5027

Fax: 3974 5097

「卓思廊」復康生活幹線 (窩打老道)

九龍窩打老道31B地舖

電話：3709 8798

傳真：3709 8799

"Cheers Gallery" Rehab Links @ Waterloo Road

G/F, 31B Waterloo Road, Kln.

Tel: 3709 8798

Fax: 3709 8799



「卓思廊」復康生活幹線(街市街)

新界荃灣街市街150號地舖

電話：3111 2386

傳真：3111 2376

"Cheers Gallery" Rehab Links @ Market Street

G/F, 150 Tsuen Wan Market Street, Tsuen Wan, N.T.

Tel: 3111 2386

Fax: 3111 2376

餐飲業務 Catering Service

北區醫院「Cheers Café」

新界粉嶺保健路9號北區醫院地下大堂

電話：2672 9733

傳真：2672 9733

"Cheers Café" North District Hospital

Shop B, G/F Lobby, North District Hospital, 9 Po Kin Road, Fan Ling, N.T.

Tel: 2672 9733

Fax: 2672 9733

教育局教育服務中心「Cheers Café」

九龍塘沙福道19號教育局九龍塘教育服務中心東座平台02室

電話：2794 1101

傳真：2794 1102

"Cheers Café" Education Bureau Education Service Centre

EP02, Education Bureau Kowloon Tong Education Services Centre, 19 Suffolk Road, Kowloon Tong, Kln.

Tel: 2794 1101

Fax: 2794 1102

「復康速遞」直銷業務

"Rehab Express" Direct Sales Service

「復康速遞」訂購

九龍觀塘偉業街181號盈達商業大廈十一樓A室

訂購熱線：8206 6160

訂購傳真：2710 8322

網站訂購：www.rehabexpress.com.hk

"Rehab Express" Ordering

Flat A, 11/F., Yin Da Commercial Building, 181 Wai Yip Street, Kwun Tong, Kln.

Order Hotline: 8206 6160 Order Fax: 2710 8322

Order Online: www.rehabexpress.com.hk

《復康速遞》雜誌

九龍觀塘鴻圖道16號志成工業大廈12樓1206室

電話：2710 8860

傳真：2710 8210

"Rehab Express" Magazine

Room 1206, 12/F, Houtex Industrial Building, 16 Hung To Road, Kwun Tong, Kln.

Tel: 2710 8860

Fax: 2710 8210

機構消費計劃

Organizational Consumption Project

醫院管理局職員合作社

九龍亞皆老街147B醫院管理局大樓207-S室

電話：2300 6981

傳真：2194 6867

Hospital Authority Staff Co-op Shop

Room 207S, Hospital Authority Building, 147B Argyle Street, Kln..

Tel: 2300 6981

Fax: 2194 6867

「樂協」社團優惠坊(銅鑼灣)

香港銅鑼灣軒尼詩道423-425號嘉年華商業大廈2樓

電話：2264 8027

傳真：2264 8029

Cheers Coop (Causeway Bay)

2/F, Ka Nin Wah Commercial Building, 423-425 Hennessy Road, Wan Chai, H.K.

Tel: 2264 8027

Fax: 2264 8029



聯絡我們

CONTACT US

「樂協」社團優惠坊(稅務大樓)

香港灣仔告士打道5號稅務大樓地下2號舖

電話：2157 0051 傳真：2157 1497

Cheers Coop (Revenue Tower)

No. 2 G/F, Revenue Tower, 5 Gloucester Road, Wan Chai, H.K.

Tel: 2157 0051 Fax: 2157 1497

「樂協」社團優惠坊 (灣仔入境大樓)

香港灣仔告士打道7號入境事務大樓地下1號舖

電話：2667 8158

"Cheers Coop Plus" (Immigration Tower)

No. 1, G/F, Immigration Tower, No. 7 Gloucester Road, Wan Chai, H.K.

Tel: 2667 8158

「悅購網」

「悅購網」網上商店：www.cheerspointnet.com.hk

"Cheers Point Net"

"Cheers Point Net" Online Shop：www.cheerspointnet.com.hk

社企淘SE Mail：www.SEmail.hk

「卓思」市場推廣服務

九龍觀塘鴻圖道16號志成工業大廈12樓1206室

電話：2710 8860 傳真：2710 8210

"Cheers" Marketing & Promotion Service

Room 1206, 12/F., Houtex Industrial Building, 16 Hung To Road, Kwun Tong, Kln.

Tel: 2710 8860 Fax: 2710 8210

傳單速遞

九龍觀塘鴻圖道16號志成工業大廈12樓1206室

電話：2710 8860 傳真：2710 8210

Handbill Service

Room 1206, 12/F., Houtex Industrial Building, 16 Hung To Road, Kwun Tong, Kln.

Tel: 2710 8860 Fax: 2710 8210

清潔業務

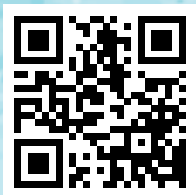
九龍觀塘鴻圖道16號志成工業大廈12樓1206室

電話：2710 8860 傳真：2710 8210

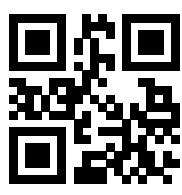
Cleaning Service

Room 1206, 12/F., Houtex Industrial Building, 16 Hung To Road, Kwun Tong, Kowloon

Tel: 2710 8860 Fax: 2710 8210



明途聯繫有限公司
www.mentalcare.com.hk



香港心理衛生會
www.mhahk.org.hk

